

NORA[®]
L I G H T I N G

LED RECESSED
PRODUCT OVERVIEW

Large enough to do it right, small enough to care.

At Nora Lighting, a family owned and operated business, our clients are at the heart of everything we do. We take their goals seriously, and see their success as our own.

Since 1989, our commitment to our clients, and our desire to strive for excellence have been the base of Nora's culture. We support and champion the technological development of luminaires that meet or exceed the highest international standards of design, craftsmanship, quality, performance, and energy efficiency. We strive to exceed our customer's expectations with products utilizing the latest in lighting technology and exceptional customer service. We pursue these goals with ethical, sound and honest business practices.

Over the past 30 years, Nora Lighting has worked diligently to live up to these goals while offering a product line that continues to set benchmarks for innovation, quality, and performance. Our vast array of LED products presented in this LED catalog are a testament to this. Since the development of our first LED downlight in 2011, our team of engineers have continued to produce LED luminaires that achieve new milestones in energy efficiency, lighting quality and design.

Our full line of LED and non-LED lighting solutions are a reflection of our commitment to our clients. Our extensive product lines, together with our dedicated sales and support teams continue to support the various needs of our valued customers. We hope you are able to find exactly what you are looking for with Nora Lighting, and when you do, the entire Nora family will be ready to meet your needs.

THE MOST COMPLETE LINE OF LED DOWNLIGHTS

SAPPHIRE SERIES

Architectural and Commercial LED Downlights

Apertures: 4", 6" and 8"
Lumen Output: 850lm to 8000lm
Dedicated or Retrofit: Dedicated and 6" or 8" Retrofit

A high efficiency commercial series available with two different LED packages (Cree TrueWhite® or Cree COB) Sizes includes 4", 6" & 8" apertures up to 8000 lumen packages in 2700K, 3000K, 3500K, 4000K or Comfort Dim technology. Featuring deep cone open reflectors, adjustable, wall wash or decorative glasses reflectors. Frame-in options include universal architectural/commercial, remodel or retrofit existing frame-ins.



iPOINT SERIES

LED Monopoint

Apertures: 1" and 2"
Lumen Output: 750lm to 1200lm
Dedicated or Retrofit: Dedicated

iPOINT Monopoint Series utilizes Iolite housings to create a small sleek package producing up to 1200 lumens in 2700K, 3000K or 4000K. Compatible with 1" and 2" Iolite housings and incorporates COB LED technology.



QUARTZ SERIES

Tunable White and Tunable Wattage LED Downlights

Apertures: 4", 6" and 8"
Lumen Output: 500lm to 2900lm
Dedicated or Retrofit: Retrofit

Quartz Series is an architectural and commercial grade LED high lumen downlight. Each luminaire includes two tunable switches; Tunable Wattage allows the end user to determine the lumen output & Tunable White allows for selectable kelvin temperature. Producing up to 2900lm in 3000K, 3500K or 4000K in 4", 6" or 8" apertures. Snap-in reflectors allow for in-field adjustment and customization. Easily upgrade old commercial and architectural fixtures to LED technology with Quartz's pre-wired junction box.



PEARL SERIES

Specification Grade LED Downlights

Aperture: 4"
Lumen Output: 1000lm
Dedicated or Retrofit: Retrofit

4" Specification LED downlights are a quality solution for easy retrofitting in residential and light commercial applications. Featuring Cree® COB technology with field adjustable beam spreads and a variety of square and round reflectors. Pearl Series produces up to 1000 lumens in 2700K, 3000K, 3500K, 4000K or Comfort Dim technology. Integral dimmable driver controls the luminaire with Triac or ELV protocols.

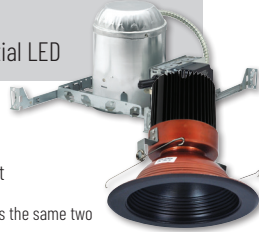


MARQUISE SERIES

IC Rated Commercial & High-End Residential LED

Apertures: 4", 5" and 6"
Lumen Output: 850lm to 2500lm
Dedicated or Retrofit: Dedicated and 5" or 6" Retrofit

Commercial and high-end residential ICAT series that utilizes the same two LED packages as the Sapphire Series. Available in 4", 5" & 6" apertures up to 2500 lumen packages in 2700K, 3000K, 3500K, 4000K or Comfort Dim technology. Variety of adjustable reflectors, square, slope and baffles. Housings include new construction, remodel, slope or retrofit existing housings.



COBALT SERIES

Commercial and Residential LED Downlights

Apertures: 4", 5" and 6"
Lumen Output: 750lm to 2000lm
Dedicated or Retrofit: Dedicated and Retrofit

Cobalt Series consist of retrofit and dedicated 4", 5" & 6" reflectors providing up to 2000 lumens in 2700K, 3000K, 3500K, 4000K or Comfort Dim technology. Cobalt series features Cree® COB throughout the entire family, for a consistent appearance throughout. Series now includes a shallow 2-5/8" housing, adjustable reflectors, adjustable elbow, high lumen and variety of retrofit reflectors.

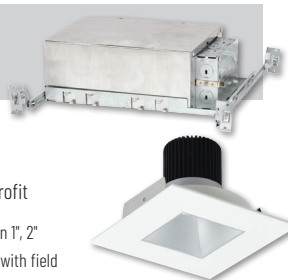


IOLITE SERIES

Small Aperture LED Downlighting

Apertures: 1", 2" and 4"
Lumen Output: 600lm to 2500lm
Dedicated or Retrofit: Dedicated and 4" Retrofit

Small aperture specification downlights available in 1", 2" and 4" apertures. Featuring Cree® COB technology with field adjustable beam spreads and a variety of square and round reflectors. Iolite Series produces up to 2500 lumens in 2700K, 3000K, 3500K, 4000K, 5000K or Comfort Dim technology. Also 2" and 4" apertures are available in trimless, for a clean knife edge look. Housings include new construction, remodel or retrofit existing housings.



ONYX SERIES

Light Commercial and Residential LED Downlights

Apertures: 4", 5"/6" and 6"
Lumen Output: 650lm to 1200lm
Dedicated or Retrofit: Retrofit

Onyx Series features a variety of LED technology (AC, Tunable White and Standard DC) with an economical quality solution to LED Retrofit downlighting. Deep-set optics produce visual comfort in 4" and 5"/6" apertures. The Onyx produces 90+ CRI for true vibrant color rendition. Producing up to 1200 lumens in 2700K, 3000K, 3500K, 4000K and 5000K. Reflector styles include adjustable, baffle, square and open reflectors that are compatible with Nora's dedicated LED housings to meet energy rebate requirements, as well as Nora's medium base housings and housings by others.



CANLESS RECESSED

M1 SERIES

1" Mini LED Recessed



Aperture: 1"

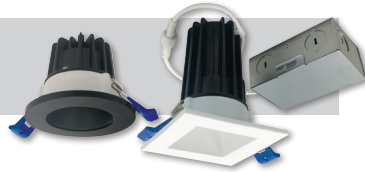
Lumen Output: 100lm

Dedicated or Retrofit: Dedicated

M1 miniature IC rated recessed series features quality and convenience with easy installation for indoor & outdoor applications. Luminaires include four plastic downlight trims, three optics and 6" quick connect. Series is available in four color temperatures (2700K, 3000K, 3500K or 4000K) and requires a 12VDC driver.

M2 SERIES

2" LED Recessed



Aperture: 2"

Lumen Output: 400lm to 850lm

Dedicated or Retrofit: Dedicated

M2 recessed downlights do not require any housings, which makes installation easy. Simply cut the ceiling, wire the junction box and insert the luminaire in the ceiling cavity. IC rated luminaires are available in downlight or adjustable gimbal trims in round or square. Delivering up to 850 lumens in 2700K or 3000K at 90+ CRI. A multiple lighting system can be created with an optional two head or three head regressed trim.

E-SERIES FLIN

Tunable White LED Recessed



Apertures: 4" and 6"

Lumen Output: 600lm or 800lm

Dedicated or Retrofit: Dedicated

E-Series FLIN features Tunable White LEDs, that allow the end user to select the color temperature from 2700K, 3000K or 3500K. Economical IC Air-Tight LED lighting for remodel or new construction applications. FLIN requires less than 2" ceiling clearance and no housing is required! Delivering up to 800 lumens with a 6" or 600 lumens with a 4" luminaire. Luminaires feature a regressed lens and sharp baffle for reduced aperture brightness.

SURFACE MOUNTS

SURF SERIES

LED Surface Mount



Sizes: 4", 6" and 7"

Lumen Output: 650lm to 1000lm

Surface or Retrofit: Surface only

SURF Series is a superior solution for minimalistic surface mounted lighting. The unique light guide and embedded honeycomb lens provides comfortable glare free lighting not found in other surface mounts. Sizes include 4", 6" and 7" in round or square with sharp corners and regressed baffle, the SURF provides an architectural look for general lighting applications. Producing up to 1000 lumens in 2700K, 3000K, 3500K, 4000K or 5000K.

ELO SERIES

Dedicated CCT LED Surface or Recessed Mount



Sizes: 6", 8", 11" and 16"

Lumen Output: 700lm to 2200lm

Surface or Retrofit: Both

ELO Series luminaires are designed to surface mount over a standard or fire rated junction boxes, and is suitable for use with a 5" or 6" recessed housing by Nora or others. Sizes include 6", 8", 11" or 16" round luminaires in 2700K, 3000K, 3500K, 4000K or 5000K. ELO+ fixtures include an integral magnet that allows for an optional finished ring to attach seamlessly.

OPAL SERIES

LED Surface or Recessed Mount



Sizes: 4", 6", 7" and 8"

Lumen Output: 650lm to 2000lm

Surface or Retrofit: Both

Opal Series luminaires are designed to surface mount over a standard or fire rated junction boxes, and is suitable for use with a 5" or 6" recessed housing by Nora or others. The Opal produces even illumination with no diode image, from bright to dim. The low profile unit is cULus wet listed and produces up to 2000 lumens at 90+ CRI. Opal Series is available in 4", 6", 7" with motion sensor or 8" in three finishes and AC without any driver. Opal is an excellent energy efficient lighting solution for laundry rooms, closets, pantries, hallways and showers in residential and commercial retrofit or new construction applications.

Comparison of LED Recessed Series



| | | M1 | M2 | lolite | FLIN | Onyx |
|----------------------|-------------------|----------------------------------|-----------------------------------|--|--------------------------------------|-----------------------------------|
| PERFORMANCE | Aperture | 1" | 2" | 1", 2" and 4" | 4" and 6" | 4", 5" and 6" |
| | Lumens | 100lm | 400lm to 850lm | 600lm to 2500lm | 600lm to 800lm | 650lm to 1200lm |
| | CCT | 2700K, 3000K, 3500K, 4000K | 2700K, 3000K, 3500K, 4000K | 2700K, 3000K, 3500K, 4000K, 5000K, Comfort Dim | Selectable CCT (2700K, 3000K, 3500K) | 2700K, 3000K, 3500K, 4000K, 5000K |
| | Input Voltage | 12V | 120V | 120V/277V | 120V or 120-277V | 120V |
| | Dimming | Specified by driver | Triac or ELV | Triac, ELV, 0-10V, Lutron EcoSystem | Triac or ELV | Triac or ELV |
| APPLICATION | Installation Type | Canless (No Housing) | Canless (No Housing) | New Construction or Remodel | Canless (No Housing) | Retrofit |
| | Rating | IC Rated | IC Air-Tight | IC Air-Tight | IC Air-Tight | Specified by housing |
| | Listing | Wet Location | Damp or Wet | Damp or Wet | Wet | Damp or Wet |
| CUSTOMIZATION | Beam Spread | Field Changeable (Four Included) | Fixed (Elbow includes two optics) | Field Changeable (Three Included) | Fixed | Fixed |
| | Accessory | Trims, Mounting, Cables | Trims, Mounting, Cables | Snoots, Collars, TIR optics, | New Construction Frame, Cables | Reflector Inserts, Oversize Rings |

Comparison of LED Surface Mounts



| | | PERFORMANCE | | | | |
|-------------|---------------------|-----------------|-----------------------------------|------|---------------|---------|
| | | Size | Lumens | CCT | Input Voltage | Dimming |
| Opal | 4", 6", 7" and 8" | 700lm to 2000lm | 2700K, 3000K, 4000K, 5000K | 120V | Triac or ELV | |
| SURF | 4", 6" and 7" | 1000lm | 2700K, 3000K, 3500K, 4000K, 5000K | 120V | Triac or ELV | |
| ELO | 6", 8", 11" and 16" | 700lm to 2200lm | 2700K, 3000K, 3500K, 4000K, 5000K | 120V | Triac or ELV | |



| | | Cobalt | Pearl | Marquise | Quartz | Sapphire |
|----------------------|-------------------|---|---|---|---|---|
| PERFORMANCE | Aperture | 4", 5" and 6" | 4" | 4", 5" and 6" | 4", 6" and 8" | 4", 6" and 8" |
| | Lumens | 750lm to 2000lm | 1000lm | 850lm to 2500lm | 500lm to 2900lm | 600lm to 800lm |
| | CCT | 2700K, 3000K, 3500K, 4000K, Comfort Dim | 2700K, 3000K, 3500K, 4000K, Comfort Dim | 2700K, 3000K, 3500K, 4000K, Comfort Dim | Selectable CCT (2700K, 3000K, 3500K) | 2700K, 3000K, 3500K, 4000K, Comfort Dim |
| | Input Voltage | 120V or 120V/277V | 120V | 120V/277V | 120-277V | New Const. or Remodel |
| | Dimming | Triac, ELV or 0-10V | Triac or ELV | Triac, ELV or 0-10V | 0-10V | Triac, ELV or 0-10V |
| APPLICATION | Installation Type | Retrofit, New Construction or Remodel | Retrofit | New Construction or Remodel | Canless (No Housing) | Frame-In or Remodel |
| | Rating | Specified by housing | Specified by housing | Non-IC or IC | Non-IC | Non-IC |
| | Listing | Damp or Wet | Damp or Wet | Damp or Wet | Wet | Wet |
| CUSTOMIZATION | Beam Spread | Fixed (Adjustable includes two optics) | Field Changeable (Three Included) | Fixed or Specifiable Beam Spread | Fixed | Fixed or Specifiable Beam Spread |
| | Accessory | TIR optics, Decorative Rings | Snoots, Collars, TIR optics, | N/A | Reflector Inserts, New Construction Frame | N/A |



| | APPLICATION | | | CUSTOMIZATION | |
|------|------------------------------------|----------------------|---------|------------------------------------|--------------------------------|
| | Installation Type | Rating | Listing | Features | Accessory |
| Opal | Surface Mount or Retrofit | Suitable for Closets | Wet | Title 24, Regressed, Motion Sensor | Retrofit Kit |
| SURF | Surface Mount | Suitable for Closets | Wet | Regressed Light Guide, Title 24 | N/A |
| ELO | Surface Mount, Retrofit or Pendant | Suitable for Closets | Damp | Decorative Rings, Title 24 | Retrofit Kit, Decorative Rings |



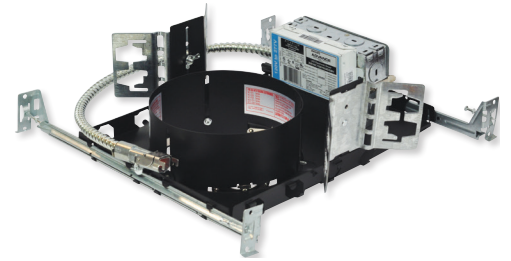
Scan QR code for more information



NC2-431
4" Open Reflector

NC2-638
6" Decorative Glass

NC2-836
8" Wall Wash



NCAH2-630
Architectural / Commercial
New Construction Frame-In



NCHR2-634
Architectural / Commercial
Remodel Frame-In

Adjusts up to 35°



NC2-439
4" Adjustable



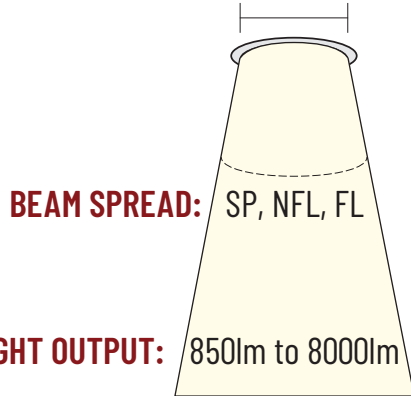
SAPPHIRE I & II

Architectural and Commercial LED Series

A high efficiency commercial series available with two different LED packages (Cree TrueWhite® or Cree COB). Sizes includes 4", 6" & 8" apertures up to 8000 lumen packages in 2700K, 3000K, 3500K, 4000K or Comfort Dim technology. Featuring deep cone open reflectors, adjustable, wall wash or decorative glasses reflectors. Frame-in options include universal architectural/ commercial, remodel or retrofit existing frame-ins.

| | |
|----------------------|--|
| APPLICATION: | Architectural and Commercial |
| INSTALLATION: | New Construction, Remodel, Retrofit |
| APERTURES: | 4", 6" and 8" |
| LUMENS: | 850lm to 8000lm (non-adjustable) 900lm to 3500lm (adjustable) |
| COLOR TEMP.: | 2700K, 3000K, 3500K, 4000K, Comfort Dim |
| DIMMING: | Triac, ELV or 0-10V |
| LISTINGS: | cULus listed for wet locations (adjustable is damp) ENERGY STAR certified |

APERTURE: 4", 6", 8"



BEAM SPREAD: SP, NFL, FL

LIGHT OUTPUT: 850lm to 8000lm

COLOR TEMPERATURE: 2700K 3000K 3500K 4000K COMFORT DIM

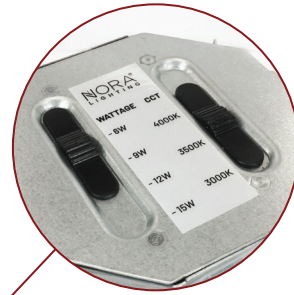




Scan QR code for more information



NQZ-41TWTW-MPW
4" Quartz



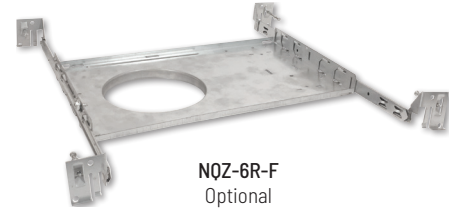
Selectable Lumen Output & Color Temperature



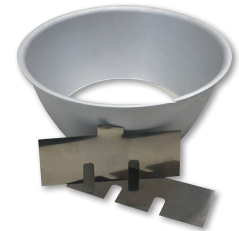
NQZ-81TWTW-MPW
8" Quartz



NQZ-61TWTW-MPW
6" Quartz



NQZ-6R-F
Optional
New Construction Frame-In



NQZ-81REFL
Optional Snap-In Reflector



Shown with
Clear Diffused
Reflector

Shown with
Haze Reflector

Shown with
Specular Clear
Reflector

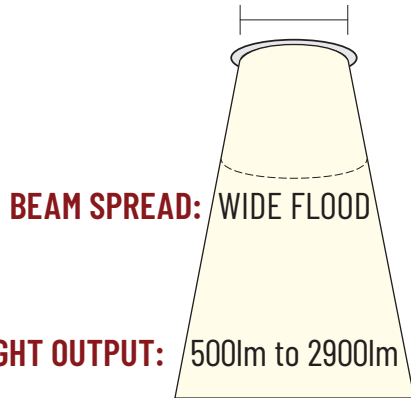
QUARTZ SERIES

LED Tunable White and Tunable Wattage

Quartz Series is an architectural and commercial grade LED high lumen downlight. Each luminaire includes two tunable switches; Tunable Wattage allows the end user to determine the lumen output & Tunable White allows for selectable kelvin temperature. Producing up to 2900lm in 3000K, 3500K or 4000K in 4", 6" or 8" apertures. Snap-in reflectors allow for in-field adjustment and customization. Easily upgrade old commercial and architectural fixtures to LED technology with Quartz's included pre-wired junction box.

| | |
|----------------------|---|
| APPLICATION: | Architectural and Commercial |
| INSTALLATION: | New Construction, Remodel, Retrofit |
| APERTURES: | 4", 6" and 8" |
| LUMENS: | Field Selectable - 4" (1200lm to 500lm), 6" (2100lm to 900lm), 8" (2900lm to 1700lm) |
| COLOR TEMP.: | Field Selectable (3000K, 3500K, 4000K) |
| DIMMING: | 0-10V |
| LISTINGS: | cULus listed for wet locations ENERGY STAR certified |

APERTURE: 4", 6", 8"



COLOR TEMPERATURE: 3000K 3500K 4000K





Scan QR code for more information

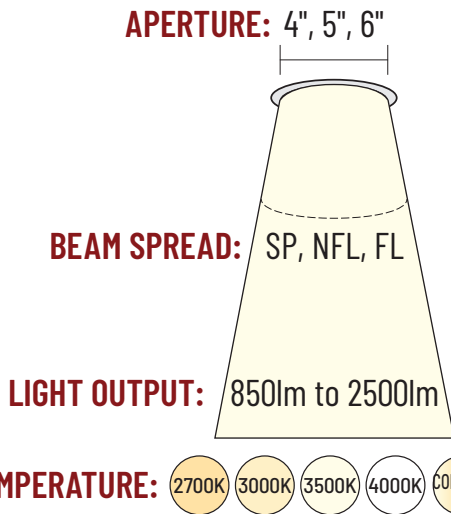


MARQUISE I & II

Architectural and Commercial LED Series

Commercial and high-end residential ICAT series that utilizes the same two LED packages as the Sapphire Series. Available in 4", 5" & 6" apertures up to 2500 lumen packages in 2700K, 3000K, 3500K, 4000K or Comfort Dim technology. Variety of adjustable reflectors, square, slope and baffles. Housings include new construction, remodel, slope or retrofit existing housings.

| | |
|----------------------|---|
| APPLICATION: | Commercial and High-End Residential |
| INSTALLATION: | New Construction, Remodel, Retrofit, Sloped Ceiling |
| APERTURES: | 4", 5" and 6" |
| LUMENS: | 850lm to 2500lm |
| COLOR TEMP.: | 2700K, 3000K, 3500K, 4000K, Comfort Dim |
| DIMMING: | Triac, ELV or 0-10V |
| LISTINGS: | cULus listed for wet locations (adjustable is damp) ENERGY STAR certified Certified to requirements of CA Title 24 JA8-2019 |





Scan QR code for more information



Trimless



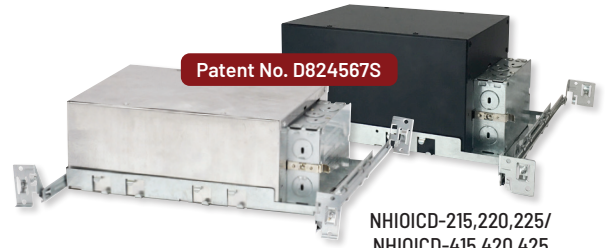
Flush Mount



Flanged



Patent No. D824567S



NHIOICD / NHIOICDP
Iolite New Construction
Housing

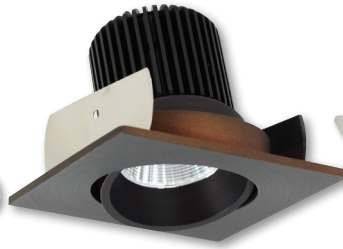
NHIOICD-215,220,225/
NHIOICD-415,420,425
Iolite High Lumen New
Construction Housing



NHRIOIC-48
4" Iolite Remodel Housing



NIO-4RNDC
4" Round Reflector



NIOB-2SC
2" Square Adjustable Cone



NIO-1RNG
1" Round Reflector



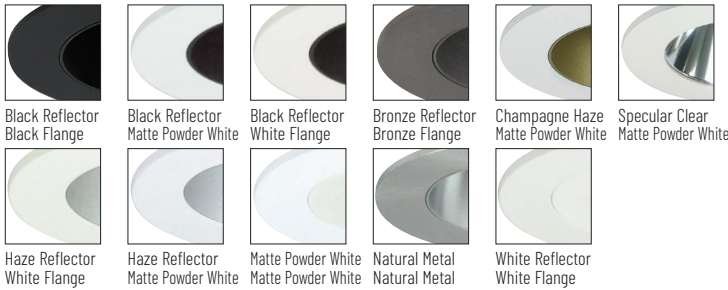
NIOB-1SNB
1" Square Bullnose



NHRIOIC-28
2" Iolite Remodel Housing



NHRIOIC-16
1" Iolite Remodel Housing



| | | | | | |
|---------------------------------|---------------------------------------|--|-----------------------------------|--------------------------------------|--------------------------------------|
| Black Reflector Black Flange | Black Reflector Matte Powder White | Black Reflector White Flange | Bronze Reflector Bronze Flange | Champagne Haze Matte Powder White | Specular Clear Matte Powder White |
| Haze Reflector White Flange | Haze Reflector Matte Powder White | Matte Powder White Matte Powder White | Natural Metal Natural Metal | White Reflector White Flange | |

IOLITE SERIES

Small Aperture LED Specification Downlights

Small aperture specification downlights available in 1", 2" and 4" apertures. Featuring Cree® COB technology with field adjustable beam spreads and a variety of square and round reflectors. Iolite Series produces up to 2500 lumens in 2700K, 3000K, 3500K, 4000K, 5000K or Comfort Dim technology. Also 2" and 4" apertures are available in trimless, for a clean knife edge look. Housings include new construction, remodel or retrofit existing housings.

| | |
|----------------------|---|
| APPLICATION: | Architectural, Commercial and High-End Residential |
| INSTALLATION: | New Construction, Remodel, Retrofit, Trimless |
| APERTURES: | 1", 2" and 4" |
| LUMENS: | 600lm to 2500lm |
| COLOR TEMP.: | 2700K, 3000K, 3500K, 4000K, 5000K, Comfort Dim |
| DIMMING: | Triac, ELV, 0-10V or Lutron EcoSystem |
| LISTINGS: | cULus listed for wet locations (adjustable is damp) ENERGY STAR certified Certified to requirements of CA Title 24 JA8-2019 |

APERTURE: 1", 2", 4"

BEAM SPREAD: SP, NFL, FL

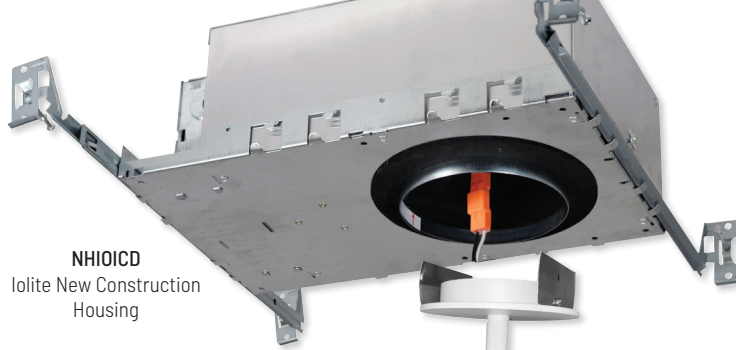
LIGHT OUTPUT: 600lm to 2500lm

COLOR TEMPERATURE: 2700K 3000K 3500K 4000K 5000K COMFORT DIM





Scan QR code for more information

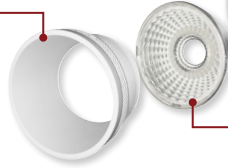


NHIOICD
Iolite New Construction Housing



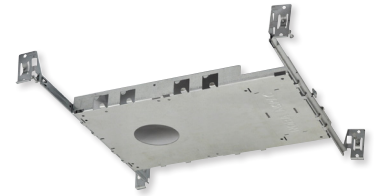
NHRIOIC
Iolite Remodel Housing

Matte powder white fixtures include a black insert



Available in 1" or 2" Cylinder or Cone styles

Each monpoint includes spot, narrow flood and flood optics.



NHIOFK
New Construction Frame-In for Remodel Housings



NIOP-1RTC
1" Cone

NIOP-2RTC
2" Cone

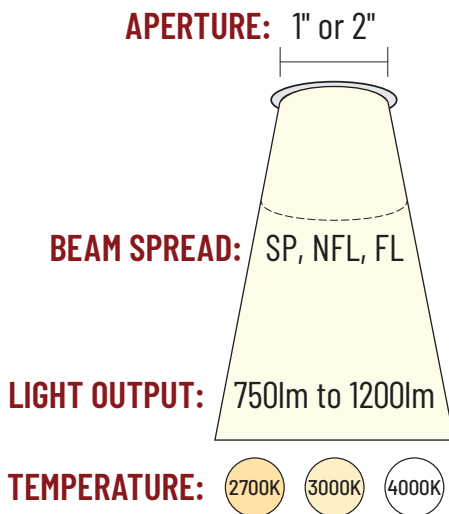
NIOP-1RCY
1" Cylinder

NIOP-2RCY
2" Cylinder

iPOINT SERIES

Adjustable LED Monopoints

iPOINT luminaires maintain a minimal appearance without the need for a 5" canopy. An Iolite recessed housing allows the fixtures to produce up to 1200 lumens in three kelvin temperatures (2700K, 3000K or 4000K). Similar to Iolite reflectors, each iPOINT includes spot, narrow flood and flood optics in Cylinder or Cone styles. Luminaires can be dimmed with Triac, ELV, 0-10V or Lutron Hi-lume EcoSystem.



| | |
|----------------------|---|
| APPLICATION: | Architectural, Commercial and High-End Residential |
| INSTALLATION: | New Construction and Remodel |
| APERTURES: | 1" and 2" |
| LUMENS: | 750lm to 1200lm |
| COLOR TEMP.: | 2700K, 3000K, 4000K |
| DIMMING: | Triac, ELV, 0-10V or Lutron EcoSystem |
| LISTINGS: | cULus listed for damp locations ENERGY STAR certified Certified to requirements of CA Title 24 JA8-2019 |





Scan QR code for more information



Retrofit into existing or new housings



NPR-4SNDSQ
Square Reflector w/
Square Aperture

NPR-4RNDC
Round Reflector

Adjusts up →
↙ to 35°

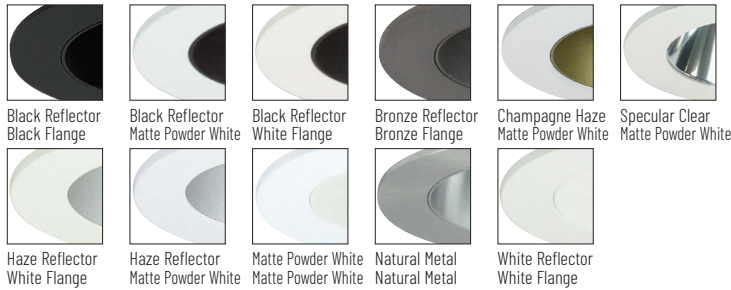


NPR-4SG
Square Adjustable Gimbal

NPR-4RC
Round Adjustable Cone



NPR-4SNDC
Square Reflector w/
Round Aperture

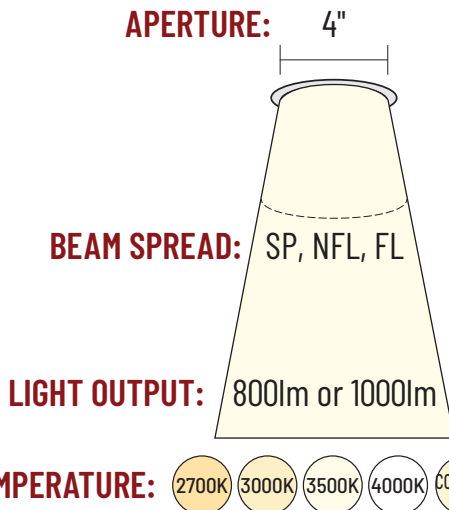


PEARL SERIES

LED Retrofit Downlights

Pearl LED Retrofit luminaires are the high-end, quality solution for easy LED retrofitting in residential and light commercial applications. With a maximum height of just 4-1/2", luminaires can be retrofitted in most 4" IC and non-IC housings—including shallow! Available in a beautiful array of fixed and adjustable styles in ten finishes, each Pearl includes three field changeable optics for maximum design control. Optional accessories can further customize the fixtures.

| | |
|----------------------|---|
| APPLICATION: | Commercial and Residential |
| INSTALLATION: | Retrofit |
| APERTURE: | 4" |
| LUMENS: | 800lm or 1000lm |
| COLOR TEMP.: | 2700K, 3000K, 3500K, 4000K, Comfort Dim |
| DIMMING: | Triac or ELV |
| LISTINGS: | cULus classified for wet locations (adjustable is damp) ENERGY STAR certified Certified to requirements of CA Title 24 JA8-2019 |





Scan QR code for more information



NLCB2-656
6" Square Reflector with Square Aperture



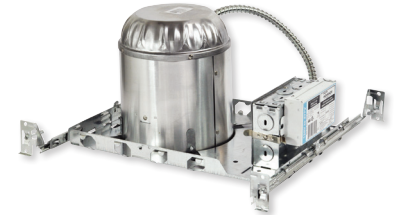
NHICCB-6
IC Air-Tight New Construction



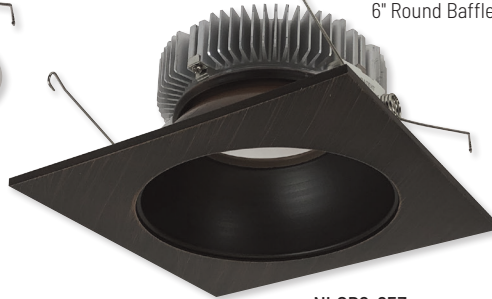
NLCB2-651
6" Round Reflector



NLCB2-652
6" Round Baffle



NHCB-6
Non-IC New Construction



NLCB2-653
6" Square Reflector with Round Aperture



NHRCB-6
Non-IC Remodel

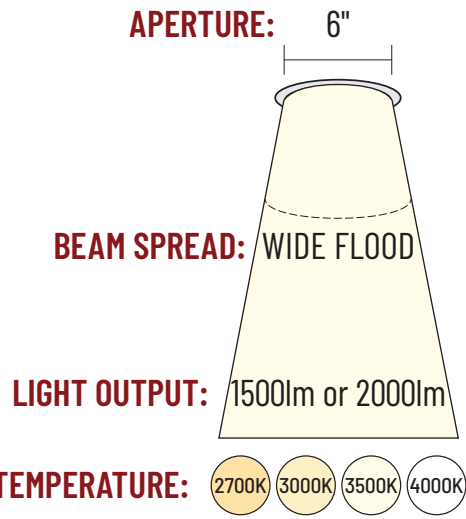


COBALT HIGH LUMEN

Commercial and Residential LED Downlights

Commercial and residential dedicated LED series utilizing the same reflectors and color consistency as the Cobalt Retrofit Series. Delivering 1500 or 2000 lumens in 2700K, 3000K, 3500K or 4000K. Variety of round and square reflectors in ten finishes. Housings include IC Air-Tight new construction, Non-IC or remodel with emergency options.

| | |
|----------------------|--|
| APPLICATION: | Architectural, Commercial and High-End Residential |
| INSTALLATION: | New Construction and Remodel |
| APERTURE: | 6" |
| LUMENS: | 1500lm or 2000lm |
| COLOR TEMP.: | 2700K, 3000K, 3500K, 4000K |
| DIMMING: | Triac, ELV or 0-10V |
| LISTINGS: | cULus listed for wet locations ENERGY STAR certified Certified to requirements of CA Title 24 JA8-2019 |





Scan QR code for more information



NLCBC2-455
4" Square Pinhole



NLCBC2-656
6" Square Reflector with Square Aperture



NLCBC2-451
4" Round Reflector



NLCBC2-552
5" Round Baffle



NLCBC2-553
5" Square Reflector with Round Aperture



Retrofit into existing or new housings



Optional Emergency Wiring & 0-10V dimming!



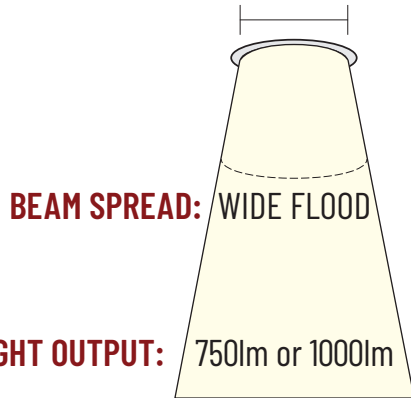
COBALT CLICK

LED Retrofit Downlights

Cobalt Click LED Retrofit reflectors allow the end user over 300 combinations with "Click" feature. Reflectors can easily be changed with a "click" and deliver 750 or 1000 lumens in 2700K, 3000K, 3500K, 4000K or Comfort Dim technology. Luminaires can be retrofitted in most housings—including shallow! Specification grade options include 0-10V dimming, 277V input or Emergency options.

| | |
|----------------------|--|
| APPLICATION: | Light Commercial and Residential |
| INSTALLATION: | Retrofit |
| APERTURES: | 4", 5" and 6" |
| LUMENS: | 750lm or 1000lm |
| COLOR TEMP.: | 2700K, 3000K, 3500K, 4000K, Comfort Dim |
| DIMMING: | Triac, ELV or 0-10V |
| LISTINGS: | cULus classified for wet locations ENERGY STAR certified Certified to requirements of CA Title 24 JA8-2019 |

APERTURE: 4", 5", 6"



LIGHT OUTPUT: 750lm or 1000lm

COLOR TEMPERATURE: 2700K 3000K 3500K 4000K COMFORT DIM





Scan QR code for more information



NHSIC-4 Series
Shallow IC Air-Tight Housing



Patented driver compartment

Compartment easily slides to allow access from below the ceiling



NLCBS-453
4" Square Reflector with Round Aperture

NLCBS-456
4" Square Reflector with Square Aperture



NLCBS-4W52
4" Round Baffle



NLCBS-4W51
4" Round Reflector



Black Reflector
Black Flange

Black Reflector
White Flange

Bronze Reflector
Bronze Flange

Diffused Clear
Matte Powder White

Diffused Clear
White Flange

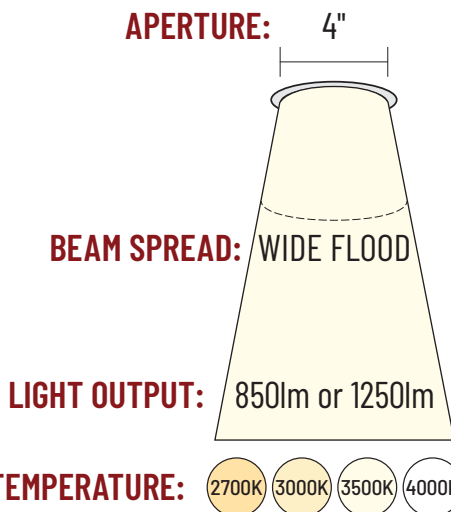
Haze Reflector
Matte Powder White

Haze Reflector
White Flange

Matte Powder White
Matte Powder White

Natural Metal
Natural Metal

White Reflector
White Flange



COBALT SHALLOW

Residential LED Downlights

Commercial and residential dedicated LED series utilizing the same reflectors and color consistency as the Cobalt Retrofit Series. Delivering 1500 or 2000 lumens in 2700K, 3000K, 3500K or 4000K. Variety of round and square reflectors in ten finishes. Housings include IC Air-Tight new construction, Non-IC or remodel with emergency options.

| | |
|----------------------|--|
| APPLICATION: | Architectural, Commercial and High-End Residential |
| INSTALLATION: | New Construction |
| APERTURE: | 4" |
| LUMENS: | 1500lm or 2000lm |
| COLOR TEMP.: | 2700K, 3000K, 3500K, 4000K |
| DIMMING: | Triac, ELV or 0-10V |
| LISTINGS: | cULus listed for wet locations ENERGY STAR certified Certified to requirements of CA Title 24 JA8-2019 |





Scan QR code for more information



Rotates 358°

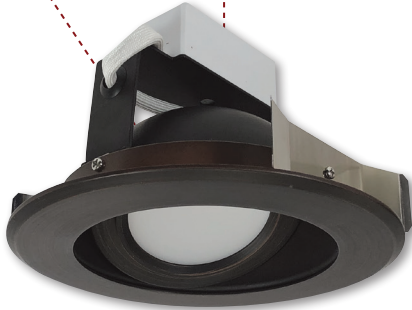


NLCBC-669
6" Adjustable Reflector



Retrofit into existing or new housings

Adjusts up to 30°



NLCBC-569
5" Adjustable Reflector



NLCBC-x69TIR
TIR Optics available



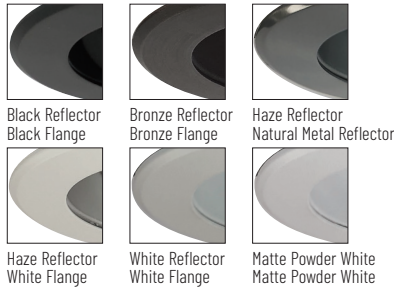
Optional Emergency Wiring & 0-10V dimming!



NLCBC-469
4" Adjustable Reflector

Never break the ceiling plane!

Tilt up to 30° without exposing recessed housing aperture.



COBALT ADJUSTABLE

LED Retrofit Downlights

Cobalt Adjustable LED Retrofit reflectors allow the end user to rotate and aim luminaires in desired direction. Delivering up to 1000 lumens in 2700K, 3000K, 3500K or 4000K. Luminaires can be retrofitted in most housings—including shallow! Specification grade options include 0-10V dimming, 277V input or Emergency options. Premium TIR optics are also available for precise beam control.

| | |
|----------------------|---|
| APPLICATION: | Light Commercial and Residential |
| INSTALLATION: | Retrofit |
| APERTURES: | 4", 5" and 6" |
| LUMENS: | 900lm or 1000lm |
| COLOR TEMP.: | 2700K, 3000K, 3500K, 4000K |
| DIMMING: | Triac, ELV or 0-10V |
| LISTINGS: | cULus classified for damp locations ENERGY STAR certified Certified to requirements of CA Title 24 JA8-2019 |

APERTURE: 4", 5", 6"

BEAM SPREAD: SP, NFL, FL

LIGHT OUTPUT: 900lm or 1000lm

COLOR TEMPERATURE: 2700K 3000K 3500K 4000K





Scan QR code
for more information



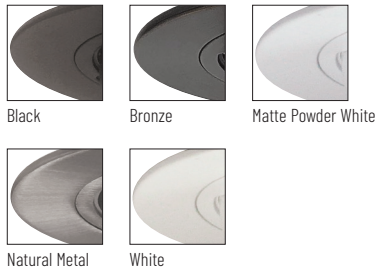
358° Rotation



NLCBC-4870
4\" Square Elbow



NLCBC-470
4\" Round Elbow

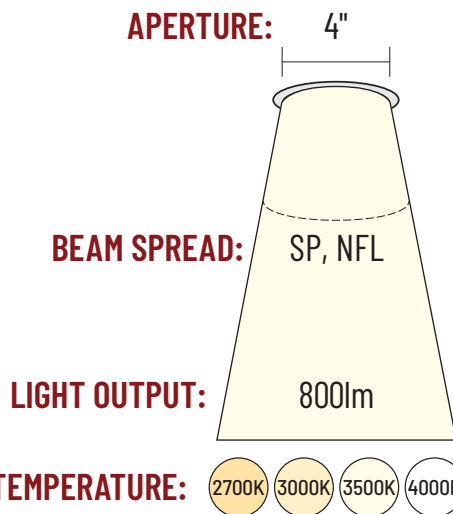


COBALT ELBOW

LED Retrofit Downlights

Cobalt Elbow LED Retrofit luminaires allow the end user to rotate and aim luminaires in desired direction. Delivering over 800 lumens in 2700K, 3000K, 3500K or 4000K. Luminaires include 27° spot and 48° narrow flood optics for precise beam control. Elbow tilts out to 75° and can be rotated up to 358° to aim in almost any direction desired.

| | |
|----------------------|--|
| APPLICATION: | Architectural, Commercial and Residential |
| INSTALLATION: | Retrofit |
| APERTURE: | 4" |
| LUMENS: | 800lm |
| COLOR TEMP.: | 2700K, 3000K, 3500K, 4000K |
| DIMMING: | Triac or ELV |
| LISTINGS: | cULus classified for damp locations Certified to requirements of CA Title 24 JA8-2019 |





Scan QR code for more information



NOX-636
6" Onyx
Square Reflector

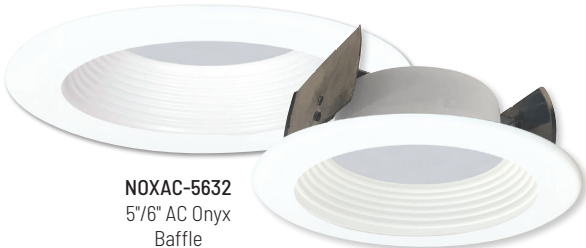


NOX-436
4" Onyx
Square Reflector



Selectable
Color Temperature

NOXTW-5631
5 1/2" Onyx Tunable White
Open Reflector



NOXAC-5632
5 1/2" AC Onyx
Baffle

NOXAC-432
4" AC Onyx
Baffle

NOXTW-431
4" Onyx Tunable White
Open Reflector

NOX-436
4" Onyx
Adjustable



NOX-5636
5 1/2" Onyx
Adjustable



Shown with
Haze Reflector
(AC or TW only)



Shown with
Black Reflector
(AC or TW only)

ONYX SERIES

LED Retrofit Downlights

Onyx LED Retrofits are available in square, adjustable, selectable CCT or AC luminaire without a driver. Tunable White (selectable CCT) allows the end user to select from 5 CCT options, and AC luminaires are dedicated in 2700K, 3000K, 3500K, 4000K or 5000K. 5 1/2" retrofits can be installed in existing 5" or 6" recessed housings. AC and Tunable White Open Reflectors accept baffle and reflector inserts to customize each reflector appearance.

| | |
|----------------------|---|
| APPLICATION: | Light Commercial and Residential |
| INSTALLATION: | Retrofit |
| APERTURES: | 4", 5" and 6" |
| LUMENS: | 650lm to 1200lm |
| COLOR TEMP.: | 2700K, 3000K, 3500K, 4000K, 5000K |
| DIMMING: | Triac or ELV |
| LISTINGS: | cULus classified for wet locations (adjustable is damp) ENERGY STAR certified Certified to requirements of CA Title 24 JA8-2019 |

APERTURE: 4", 5", 6"



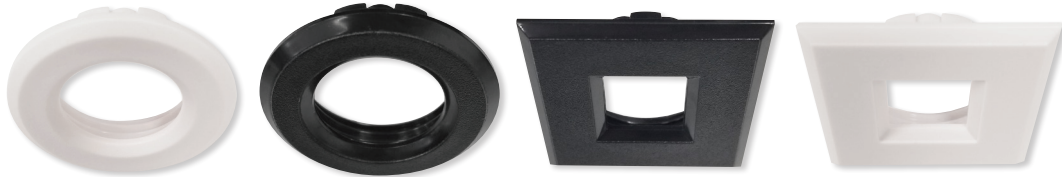
LIGHT OUTPUT: 650lm to 1200lm

COLOR TEMPERATURE: 2700K 3000K 3500K 4000K 5000K

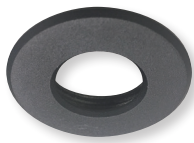




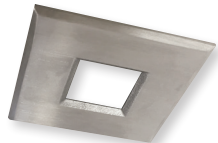
Scan QR code for more information



NMI-170
1" M1 LED Downlight
(includes four plastic trims)



NMI-RSS
Round Stainless Trim



NMI-SSS
Square Stainless Trim



NMI-RSSD
Round Indicator Trim



NMI-RAEYELID
Round Scoop Trim



NMI-RLOUV
Round Louver Trim



NMI-RAIHEC
Round Hexcell Louver Trim



Black



Brushed Nickel



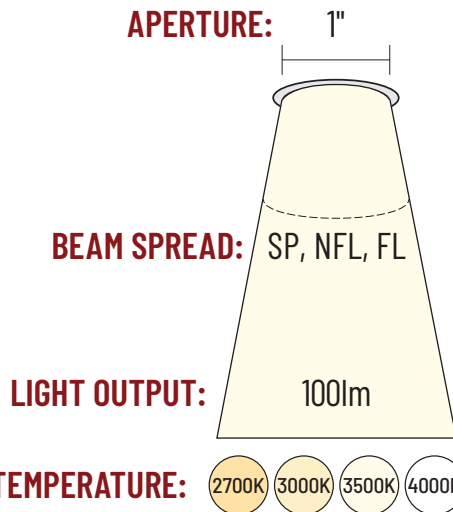
White

M1 SERIES

1" Canless LED Miniature Downlight

M1 miniature recessed series features quality and convenience with easy installation for indoor and outdoor applications. LED luminaires include four plastic downlight trims, four optics and 6" quick connect for 12V driver. Series is available in 2700K, 3000K, 3500K or 4000K. No housing is required and can be installed in insulated ceilings. Field changeable optics and trims allow for each installation to be customized per application.

| | |
|----------------------|--|
| APPLICATION: | Light Commercial and Residential |
| INSTALLATION: | New Construction and Remodel |
| APERTURE: | 1" |
| LUMENS: | 100lm |
| COLOR TEMP.: | 2700K, 3000K, 3500K, 4000K |
| DIMMING: | Triac or ELV (12V Driver required) |
| LISTINGS: | cETLus listed for wet locations (driver is damp) ENERGY STAR certified Certified to requirements of CA Title 24 JA8-2019 |





Scan QR code for more information



NM2-2RDC
2" M2 LED Round Downlight



NM2-2RDCS
2" M2 LED Round Lensed Downlight



NM2-2RG
2" M2 LED Round Gimbal



NM2-2SDC
2" M2 LED Square Downlight



NM2-2SB
2" M2 LED Square Baffle



NM2-2R270
2" M2 LED Round Elbow



Shown with Haze Reflector

Shown with Black Baffle

Shown with Black Wall Wash Trim

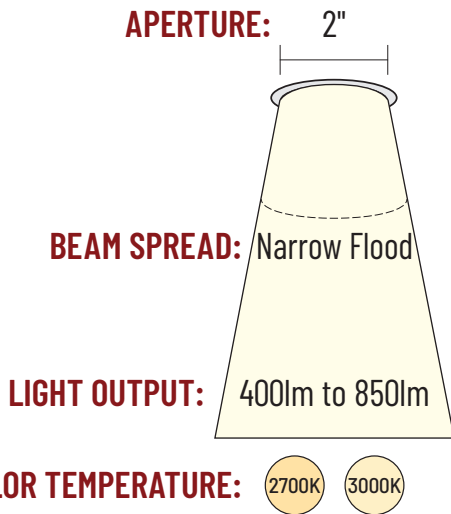
Shown with White Pinhole Trim

M2 SERIES

2" Canless LED Downlights

M2 Series of high quality miniature recessed LED downlights are ideal for remodel or new constructions in residential and light commercial applications. M2 luminaires require no housing, making installation easy. IC Air-Tight rated luminaires are available in round or square apertures in a variety of styles in matte powder white or black finish. A range of accessories allows customization to desired appearance. M2 luminaires deliver up to 850 lumens in 2700K or 3000K at 90+ CRI.

| | |
|----------------------|--|
| APPLICATION: | Light Commercial and Residential |
| INSTALLATION: | New Construction and Remodel |
| APERTURE: | 2" |
| LUMENS: | 400lm to 850lm |
| COLOR TEMP.: | 2700K or 3000K |
| DIMMING: | Triac or ELV |
| LISTINGS: | cETLus listed for damp and wet locations ENERGY STAR certified Certified to requirements of CA Title 24 JA8-2019 |





Scan QR code
for more information



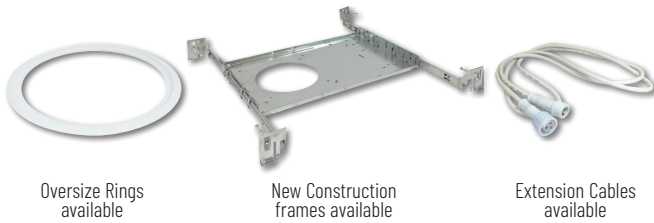
Selectable
Color Temperature



NEFLINTW-R460233MPW
4" E-Series FLIN



NEFLINTW-R680233MPW
6" E-Series FLIN



Oversize Rings
available

New Construction
frames available

Extension Cables
available

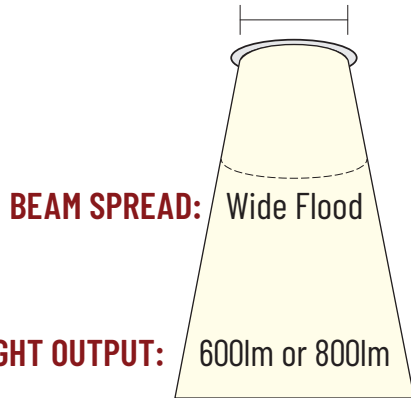
E-SERIES FLIN

Shallow Canless LED Downlights

E-Series FLIN LED downlights are thin at only 1-1/4" tall for remodel or new constructions in residential and light commercial applications. LED luminaires require no housing, making installation easy. IC Air-Tight rated luminaires deliver up to 800 lumens and include a field selectable CCT switch. Color temperature options include 2700K, 3000K or 3500K. Each luminaire includes a pre-wired junction box with dimmable LED driver.

| | |
|----------------------|---|
| APPLICATION: | Light Commercial and Residential |
| INSTALLATION: | New Construction and Remodel |
| APERTURES: | 4" or 6" |
| LUMENS: | 600lm or 800lm |
| COLOR TEMP.: | Field Selectable (2700K, 3000K, 3500K) |
| DIMMING: | Triac or ELV |
| LISTINGS: | cETLus listed for wet locations ENERGY STAR certified Certified to requirements of CA Title 24 JA8-2019 |

APERTURES: 4" or 6"



LIGHT OUTPUT: 600lm or 800lm

COLOR TEMPERATURE: 2700K 3000K 3500K





Scan QR code
for more information



NLOS-R42L
4" Round



NLOS-R72L
7" Round



NLOS-S62L
6" Square



NLOS-S42L
4" Square

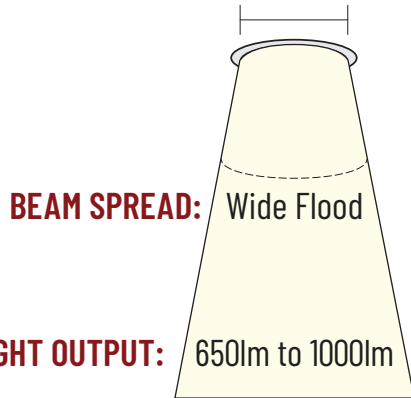
SURF

LED Surface Mounts

SURF LED Edge-Lit surface mount luminaires feature a regressed light guide with embedded honeycomb lens. Light guide provides comfortable glare free lighting not found in other surface mount luminaires to resemble recessed lighting. Luminaires easy mount over a junction box and available in round or square sizes in 2700K, 3000K, 3500K, 4000K or 5000K.

| | |
|----------------------|---|
| APPLICATION: | Light Commercial and Residential |
| INSTALLATION: | New Construction and Remodel |
| APERTURES: | 4", 6" and 7" |
| LUMENS: | 650lm, 900lm or 1000lm |
| COLOR TEMP.: | 2700K, 3000K, 3500K, 4000K, 5000K |
| DIMMING: | Triac or ELV |
| LISTINGS: | cULus listed for wet locations ENERGY STAR certified Certified to requirements of CA Title 24 JA8-2019 Suitable for use in closets |

APERTURES: 4", 6", 7"



LIGHT OUTPUT: 650lm to 1000lm

COLOR TEMPERATURE: 2700K 3000K 3500K 4000K 5000K





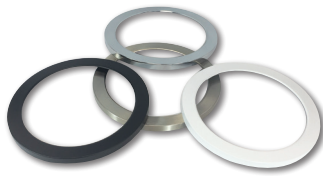
Scan QR code
for more information



NELOCAC-11RP
11" ELO+



NELOCAC-6RP
6" ELO+



Decorative Rings
available



Retrofit Kit
available



NELOCAC-16R
16" ELO



NELOCAC-8RP
8" ELO+

NELOCAC-PK
Pendant Kit

ELO LED Surface Mounts

ELO LED Surface mount luminaires are only 1/2" thick (16" is 1" thick) for a minimalst appearance. Luminaires can be surface mounted over a junction box or retrofit into recessed housings with a retrofit kit. Decorative rings easily change the finish to match any decor or hardware in the vicinity. Four sizes are available in 2700K, 3000K, 3500K, 4000K or 5000K.

| | |
|----------------------|--|
| APPLICATION: | Light Commercial and Residential |
| INSTALLATION: | New Construction and Remodel |
| APERTURES: | 6", 8", 11" and 16" |
| LUMENS: | 700lm, 1100lm, 1700lm or 2200lm |
| COLOR TEMP.: | 2700K, 3000K, 3500K, 4000K, 5000K |
| DIMMING: | Triac or ELV |
| LISTINGS: | cETLus listed for damp locations ENERGY STAR certified Suitable for use in closets |

APERTURES: 6", 8", 11", 16"

BEAM SPREAD: Wide Flood

LIGHT OUTPUT: 700lm to 2200lm

COLOR TEMPERATURE: 2700K 3000K 3500K 4000K 5000K





Scan QR code
for more information



NLOPAC-R8T24
8" T24 Opal



NLOPAC-R6REGT24
6" Regressed Opal



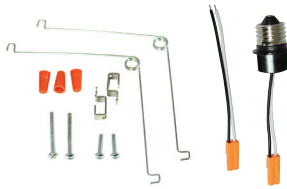
NLOPAC-R6509T24
6" T24 Opal



NLOPAC-R4509T24
4" T24 Opal



NLOPAC-R7MS
7" Opal with Motion Sensor



Retrofit Kit
available

OPAL LED Surface Mounts

Opal LED luminaires are designed to surface mount over a junction box or retrofit over 5" and 6" housings with an accessory. Opal produces an even illumination with no diode image, from bright to dim. The low profile unit is available in four sizes and three types: standard, 6" regressed or 7" motion sensor. Available in three finishes and delivering up to 2000 lumens in 2700K, 3000K, 3500K, 4000K or 5000K.

| | |
|----------------------|---|
| APPLICATION: | Light Commercial and Residential |
| INSTALLATION: | New Construction and Remodel |
| APERTURES: | 4", 6", 7" and 8" |
| LUMENS: | 700lm, 900lm, 1000lm, 1100lm or 2000lm |
| COLOR TEMP.: | 2700K, 3000K, 3500K, 4000K, 5000K |
| DIMMING: | Triac or ELV |
| LISTINGS: | cULus listed for wet locations ENERGY STAR certified Certified to requirements of CA Title 24 JA8-2019 Suitable for use in closets |

APERTURES: 4", 6", 7", 8"

BEAM SPREAD: Wide Flood

LIGHT OUTPUT: 700lm to 2000lm

COLOR TEMPERATURE: 2700K 3000K 3500K 4000K 5000K





NORA LIGHTING, INC.
6505 Gayhart St.
Commerce, CA 90040
TEL 323.767.2600
FAX 323.722.3677
www.NoraLighting.com

DOMESTIC FACILITIES:
Atlanta, GA
Cincinnati, OH
Dallas, TX
Denver, CO
Detroit, MI
Los Angeles, CA
Louisville, KY
Nashville, TN
New York, NY

INTERNATIONAL SALES:
6505 Gayhart St.
Commerce, CA 90040
TEL 323.767.2600
FAX 323.722.3677

The products shown in this catalog are covered by USA and International patents. Specifications subject to change without notice.

© Copyright 2021 Nora Lighting, Inc. All rights reserved

5M ML-RECPROV0121