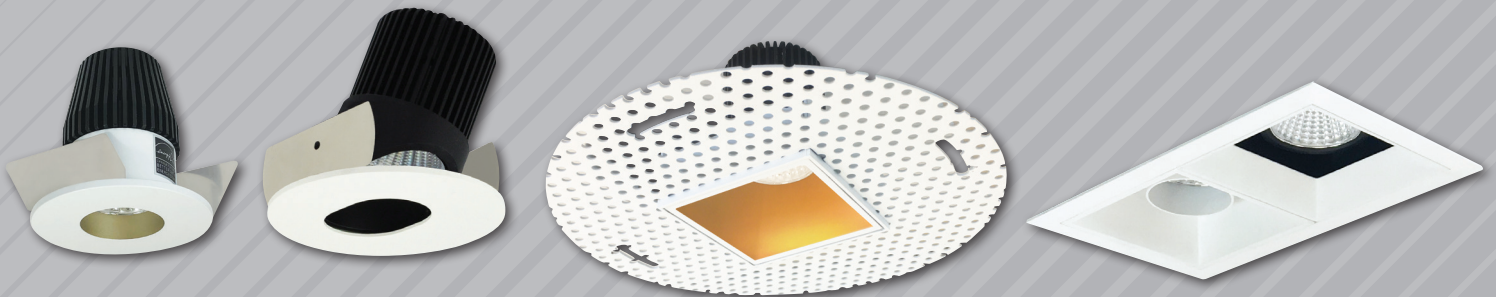


NORA[®]
LIGHTING

IOLITE SERIES
SMALL APERTURE LED DOWNLIGHTING





IOLITE SERIES

SMALL APERTURE DOWNLIGHTING

Iolite Series offers hundreds of design possibilities for any project and specification. Family consists of 1", 2" and 4" die-cast reflectors, that produce up to 2500 lumens in a variety of kelvin temperatures.

Reflector options include round or square apertures, adjustable, multiple finishes, trimless or flush mount. Series' functionality and versatility allows each downlight to meet the design criteria's needs. Each reflector ships with three field changeable optics (spot, narrow flood and flood) to direct the beam of light when needed. 2" and 4" reflectors offer a clean knife edge appearance with trimless mounting or flush mount options.

Entire family is available with dedicated new construction or remodel housings, and 4" series is also available in retrofit for use in existing housings. 1" and 2" remodel housings feature a flat frame option for access to the junction box from below the ceiling.

PERFORMANCE

- 1" reflectors produce up to 600 lumens
- 2" and 4" reflectors produce up to 2500 lumens
- 2700K, 3000K, 3500K, 4000K, 5000K or Comfort Dim technology @ 90+ CRI

VERSATILITY

- Eight different reflector styles
- Round or Square apertures Over ten finishes
- Each reflector includes three optics (spot, narrow flood and flood)
- Variety of decorative collars, snoots and louvers
- Three mounting styles (standard flange, trimless or flush mount)

INNOVATION

Recognizing the challenge of accessing the driver on a unit with a small aperture, Nora designed a dedicated patented housing for the Iolite. The IC air-tight new construction housing contains a sliding mechanism that allows the user to access the driver by pulling on a tab, a patented design allowing for easy maintenance or upgrading for life.



IOLITE DOWNLIGHT SYSTEM



Dedicated IC Air-Tight new construction or remodel housings

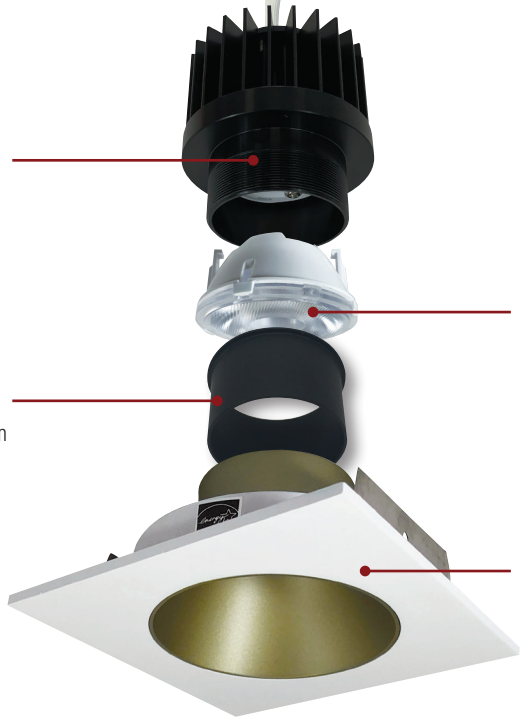
Patented driver assembly. Slide tray allows for tool-less removal of driver.

Die-cast aluminum heat sink with Cree® COB technology

Each module includes spot, narrow flood and flood optics.

Optional accessories can be added anytime between reflector and LED module

Wide variety of reflector styles and finishes



REFLECTOR FINISHES



BB BMPW BW BZ CHMPW CMPW HW HZMPW MPW NN WW

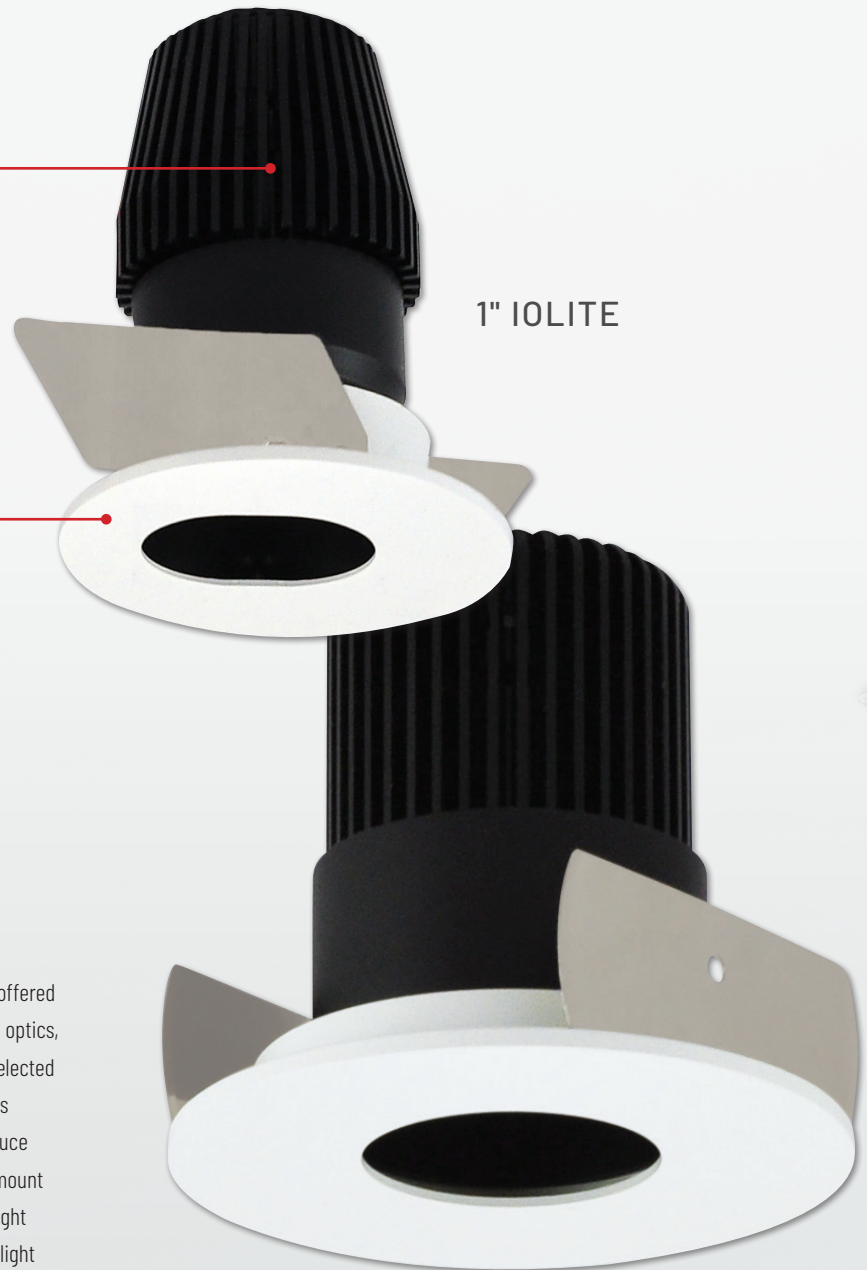
FIXTURES SHOWN ACTUAL SIZE

COB technology module features die-cast aluminum heat dissipating fins. The module's fine threads screw into the die-cast aluminum reflector.

Reflectors are constructed of die-cast aluminum and available in a variety of finishes. The COB optics are deep set for low aperture brightness and each reflector includes three field-changeable optics for spot, narrow flood or flood beam spreads.

DIRECTED LIGHT

The Iolite is designed with dedicated optics offered in flood, narrow flood and spot patterns. The optics, included with each reflector, can easily be selected and installed during final installation, no tools required. The specially designed optics produce more usable light, ultimately reducing the amount of wattage required to light a space or highlight an object. Many other LED downlights waste light production and have to use higher wattage fixtures to produce the same desired effects that the Iolite luminaires produce with less wattage.



1" IOLITE

2" IOLITE

THREE FINISHING OPTIONS



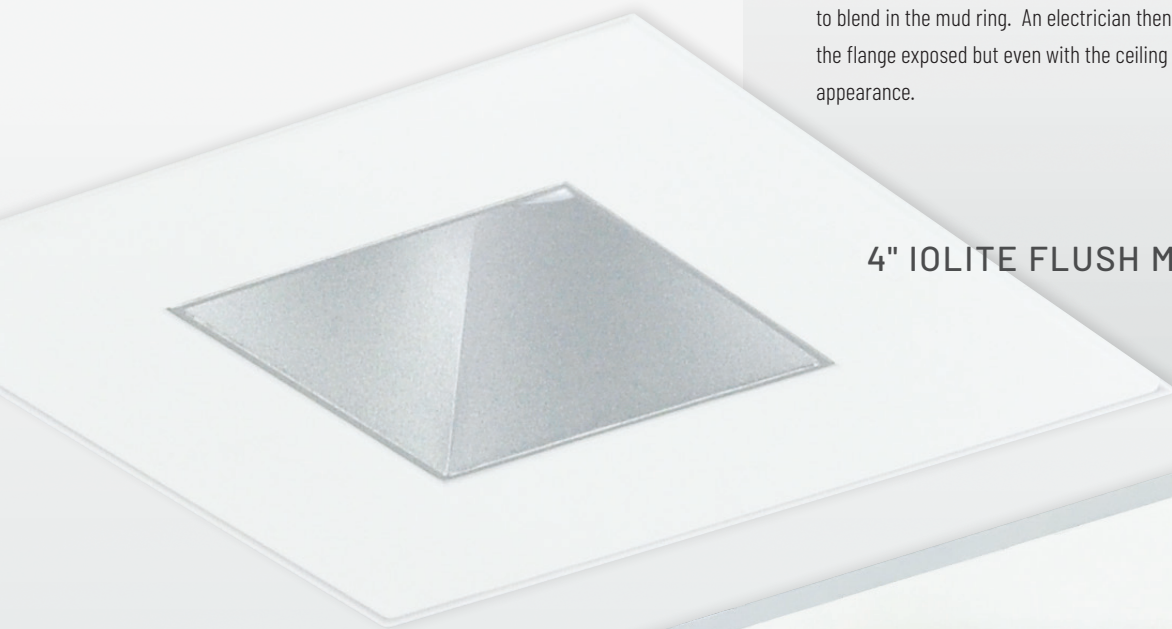
4" IOLITE TRIMLESS

TRIMLESS

Often referred to as flange-less, the Trimless option is considered the premium finishing technique. The trimless effect requires the installation of the trimless mud ring after the drywall is installed. A professional drywall finisher floats the ceiling to blend in the mud ring, sands and paints. The reflector is then inserted into the ring and the result is a spectacular, minimalist appearance with no flange.

FLUSH MOUNT

The Flush Mount option requires the installation of the flush mount mud ring after the drywall is installed. A professional drywall finisher floats the ceiling to blend in the mud ring. An electrician then installs the Iolite reflector with the flange exposed but even with the ceiling plane for a beautiful seamless appearance.



4" IOLITE FLUSH MOUNT

FLANGED

A standard finishing technique, the Flanged option requires the least labor and offers the largest selection of trims. The Iolite flange is extremely thin, extending off the ceiling ever so slightly, approximately 1/16".



4" IOLITE TRIM



3100K

2500K

2000K

LED Dimming Two Choices

WHITE LIGHT DIMMING AND COMFORT DIM

Sapphire, Marquise, Iolite and Cobalt Click Series offer both white light dimming and Comfort Dim technology.

WHITE LIGHT DIMMING (STANDARD)

Consistent color across dimming range keeps colors natural and consistent

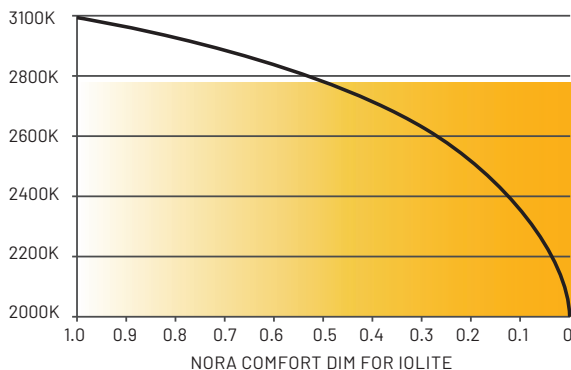
Unlike incandescent dimming, most LED dimming does not change in color as power decreases but remains close to the original kelvin temperature of the source. This is called White Light Dimming. White Light dimming is also found with fluorescent dimming, and has become accepted in most commercial, architectural and residential applications primarily because there were not other energy efficient solutions that would warm the light as it was dimmed.



COMFORT DIM (OPTIONAL)

Warm, rich light dimming creates an intimate atmosphere

An innovation in energy efficient dimming, Comfort Dim presented by Nora, warms the light as power is reduced. Comfort Dim color tunes the temperature from a bright color to a warm and romantic incandescent feel. The Sapphire and Marquise Series goes from 2700K to 1800K, Iolite Series goes from 3100K to 2000K and Cobalt Series goes from 3100K to 1700K. The warm dim Comfort Dim is the perfect solution for restaurants, cineplex, home theaters, multi-purpose event venues and other applications where the temperature and comfort of the light sets the mood.



** Comfort Dim uses premium non-Cree COB. 1" and 2 1/4" Comfort Dim dim on a different curve. Do not put 1" CD and 2 1/4" CD on the same switch leg (dimmer).*

IOLITE SERIES COMMERCIAL AND RESIDENTIAL

1" HOUSINGS 600LM

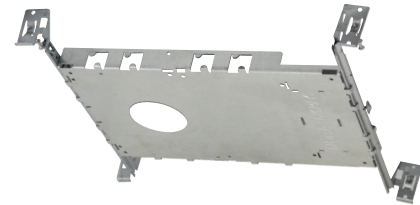
Patent No. D824567S



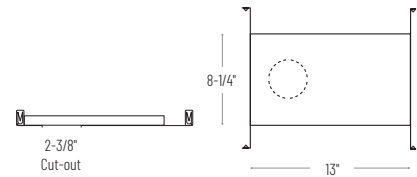
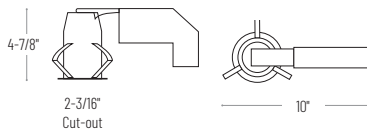
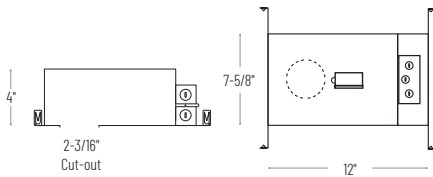
NHIOICD-16 / NHIOICDCP-16
1" Iolite New Construction Housing



NHRIOIC-16
1" Iolite Remodel Housing



NHIOFK-1
1" Iolite Frame-In for Remodel Housing
Allows access to junction box from below the ceiling.



1" IOLITE HOUSING

HOUSING TYPE / WATTAGE	DRIVER / DIMMING	OPTIONAL EMERGENCY WIRING
NHIOICD-16 1" IC Air-Tight New Construction, 600lm / 10W	LE3 120V input; Triac / ELV Dimming LE4 120-277V input; Triac / ELV / 0-10V Dimming LUPEQ 120/277V input; Lutron Hi-lume 0.1% EcoSystem LUPEQ1 120/277V input; Lutron Hi-lume 1% EcoSystem	/PEM Remote Emergency for LE3 and LE4
NHIOICDCP-16 1" Chicago Plenum New Construction, 600lm / 10W	LE3 120V input; Triac / ELV Dimming LE4 120-277V input; Triac / ELV / 0-10V Dimming LUPEQ 120/277V input; Lutron Hi-lume 0.1% EcoSystem LUPEQ1 120/277V input; Lutron Hi-lume 1% EcoSystem	
NHRIOIC-16 1" IC Air-Tight Remodel, 600lm / 10W	LE4 120-277V input; Triac / ELV / 0-10V Dimming	
NHIOFK-1 New Construction Frame-In for 1" Iolite Remodel Housing - Allows access to junction box from below the ceiling		

Example: **NHIOICD-16LE3** - 1" New Construction Housing, 600lm / 10W, 120V input; Triac/ELV dimming

Iolite 1" dedicated LED downlights are available in square and round reflectors. The Iolite modular system allows users to field change both the trim and beam spread without the use of tools. 20°, 40° and 60° optics are included with each module. The 10W Iolite LED module produces 600 lumens at 90+ CRI in various kelvin temperatures.

ELECTRICAL:

Voltage: 120V or 120-277V
Lumens / Wattage: 600lm / 10W
Color Rendering Index: 90+ CRI
Color Temperature: 2700K, 3000K, 3500K, 4000K, 5000K and Comfort Dim (3100K-2000K)
LED: Cree® COB (2700K-5000K), premium non-Cree COB (Comfort Dim)
Dimming: Triac, ELV or 0-10V

COMFORT DIM:

Comfort Dim color tunes the temperature from a bright 3100K, to a romantic and comfortable 2000K on a gradual, even curve.

CONSTRUCTION:

New Construction Housing: Shallow aluminum Air-Tight housing meets air-tight requirements. IC rated for direct contact with thermal insulation. Features patented design with driver mounted to slide out tray. Disconnects are furnished for the line voltage connection as well as the module connection. **Access above ceiling is required.**
Remodel Housing: Steel housing connects to pivoting arm with junction box and driver compartment. IC rated for direct contact with thermal insulation. New construction flat frame available to allow access to junction box from below the ceiling.
Reflector/Module: Die-cast aluminum reflectors are threaded to mount LED module securely and dissipate heat away from light source. Three field-changeable optics are included with each luminaire: spot, narrow flood and flood (installed).

EMERGENCY: New construction housing is wired with connections for emergency battery installation. Requires top access & NEPK-07LEDUNV (Battery with remote test switch)

INSTALLATION:

New Construction: Bar hangers are adjustable from 13-3/4" to 24-1/2" and can be repositioned 90 degrees. Bar hangers are slotted for T-bar installation.
Remodel: Three high-tension tempered steel springs secure remodel housing to ceiling.

ACCESSORIES: Variety of housing and reflector accessories are available on page 23.

LISTING & WARRANTY:

- cULus Listed for Wet Location
- ENERGY STAR certified
- Can be used to comply with 2019 Title 24 - part 6 High Efficacy LED light source requirements
- ROHS compliant
- 5 Year Limited Warranty



COMMERCIAL AND RESIDENTIAL IOLITE SERIES

600LM 1" BWF REFLECTORS

NEW CONSTRUCTION OR REMODEL HOUSING REQUIRED



NIOB-1RNB
1" Round Bullnose
Non-Adjustable
BB, BZ, MPW, NN, WW



NIOB-1SNB
1" Square Bullnose
Non-Adjustable
BB, BZ, MPW, NN, WW



NIOB-1RNG
1" Round Reflector
Non-Adjustable
BB, BW, BZ, CHMPW,
HW, MPW, NN, WW



NIOB-1SNG
1" Square Reflector
Non-Adjustable
BB, BW, BZ, CHMPW,
HW, MPW, NN, WW



NIOB-1RPH
1" Round Pinhole
Non-Adjustable
BB, BMPW, HZMPW, MPW



NIOB-1RSL
1" Round Slot Aperture
30° Adjustable - New Const.
15° Adjustable - Remodel
BB, BMPW, HZMPW, MPW

1" IOLITE BWF REFLECTORS REQUIRES NH10ICD-16 OR NHR10IC-16 HOUSING

SERIES / SHAPE	REFLECTOR TYPE	COLOR TEMP	FINISH	LUMENS / WATTAGE
NIOB-1R 1" Round BWF	NB Bullnose	27X 2700K	BB Black / Black	(blank) 600lm / 10W
NIOB-1S 1" Square BWF	NG Reflector	30X 3000K	BMPW Black / Matte Powder White	
	PH Non-Adj. Pinhole (round only)	35X 3500K	BW Black / White	
	SL Adj. Slot Aperture (round only)	40X 4000K	BZ Bronze / Bronze	
		50X 5000K	CHMPW Champagne Haze / Matte Powder White	
		CDX Comfort Dim*	HW Haze / White	
		<i>* Comfort Dim uses premium non-Cree COB. 1" Iolite uses a different dimming curve than 2" and 4" Comfort Dim.</i>	HZMPW Haze / Matte Powder White	
			MPW Matte Powder White	
			NN Natural Metal	
			WW White / White	
			<i>Not all finishes available on all reflectors</i>	

Example: **NIOB-1RNB27XBZ** - 1" Round BWF Bullnose, 2700K, Bronze Reflector / Bronze Flange



NIOP-1RCY
1" iPOINT Cylinder
BB, MPW

Shown with black insert
(included with MPW)



NIOP-1RTC
1" iPOINT Cone
BB, MPW

The iPOINT series are low voltage monopoints that require a **1" Iolite new construction or remodel housing**. The series is adjustable and replicate an Iolite reflector.

1" iPOINT REQUIRES NH10ICD-16 OR NHR10IC-16 HOUSING

FIXTURE TYPE / LUMENS	COLOR TEMPERATURE / CRI	FINISH
NIOP-1RCY 1" Cylinder - 750lm / 10W	27X 2700K / 90 CRI	BB Black Interior / Black Exterior
NIOP-1RTC 1" Cone - 900lm / 10W	30X 3000K / 90 CRI	MPW Matte Powder White Interior & Exterior
	35X 3500K / 90 CRI	
	40X 4000K / 90 CRI	
	50X 5000K / 90 CRI	

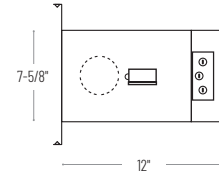
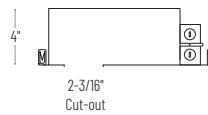
Example: **NIOP-1RCY27XMPW** - 1" iPOINT Cylinder, 2700K / 90 CRI, Matte Powder White Interior / Matte Powder White Exterior, 750lm / 10W

IOLITE SERIES COMMERCIAL AND RESIDENTIAL

1" HOUSINGS 600LM



NHIOICD-16 / NHIOICDCP-16
1" Iolite New Construction Housing



1" IOLITE HOUSING REQUIRES NIO-1 OR NIOB-1 REFLECTOR

HOUSING TYPE / WATTAGE	DRIVER / DIMMING	OPTIONAL EMERGENCY WIRING
NHIOICD-16 1" IC Air-Tight New Construction, 600lm / 10W	LE3 120V input; Triac / ELV Dimming LE4 120-277V input; Triac / ELV / 0-10V Dimming LUPEQ 120/277V input; Lutron Hi-lume 0.1% EcoSystem LUPEQ1 120/277V input; Lutron Hi-lume 1% EcoSystem	/PEM Remote Emergency for LE3 and LE4
NHIOICDCP-16 1" Chicago Plenum New Construction, 600lm / 10W	LE3 120V input; Triac / ELV Dimming LE4 120-277V input; Triac / ELV / 0-10V Dimming <i>Consult factory for Lutron EcoSystem</i>	

Example: **NHIOICD-16LE3** - 1" New Construction Housing, 600lm / 10W, 120V input; Triac/ELV dimming

Iolite 1" dedicated LED downlights are available in square and round reflectors. The Iolite modular system allows users to field change both the trim and beam spread without the use of tools. 20°, 40° and 60° optics are included with each module. The 10W Iolite LED module produces 600 lumens at 90+ CRI in various kelvin temperatures.

ELECTRICAL:

Voltage: 120V or 120-277V

Lumens / Wattage: 600lm / 10W

Color Rendering Index: 90+ CRI

Color Temperature: 2700K, 3000K, 3500K, 4000K, 5000K and Comfort Dim (3100K-2000K)

LED: Cree® COB (2700K-5000K), premium non-Cree COB (Comfort Dim)

Dimming: Triac, ELV or 0-10V

COMFORT DIM:

Comfort Dim color tunes the temperature from a bright 3100K, to a romantic and comfortable 2000K on a gradual, even curve.

CONSTRUCTION:

Housing: Shallow aluminum Air-Tight housing meets air-tight requirements. IC rated for direct contact with thermal insulation. Features patented design with driver mounted to slide out tray. Disconnects are furnished for the line voltage connection as well as the module connection. **Access above ceiling is required.**

Reflector/Module: Die-cast aluminum reflectors are threaded to mount LED module securely and dissipate heat away from light source. Three field-changeable optics are included with each luminaire: spot, narrow flood and flood (installed).

EMERGENCY: New construction housing is wired with connections for emergency battery installation. Requires top access & NEPK-07LEDUNV (Battery with remote test switch)

INSTALLATION:

Bar hangers are adjustable from 13-3/4" to 24-1/2" and can be repositioned 90 degrees. Bar hangers are slotted for T-bar installation.

ACCESSORIES: Variety of housing and reflector accessories are available on page 23.

LISTING & WARRANTY:

- cULus Listed for Wet Location
- ENERGY STAR certified
- Can be used to comply with 2019 Title 24 - part 6 High Efficacy LED light source requirements
- ROHS compliant
- 5 Year Limited Warranty



COMMERCIAL AND RESIDENTIAL IOLITE SERIES

600LM 1" NTF REFLECTORS

NEW CONSTRUCTION HOUSING REQUIRED



NIO-1RNB
1" Round Bullnose
Non-Adjustable
BB, BZ, MPW, NN, WW



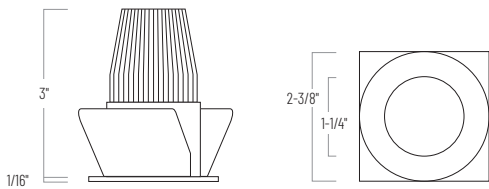
NIO-1SNB
1" Square Bullnose
Non-Adjustable
BZ, MPW, NN, WW



NIO-1RNG
1" Round Reflector
Non-Adjustable
BW, BZ, HW, MPW, NN, WW



NIO-1SNG
1" Square Reflector
Non-Adjustable
BW, BZ, HW, MPW, NN, WW



1" NTF Iolite trims feature an extremely low profile that blends seamlessly with the ceiling. **1" NTF Iolite trims are compatible only with new construction housings.**

1" IOLITE NTF REFLECTORS NON-ADJUSTABLE · REQUIRES NH10ICD-16 HOUSING				
SERIES / SHAPE	REFLECTOR TYPE	COLOR TEMP	FINISH	LUMENS / WATTAGE
NIO-1R 1" Round NTF	NB Bullnose	27X 2700K	BB Black / Black	(blank) 600lm / 10W
NIO-1S 1" Square NTF	NG Reflector	30X 3000K	BW Black / White	
		35X 3500K	BZ Bronze / Bronze	
		40X 4000K	HW Haze / White	
		50X 5000K	MPW Matte Powder White	
		CDX Comfort Dim*	NN Natural Metal	
			WW White / White	
* Comfort Dim uses premium non-Cree COB. 1" Iolite uses a different dimming curve than 2" and 4" Comfort Dim.			Not all finishes available on all trims.	

Example: **NIO-1RNB27XBZ** - 1" Round NTF Bullnose, 2700K, Bronze Reflector / Bronze Flange

ACCESSORIES

Iolite accessories can be added at any point in the design process. Accessories easily install between module and die-cast trim. See page 23 for full details.



Ceiling Extension Collar



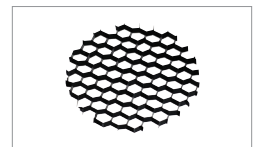
Frosted Filter-Reflector



Translucent Deco Collar



Opaque Collar Snoot



Hex Cell Louver

IOLITE SERIES COMMERCIAL AND RESIDENTIAL

2" HOUSINGS 800LM TO 2500LM

Patent No. D824567S



NHIOICD-28 / NHIOICDCP-28
2" Iolite New Construction Housing



NHRIOIC-28
2" Iolite Remodel Housing

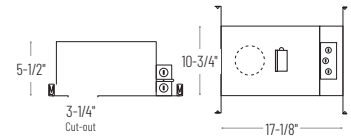
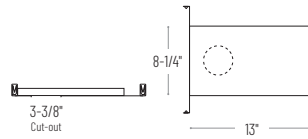
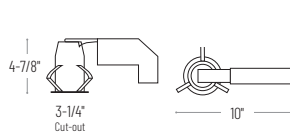
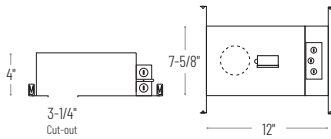
NHIOFK-2

2" Iolite Frame-In for Remodel Housing
Allows access to junction box from below the ceiling.

Patent No. D824567S



NHIOICD-215 / NHIOICD-220 / NHIOICD-225
NHIOICDCP-215 / NHIOICDCP-220 / NHIOICDCP-225
2" Iolite High Lumen
New Construction Housing



2" IOLITE HOUSING

HOUSING TYPE / LUMENS / WATTAGE	DRIVER / DIMMING	OPTIONAL EMERGENCY WIRING
NHIOICD-28 2" IC Air-Tight New Construction, 800-1000lm / 14W NHIOICDCP-28 2" Chicago Plenum New Construction, 800-1000lm / 14W ¹	LE3 120V input; Triac / ELV Dimming LE4 120-277V input; Triac / ELV / 0-10V Dimming LUPEQ 120/277V input; Lutron Hi-lume 0.1% EcoSystem LUPEQ1 120/277V input; Lutron Hi-lume 1% EcoSystem	/PEM Remote Emergency for LE3 and LE4
NHIOICD-215 2" ICAT High Lumen New Construction, 1500lm / 20W NHIOICDCP-215 2" CCEA High Lumen New Construction, 1500lm / 20W ¹	LE4 120-277V input; Triac / ELV / 0-10V Dimming LUPEQ 120/277V input; Lutron Hi-lume 0.1% EcoSystem LUPEQ1 120/277V input; Lutron Hi-lume 1% EcoSystem	/PEM Remote Emergency for LE4
NHIOICD-220 2" ICAT High Lumen New Construction, 2000lm / 24W NHIOICDCP-220 2" CCEA High Lumen New Construction, 2000lm / 24W ¹ NHIOICD-225 2" ICAT High Lumen New Construction, 2500lm / 28W NHIOICDCP-225 2" CCEA High Lumen New Construction, 2500lm / 28W ¹	LE4 120-277V input; Triac / ELV / 0-10V Dimming	
NHRIOIC-28 2" IC Air-Tight Remodel, 800-1000lm / 14W	LE4 120-277V input; Triac / ELV / 0-10V Dimming	
NHIOFK-2 New Construction Frame-In for 2" Iolite Remodel Housing - Allows access to junction box from below the ceiling		

¹ - Chicago Plenum Housings are not compatible with remote emergency

Example: **NHIOICD-28LE3** - 2" New Construction Housing, 800-1000lm / 14W, 120V input; Triac/ELV dimming

Iolite 2" dedicated LED adjustable and non-adjustable downlights are available in square and round designs. The Iolite modular system allows users to field change both the reflector and beam spread without the use of tools. Each module includes spot, narrow flood and an installed flood optics (TIR optics are available).

ELECTRICAL:

Voltage: 120V or 120-277V

Lumens / Wattage: 800 / 14W, 1000lm / 14W, 1500lm / 20W, 2000lm / 24W, 2500lm / 28W

Color Rendering Index: 90+ CRI

Color Temperature: 2700K, 3000K, 3500K, 4000K, 5000K and Comfort Dim (3100K-2000K)

LED: Cree® COB (2700K-5000K), premium non-Cree COB (Comfort Dim)

Dimming: Triac, ELV or 0-10V

COMFORT DIM:

Comfort Dim color tunes the temperature from a bright 3100K, to a romantic and comfortable 2000K on a gradual, even curve. Available in 800lm only.

CONSTRUCTION:

New Construction Housing: Aluminum Air-Tight housing meets air-tight requirements. IC rated for direct contact with thermal insulation. Features patented design with driver mounted to slide out tray. Disconnects are furnished for the line voltage connection as well as the module connection. **Access above ceiling is required.**

Remodel Housing: Steel housing connects to pivoting arm with junction box and driver compartment. IC rated for direct contact with thermal insulation. New construction flat frame available to allow access to junction box from below the ceiling.

Reflector/Module: Die-cast aluminum reflectors are threaded to mount LED module securely and dissipate heat away from light source. Three field-changeable optics are included with each luminaire: spot, narrow flood and flood (installed).

EMERGENCY: New construction housing is wired with connections for emergency battery installation. Requires top access & NEPK-07LEDUNV (Battery with remote test switch)

Note: CCEA housings are not compatible with emergency.

INSTALLATION:

New Construction: Bar hangers are adjustable from 13-3/4" to 24-1/2" and can be repositioned 90 degrees. Bar hangers are slotted for T-bar installation.

Remodel: Three high-tension tempered steel springs secure remodel housing to ceiling.

ACCESSORIES: Variety of housing and reflector accessories are available on page 23.

LISTING & WARRANTY:

- cULus Listed for Wet Location (Adj. rated for Damp)
- ENERGY STAR certified
- Can be used to comply with 2019 Title 24 - part 6 High Efficacy LED light source requirements
- ROHS compliant
- FCC compliant
- 5 Year Limited Warranty



COMMERCIAL AND RESIDENTIAL IOLITE SERIES

800LM TO 2500LM 2" REFLECTORS

NEW CONSTRUCTION OR REMODEL HOUSING REQUIRED



NIOB-2RC
2" Round Cone Regress
New Const: 30° Adj. (800-1000lm)
New Const: 25° Adj. (1500-2500lm)
Remodel: 15° Adj. (800-1000lm)
BB, BW, BZ, CHMPW, CMPW,
HW, HZMPW, MPW, NN, WW



NIOB-2SC
2" Square Cone Regress
New Const: 15° Adj. (800-2500lm)
Remodel: 15° Adj. (800-1000lm)
BB, BW, BZ, CHMPW, CMPW,
HW, HZMPW, MPW, NN, WW



NIOB-2RG
2" Round Surface Gimbal
New Const: 30° Adj. (800-1000lm)
New Const: 12° Adj. (1500-2500lm)
Remodel: 15° Adj. (800-1000lm)
BB, BZ, MPW, NN, WW



NIOB-2SG
2" Square Surface Gimbal
New Const: 15° Adj. (800-1000lm)
Remodel: 15° Adj. (800-1000lm)
BB, BZ, MPW, NN, WW
Not compatible w/ High Lumen housings



NIOB-2RNB
2" Round Bullnose
Non-Adjustable
BB, BZ, MPW, NN, WW



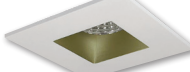
NIOB-2SNB
2" Square Bullnose
Non-Adjustable
BZ, MPW, NN, WW



NIOB-2RND
2" Round Reflector w/
Round Aperture
Non-Adjustable
BB, BW, BZ, CHMPW, CMPW,
HW, HZMPW, MPW, NN, WW



NIOB-2SND
2" Square Reflector w/
Round Aperture
Non-Adjustable
BB, BW, BZ, CHMPW, CMPW,
HW, HZMPW, MPW, NN, WW



NIOB-2SNDSQ
2" Square Reflector w/
Square Aperture
Non-Adjustable
BB, BW, BZ, CHMPW,
HW, HZMPW, MPW, WW



NIOB-2RPH
2" Round Pinhole
Non-Adjustable
BB, BMPW, HZMPW, MPW



NIOB-2RPHA
2" Round Adjustable Pinhole
New Const: 28° Adj. (800-1000lm)
New Const: 20° Adj. (1500-2500lm)
Remodel: 15° Adj. (800-1000lm)
BB, BMPW, HZMPW, MPW, WW



NIOB-2RSL
2" Round Slot Aperture
New Const: 30° Adj. (800-2500lm)
Remodel: 15° Adj. (800-1000lm)
BB, BMPW, HZMPW, MPW

2" IOLITE REFLECTORS REQUIRES NHIOICD-2, NHIOICDCP-2 OR NHRIOIC-2 HOUSING

SERIES / SHAPE	REFLECTOR TYPE	COLOR TEMP	FINISH	LUMENS / WATTAGE
NIOB-2R 2" Round	C Adj Cone Regress	27X 2700K	BB Black / Black	(blank) 800lm / 14W
NIOB-2S 2" Square	G Adj. Surface Gimbal	30X 3000K	BMPW Black / Matte Powder White	/10 1000lm / 14W
	NB Non-Adjustable Bullnose	35X 3500K	BW Black / White	/HL 1500-2500lm (specified by housing)
	NDC Non-Adj. Reflector w/Round Aperture	40X 4000K	BZ Bronze / Bronze	Comfort Dim available in 800lm only
	NDSQ Non-Adj. Reflector w/Square Aperture (square only)	50X 5000K	CHMPW Champagne Haze / MPW	
	PHA Adjustable Pinhole (round only)	CDX Comfort Dim* (800lm only)	CMPW Specular Clear / MPW	
	PH Non-Adj. Pinhole (round only)		HW Haze / White	
	SL Adj. Slot Aperture (round only)		HZMPW Haze / Matte Powder White	
			MPW Matte Powder White	
			NN Natural Metal	
			WW White / White	
			<i>Not all finishes available on all reflectors</i>	

Example: **NIOB-2RG27XBZ** - 2" Round Adjustable Surface Gimbal, 2700K, Bronze Reflector / Bronze Flange, 800lm / 14W



NIOB-2RCY
2" iPOINT Cylinder
BB, MPW



NIOB-2RTC
2" iPOINT Cone
BB, MPW

The iPOINT series are low voltage monopoints that require a 2" Iolite new construction or remodel housing. The series is adjustable and replicate an Iolite reflector.

2" iPOINT REQUIRES NHIOICD-28 OR NHRIOIC-28 HOUSING

FIXTURE TYPE / LUMENS	COLOR TEMPERATURE / CRI	FINISH
NIOB-2RCY 2" Cylinder - 1000lm / 14W	27X 2700K / 90 CRI	BB Black Interior / Black Exterior
NIOB-2RTC 2" Cone - 1200lm / 14W	30X 3000K / 90 CRI	MPW Matte Powder White Interior & Exterior
	35X 3500K / 90 CRI	
	40X 4000K / 90 CRI	
	50X 5000K / 90 CRI	

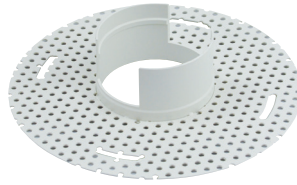
Example: **NIOB-2RCY27XMPW** - 2" iPOINT Cylinder, 2700K / 90 CRI, Matte Powder White Interior / Matte Powder White Exterior, 1000lm / 14W

IOLITE SERIES COMMERCIAL AND RESIDENTIAL

2" TRIMLESS REFLECTORS 800LM TO 1000LM

2" IOLITE NEW CONSTRUCTION HOUSING REQUIRED

Iolite Trimless has no exposed trim flange and does not extend below the ceiling plane. This clean and sophisticated look is accomplished by mudding the trimless mud ring to the ceiling, then snapping the flangeless reflector into the ring. Iolite Trimless is available in 2" and 4" apertures.



NIO-TLMR-2R
2" Round Trimless Mud Ring



NIO-2RTL A
2" Round Trimless Adjustable
15° Adjustable
BB, BW, BZ, CH, CHMPW, HW,
HZ, HZMPW, MPW, WW



NIO-2RTL NDC
2" Round Trimless Reflector
Non-Adjustable
BB, BZ, CH, HZ, MPW, WW

Iolite Trimless requires three parts:

1. Iolite New Construction Housing
2. Iolite Trimless Mud Ring
3. Iolite Trimless Reflector



1. IOLITE NEW CONSTRUCTION HOUSING

REQUIRES MUD RING AND TRIMLESS REFLECTOR

HOUSING TYPE / LUMENS / WATTAGE	DRIVER / DIMMING	REMOTE EMERGENCY
NHIOICD-28 2" ICAT, 800-1000lm / 14W	LE3 120V input; Triac / ELV	/PEM Remote Emergency for LE3 & LE4
NHIOICDCP-28 2" CP, 800-1000lm / 14W ¹	LE4 120-277V input; Triac / ELV / 0-10V	
	LUPEQ 120/277V input; Lutron Hi-lume 0.1% EcoSystem	
	LUPEQ1 120/277V input; Lutron Hi-lume 1% EcoSystem	

¹ - Chicago Plenum Housings are not compatible with remote emergency

Example: **NHIOICD-28LE3** - 2" New Construction Housing, 800-1000lm, 120V input

2. IOLITE TRIMLESS MUD RING

REQUIRES HOUSING AND TRIMLESS REFLECTOR

SERIES / APERTURE	SHAPE
NIO-TLMR-2 2" Trimless Mud Ring	R Round

Example: **NIO-TLMR-2R** - Trimless Mud Ring for 2" Round Trimless Reflector

3. IOLITE MODULAR TRIMLESS REFLECTORS

REQUIRES HOUSING AND TRIMLESS MUD RING

SERIES / APERTURE / TYPE	COLOR TEMP	FINISH	LUMENS / WATTAGE	
NIO-2RTL A 2" Round Trimless Adjustable NIO-2RTL NDC 2" Round Trimless Reflector	27X 2700K	BB Black	(blank) 800lm / 14W /10 1000lm / 14W <small>Comfort Dim available in 800lm only</small>	
	30X 3000K	BW Black / White		
	35X 3500K	BZ Bronze		
	40X 4000K	CH Champagne Haze		
	50X 5000K	CHMPW Champagne Haze / Matte Powder White		
	CDX Comfort Dim*	HW Haze / White		
	<small>* Comfort Dim uses premium non-Cree COB. 1" Iolite uses a different dimming curve than 2" and 4" Comfort Dim.</small>	HZ Haze		HZMPW Haze / Matte Powder White
				MPW Matte Powder White
				WW White
				<small>Not all finishes available on all reflectors</small>

Example: **NIO-2RTL NDC30XMPW** - 2" Round Trimless Reflector, 3000K, Matte Powder White, 800lm / 14W



IOLITE SERIES COMMERCIAL AND RESIDENTIAL

4" HOUSINGS 800LM TO 2500LM



Patent No. D824567S

NHIOICD-48 / NHIOICDCP-48
4" Iolite New Construction Housing

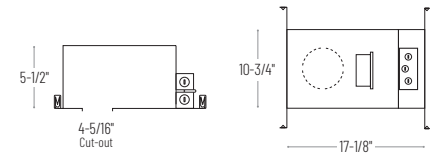
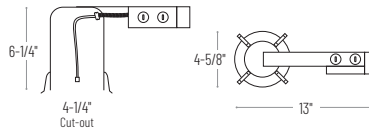
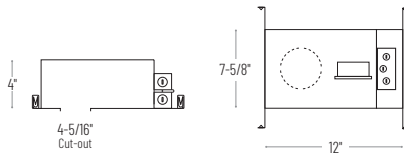


NHRIOIC-48
4" Iolite Remodel Housing



Patent No. D824567S

NHIOICD-415 / NHIOICD-420 / NHIOICD-425
NHIOICDCP-415 / NHIOICDCP-420 / NHIOICDCP-425
4" Iolite High Lumen New Construction Housing



4" IOLITE HOUSING

HOUSING TYPE / LUMENS / WATTAGE	DRIVER / DIMMING	OPTIONAL EMERGENCY WIRING
NHIOICD-48 4" IC Air-Tight New Construction, 800-1000lm / 14W	LE3 120V input; Triac / ELV Dimming	/PEM Remote Emergency for LE3
NHIOICDCP-48 4" Chicago Plenum New Construction, 800-1000lm / 14W ¹	LE4 120-277V input; Triac / ELV / 0-10V Dimming LUPEQ 120/277V input; Lutron Hi-lume 0.1% EcoSystem LUPEQ1 120/277V input; Lutron Hi-lume 1% EcoSystem	/6WPEM Remote Emergency for LE4
NHRIOIC-48 4" IC Air-Tight Remodel, 800-1000lm / 14W	LE3 120V input; Triac / ELV Dimming LE4 120-277V input; Triac / ELV / 0-10V Dimming <i>Consult factory for Lutron EcoSystem</i>	
NHIOICD-415 4" ICAT High Lumen New Construction, 1500lm / 20W	LE4 120-277V input; Triac / ELV / 0-10V Dimming	/PEM Remote Emergency
NHIOICDCP-415 4" CCEA High Lumen New Construction, 1500lm / 20W ¹	LUPEQ 120/277V input; Lutron Hi-lume 0.1% EcoSystem LUPEQ1 120/277V input; Lutron Hi-lume 1% EcoSystem	
NHIOICD-420 4" ICAT High Lumen New Construction, 2000lm / 24W	LE4 120-277V input; Triac / ELV / 0-10V Dimming	
NHIOICDCP-420 4" CCEA High Lumen New Construction, 2000lm / 24W ¹		
NHIOICD-425 4" ICAT High Lumen New Construction, 2500lm / 28W		
NHIOICDCP-425 4" CCEA High Lumen New Construction, 2500lm / 28W ¹		

¹ - Chicago Plenum Housings are not compatible with remote emergency

Example: **NHIOICD-48LE3** - 4" New Construction Housing, 800-1000lm / 14W, 120V input; Triac/ELV dimming

ELECTRICAL:

Voltage: 120V or 120-277V
Lumens / Wattage: 800 / 14W, 1000lm / 14W, 1500lm / 20W, 2000lm / 24W, 2500lm / 28W
Color Rendering Index: 90+ CRI
Color Temperature: 2700K, 3000K, 3500K, 4000K, 5000K and Comfort Dim (3100K-2000K)
LED: Cree® COB (2700K-5000K), premium non-Cree COB (Comfort Dim)
Dimming: Triac, ELV or 0-10V

COMFORT DIM:

Comfort Dim color tunes the temperature from a bright 3100K, to a romantic and comfortable 2000K on a gradual, even curve. Available in 800lm only.

CONSTRUCTION:

New Construction Housing: Aluminum Air-Tight housing meets air-tight requirements. IC rated for direct contact with thermal insulation. Features patented design with driver mounted to slide out tray. Disconnects are furnished for the line voltage connection as well as the module connection.

Remodel Housing: Aluminum housing connects to arm with junction box and driver compartment. IC rated for direct contact with thermal insulation.

Reflector/Module: Die-cast aluminum reflectors are threaded to mount LED module securely and dissipate heat away from light source. Three field-changeable optics are included with each luminaire: spot, narrow flood and flood (installed).

EMERGENCY: New construction housing is wired with connections for emergency battery installation. Requires top access & NEPK-07LEDUNV (Battery with remote test switch).

Note: CCEA housings are not compatible with emergency.

INSTALLATION:

New Construction: Bar hangers are adjustable from 13-3/4" to 24-1/2" and can be repositioned 90 degrees. Bar hangers are slotted for T-bar installation.

Remodel: Three high-tension tempered steel springs secure remodel housing to ceiling.

LISTING & WARRANTY:

- cULus Listed for Wet Location (Adj. rated for Damp)
- ENERGY STAR certified
- Can be used to comply with 2019 Title 24 - part 6 High Efficacy LED light source requirements
- ROHS compliant
- FCC compliant
- 5 Year Limited Warranty



COMMERCIAL AND RESIDENTIAL **IOLITE SERIES**
 800LM TO 2500LM 4" REFLECTORS
 NEW CONSTRUCTION OR REMODEL HOUSING REQUIRED



NIO-4RC
 4" Round Cone Regress
 New Const: 45° Adj. (800-1000lm)
 New Const: 28° Adj. (1500-2500lm)
 Remodel: 40° Adj. (800-1000lm)
 BB, BW, BZ, CHMPW, CMPW,
 HW, HZMPW, MPW, NN, WW



NIO-4SC
 4" Square Cone Regress
 New Const: 45° Adj. (800-1000lm)
 New Const: 35° Adj. (1500-2500lm)
 Remodel: 40° Adj. (800-1000lm)
 BB, BW, BZ, CHMPW, CMPW,
 HW, HZMPW, MPW, NN, WW



NIO-4RG
 4" Round Surface Gimbal
 New Const: 45° Adj. (800-1000lm)
 New Const: 28° Adj. (1500-2500lm)
 Remodel: 40° Adj. (800-1000lm)
 BB, BZ, MPW, NN, WW



NIO-4SG
 4" Square Surface Gimbal
 New Const: 45° Adj. (800-1000lm)
 New Const: 35° Adj. (1500-2500lm)
 Remodel: 40° Adj. (800-1000lm)
 BB, BZ, MPW, NN, WW



NIO-4SDSQ
 4" Square Adjustable
 New Const: 35° Adj. (800-2500lm)
 Remodel: 20° Adj. (800-1000lm)
 BB, BW, BZ, CHMPW, HN,
 HW, HZMPW, MPW, WW



NIO-4RNB
 4" Round Bullnose
 Non-Adjustable
 BB, BZ, MPW, NN, WW



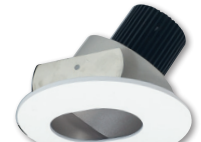
NIO-4SNB
 4" Square Bullnose
 Non-Adjustable
 BB, BZ, MPW, NN, WW



NIO-4RPH
 4" Round Pinhole
 Non-Adjustable
 BB, BMPW, HZMPW, MPW



NIO-4RPHA
 4" Round Adjustable Pinhole
 New Const: 30° Adj. (800-2500lm)
 Remodel: 10° Adj. (800-1000lm)
 BB, BMPW, HZMPW, MPW, WW



NIO-4RSL
 4" Round Slot Aperture
 New Const: 40° Adj. (800-1000lm)
 New Const: 25° Adj. (1500-2500lm)
 Remodel: 15° Adj. (800-1000lm)
 BB, BMPW, HZMPW, MPW



NIO-4RD
 4" Round Deep Adjustable
 New Const: 40° Adj. (800-2500lm)
 Remodel: 20° Adj. (800-1000lm)
 BB, BW, BZ, CHMPW, HW,
 HZMPW, MPW, NN, WW



NIO-4SD
 4" Square Deep Adjustable
 New Const: 40° Adj. (800-2500lm)
 Remodel: 20° Adj. (800-1000lm)
 BB, BW, BZ, CHMPW, HW,
 HZMPW, MPW, NN, WW



NIO-4RND
 4" Round Reflector w/
 Round Aperture
 Non-Adjustable
 BB, BW, BZ, CHMPW, CMPW,
 HW, HZMPW, MPW, NN, WW



NIO-4SND
 4" Square Reflector w/
 Round Aperture
 Non-Adjustable
 BB, BW, BZ, CHMPW, CMPW,
 HW, HZMPW, MPW, NN, WW



NIO-4SNDQ
 4" Square Reflector w/
 Square Aperture
 Non-Adjustable
 BB, BW, BZ, CHMPW, HN,
 HW, HZMPW, MPW, WW



NIO-4SW
 4" Square Wall Wash
 Non-Adjustable
 BB, CHMPW, HW, HZMPW, MPW, WW
*Not compatible w/ Remodel housings
 or 2500lm housing*

4" IOLITE REFLECTORS REQUIRES NHI0ICD-4, NHI0ICDCP-4 OR NHRIOIC-4 HOUSING

SERIES / SHAPE	REFLECTOR TYPE	COLOR TEMP	FINISH	LUMENS / WATTAGE
NIO-4R 4" Round	C Adjustable Cone Regress	27X 2700K	BB Black / Black	(blank) 800lm / 14W
NIO-4S 4" Square	D Deep Adjustable w/ Round Aperture	30X 3000K	BMPW Black / Matte Powder White	/10 1000lm / 14W
	G Adjustable Surface Gimbal	35X 3500K	BW Black / White	/HL 1500-2500lm
	DSQ Square Adjustable (square only)	40X 4000K	BZ Bronze / Bronze	(specified by housing)
	NB Non-Adjustable Bullnose	50X 5000K	CHMPW Champagne Haze / MPW	Comfort Dim available in 800lm only
	NDC Non-Adj. Reflector w/Round Aperture	CDX Comfort Dim* (800lm only)	CMW Specular Clear / MPW	
	NDSQ Non-Adj. Reflector w/Square Aperture (square only)		HN Haze / Natural Metal	
	PHA Adjustable Pinhole (round only)		HW Haze / White	
	PH Non-Adjustable Pinhole (round only)		HZMPW Haze / Matte Powder White	
	SL Adjustable Slot Aperture (round only)		MPW Matte Powder White	
	W Non-Adjustable Wall Wash (square only)		NN Natural Metal	
			WW White / White	

** Comfort Dim uses premium non-Cree COB. 1" Iolite uses a different dimming curve than 2" and 4" Comfort Dim.*

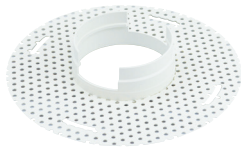
Not all finishes available on all reflectors

Example: **NIO-4SG30XNN** - 4" Square Adjustable Surface Gimbal, 3000K, Natural Metal Gimbal / Natural Metal Flange, 800lm / 14W

IOLITE SERIES COMMERCIAL AND RESIDENTIAL 4" TRIMLESS REFLECTORS 800LM TO 2500LM

4" IOLITE NEW CONSTRUCTION HOUSING REQUIRED

Iolite Trimless has no exposed trim flange and does not extend below the ceiling plane. This clean and sophisticated look is accomplished by mudding the trimless mud ring to the ceiling, then snapping the flangeless reflectors into the ring. Iolite Trimless is available in 2" and 4" apertures.



NIO-TLMR-4R Round
NIO-TLMR-4S Square
4" Trimless Mud Ring



NIO-4RTLA
4" Round Trimless Adjustable
35° Adj. (800-1000lm)
24° Adj. (1500-2500lm)
BB, BW, BZ, CH, CHMPW, HW,
HZ, HZMPW, MPW, WW



NIO-4RTLND
4" Round Trimless Reflector
Non-Adjustable
BB, BZ, CH, HZ, MPW, WW



NIO-4STLND
4" Square Trimless Reflector
Non-Adjustable
BB, BZ, CH, HZ, MPW, WW
Not compatible w/ High Lumen housings

Iolite Trimless requires three parts:

1. Iolite New Construction Housing
2. Iolite Trimless Mud Ring
3. Iolite Trimless Reflector



1. IOLITE NEW CONSTRUCTION HOUSING

REQUIRES MUD RING AND TRIMLESS REFLECTOR

HOUSING TYPE / LUMENS / WATTAGE	DRIVER / DIMMING	REMOTE EMERGENCY
NHIOICD-48 4" ICAT, 800-1000lm / 14W NHIOICDCP-48 4" CP, 800-1000lm / 14W ¹	LE3 120V input; Triac / ELV LE4 120-277V input; Triac / ELV / 0-10V LUPEQ 120/277V input; Lutron Hi-lume 0.1% EcoSystem LUPEQ1 120/277V input; Lutron Hi-lume 1% EcoSystem	/PEM Remote Emergency for LE3 & LE4
NHIOICD-415 4" ICAT, 1500lm / 20W NHIOICDCP-415 4" CCEA, 1500lm / 20W ¹	LE4 120-277V input; Triac / ELV / 0-10V LUPEQ 120/277V input; Lutron Hi-lume 0.1% EcoSystem LUPEQ1 120/277V input; Lutron Hi-lume 1% EcoSystem	
NHIOICD-420 4" ICAT, 2000lm / 24W NHIOICDCP-420 4" CCEA, 2000lm / 24W ¹ NHIOICD-425 4" ICAT, 2500lm / 28W NHIOICDCP-425 4" CCEA, 2500lm / 28W ¹	LE4 120-277V input; Triac / ELV / 0-10V	/PEM Remote

¹ - Chicago Plenum Housings are not compatible with remote emergency

Example: **NHIOICD-48LE3** - 4" New Construction Housing, 800-1000lm, 120V input

2. IOLITE TRIMLESS MUD RING

REQUIRES HOUSING & TRIMLESS REFLECTOR

SERIES / APERTURE / SHAPE

NIO-TLMR-4R 4" Round Trimless Mud Ring
NIO-TLMR-4S 4" Square Trimless Mud Ring

Example: **NIO-TLMR-4R** - Trimless Mud Ring
for 4" Round Trimless Reflector

3. IOLITE MODULAR TRIMLESS REFLECTORS

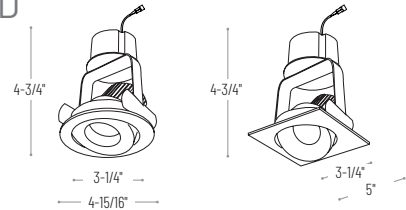
REQUIRES HOUSING AND TRIMLESS MUD RING

SERIES / APERTURE / TYPE	COLOR TEMP	FINISH	LUMENS / WATTAGE
NIO-4RTLA 4" Round Trimless Adjustable NIO-4RTLND 4" Round Trimless Reflector NIO-4STLND 4" Square Trimless Reflector (800lm or 1000lm only)	27X 2700K 30X 3000K 35X 3500K 40X 4000K 50X 5000K CDX Comfort Dim* (800lm only)	BB Black BW Black / White BZ Bronze CH Champagne Haze CHMPW Champagne Haze / Matte Powder White HW Haze / White HZ Haze HZMPW Haze / Matte Powder White MPW Matte Powder White WW White	(blank) 800lm / 14W /IO 1000lm / 14W /HL 1500-2500lm (specified by housing) Comfort Dim available in 800lm only
* Comfort Dim uses premium non-Cree COB. Iolite uses a different dimming curve than 2" and 4" Comfort Dim.		Not all finishes available on all reflectors	

Example: **NIO-4RTLND30XMPW** - 4" Round Trimless Reflector, 3000K, Matte Powder White Reflector, 800lm / 14W



IOLITE SERIES LED RETROFIT AND DEDICATED 4" RETROFIT 800LM OR 1000LM



NIR-4RC
4" Round Cone Regress
BB, BW, BZ, CHMPW, CMPW,
HW, HZMPW, MPW, NN, WW

NIR-4SC
4" Square Cone Regress
BB, BW, BZ, CHMPW, CMPW,
HW, HZMPW, MPW, NN, WW

NIR-4RG
4" Round Surface Gimbal
BB, BZ, MPW, NN, WW

NIR-4SG
4" Square Surface Gimbal
BB, BZ, MPW, NN, WW

NIR-4RNB
4" Round Bullnose
BB, BZ, MPW, NN, WW

NIR-4SNB
4" Square Bullnose
BB, BZ, MPW, NN, WW

4" IOLITE RETROFIT

SERIES / APERTURE	REFLECTOR TYPE	COLOR TEMP	FINISH	LUMENS / WATTAGE
NIR-4R 4" Round Retrofit	C Cone Regress	27X 2700K	BB Black / Black Flange	(blank) 800lm / 12W
NIR-4S 4" Square Retrofit	G Surface Gimbal	30X 3000K	BW Black / White Flange	/10 1000lm / 12W
	NB Non-Adj. Bullnose	35X 3500K	BZ Bronze / Bronze Flange	Comfort Dim available in 800lm only
		40X 4000K	CHMPW Champagne Haze / Matte Powder White Flange	
		50X 5000K	CMPW Specular Clear / Matte Powder White Flange	
		CDX Comfort Dim* (800lm only)	HW Haze / White Flange	
			HZMPW Haze / Matte Powder White Flange	
			MPW Matte Powder White / Matte Powder White Flange	
			NN Natural Metal / Nat. Metal Flange	
			WW White / White Flange	

* Comfort Dim uses premium non-Cree COB. 1" Iolite uses a different dimming curve than 2" and 4" Comfort Dim.

Example: **NIR-4RC27XWW** - 4" Round Cone Regress Retrofit, 2700K, Natural Metal with Natural Metal Flange, 800lm / 12W

4" Iolite retrofit LED adjustable downlights are available in square and round designs. The modular system allows users to field change both the reflector and beam spread from spot to flood without using any tools. The LED module is 12W and produces 800 to 1000 lumens at 90 CRI in various kelvin temperatures.

ELECTRICAL:

Voltage: 120V

Lumens / Wattage: 800 or 1000lm / 12W

Color Rendering Index: 90+ CRI

Color Temperature: 2700K, 3000K, 3500K, 4000K, 5000K and Comfort Dim (3100K-2000K)

LED: Cree® COB (2700K-5000K),

premium non-Cree COB (Comfort Dim)

Dimming: Triac or ELV

COMFORT DIM: Comfort Dim color tunes the temperature from a bright 3100K, to a romantic and comfortable 2000K on a gradual, even curve. Available in 800lm only.

CONSTRUCTION:

Reflector/Module: Die-cast aluminum reflectors are threaded to mount LED module securely and dissipate heat away from light source. Three field-changeable optics are included with each luminaire: spot, narrow flood and flood (installed).

INSTALLATION: Compatible with Nora housings listed and with some 4" housing by others. Check dimensions - in some cases compatibility requires removing the existing socket from housing.

RETROFIT: Iolite retrofit series includes medium base socket adapter (NRA-212SM) for retrofitting into existing medium base downlight housings. GU24 socket adapter is available for use with GU24 housings, must specify NRA-212SM.

LISTING & WARRANTY:

- cULus Classified for Damp Location
- ENERGY STAR certified
- ROHS compliant
- 5 Year Limited Warranty

COMPATIBLE HOUSINGS:

New Construction

NHIC-4LMRAT 4" ICAT Dedicated LED

NFBIC-4LMRATA 4" ICAT Dedicated LED Fire Box

NHIC-4LMRAT/277 4" ICAT Dedicated LED, 277V

NSIC-401QAT 4" ICAT Line Voltage

NFBIC-4INCATA 4" ICAT Line Voltage Fire Box

NS-401QAT 4" AT Line Voltage

NHIC-4G24AT 4" ICAT GU24¹

Remodel

NHRIC-4LMRAT 4" Remodel ICAT Dedicated LED

NSR-404QAT 4" Remodel AT Line Voltage

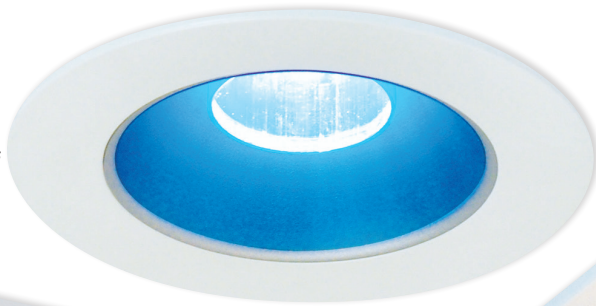
NHRIC-4G24AT 4" Remodel ICAT GU24¹

¹Requires NRA-212SM - GU24 adapter



IOLITE SERIES ACCESSORIES

Shown with blue translucent Deco collar. Aperture appears blue, but light output is as specified white.



Shown with snoot accessory. Minimizes aperture brightness and softens beam edge



Shown with amber translucent Deco collar. Aperture appears amber, but light output is as specified white.



Ceiling Extension Collar

- NIO-1EXTC2** for NHIOICD-1
- NIO-2EXTC2** for NHIOICD-2
- NIO-4EXTC2** for NHIOICD-4

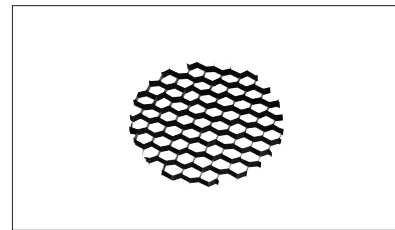
Allows new construction housings to install in ceiling thicknesses up to 2"



Frosted Filter-Optic for 800lm or 1000lm Reflectors

- NIO-1REFL20FR** 20° Reflector, 1" Iolite
- NIO-1REFL40FR** 40° Reflector, 1" Iolite
- NIO-1REFL60FR** 60° Reflector, 1" Iolite
- NIO-REFLTIR15** Premium 15° Reflector, 2" & 4" Iolite
- NIO-REFLTIR25** Premium 25° Reflector, 2" & 4" Iolite
- NIO-REFL15FR** 15° Reflector, 2" and 4" Iolite
- NIO-REFL25FR** 25° Reflector, 2" and 4" Iolite
- NIO-REFL38FR** 38° Reflector, 2" and 4" Iolite
- NIO-REFL60FR** 60° Reflector, 2" and 4" Iolite

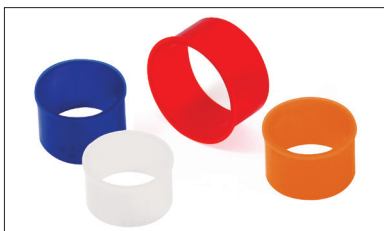
Optic assemblies include specified optic and frosted lens. Lens can be installed in other optics supplied with units. Compatible with 800lm or 1000lm modules only.



Hex Cell Louver

- NIO-1HC** for 1" Iolite
- NIO-HC** for 2" and 4" Iolite

Hex cell louver subtly reduces aperture brightness. It will also reduce light output by about 20%.



Translucent Deco Collar

- NIO-1AS15(color)** 5/8" (15mm) depth, 1" Iolite
- NIO-1AS19(color)** 3/4" (19mm) depth, 1" Iolite
- NIO-1AS24(color)** 1" (24mm) depth, 1" Iolite
- NIO-AS14(color)** 5/8" (15mm) depth, 2" and 4" Iolite
- NIO-AS19(color)** 3/4" (19mm) depth, 2" and 4" Iolite
- NIO-AS26(color)** 1" (24mm) depth, 2" and 4" Iolite

FINISH: BLU Blue; FR Frost; AM Amber; R Red

Translucent collars color the aperture with the specified color while producing white general light. Collars are available in different lengths. Use to add interest, create a theme, match a theme or define a space.

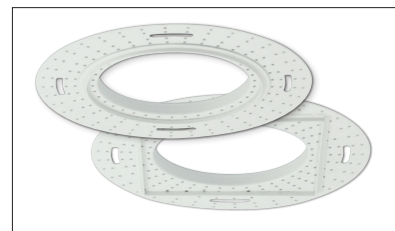


Opaque Collar Snoot

- NIO-1AS15(color)** 5/8" (15mm) depth, 1" Iolite
- NIO-1AS19(color)** 3/4" (19mm) depth, 1" Iolite
- NIO-1AS24(color)** 1" (24mm) depth, 1" Iolite
- NIO-AS14(color)** 5/8" (15mm) depth, 2" & 4" Iolite
- NIO-AS19(color)** 3/4" (19mm) depth, 2" & 4" Iolite
- NIO-AS26(color)** 1" (24mm) depth, 2" & 4" Iolite

COLOR: BLK Black; MPW Matte Powder White; WH White

Opaque snoot greatly reduces aperture brightness while preserving light output. (Note: Black snoot will reduce light).



Flush Mount Mud Ring

- NIO-FMMR-1R** 1" Round
- NIO-FMMR-1S** 1" Square
- NIO-FMMR-2R** 2" Round
- NIO-FMMR-2S** 2" Square
- NIO-FMMR-4R** 4" Round
- NIO-FMMR-4S** 4" Square

Allows flanged Iolite trims to be installed even with the ceiling plane. Flange is visible. Attaches to drywall. Requires professional drywall finishing. Only for use with NIOB-1, NIOB-2, NIO-4 reflectors and respective new construction housings.

Iolite accessories can be added at any point in the design process. Accessories easily install between module and die-cast reflector.

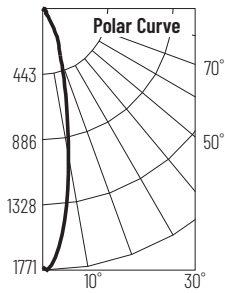
IOLITE SERIES

1" PHOTOMETRICS

1" IOLITE: 600LM / 3000K / 20° SPOT

Item Number: NIOB-1RNG3020WW

Lumens: 556lm Wattage: 9.2W Efficacy: 61lpw



Zonal Lumen Summary		
Zone	Lumens	% Luminaire
0-30	418	75.2
0-40	461	82.9
0-60	515	92.7
0-90	554	99.8

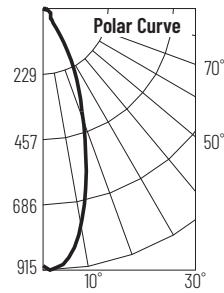
Candela Table	
Vertical Angles	Candela
0	1738
15	612
25	252
35	58
45	39

Illuminance at a Distance		
Distance from Luminaire	FC at Nadir	Beam Diameter
4'	109fc	1'-8"
6'	48.3fc	2'-6"
8'	27.2fc	3'-4"
10'	17.4fc	4'-2"
12'	12.1fc	5'

1" IOLITE: 600LM / 3000K / 40° NARROW FLOOD

Item Number: NIOB-1RNG3040WW

Lumens: 532lm Wattage: 9.2W Efficacy: 58lpw



Zonal Lumen Summary		
Zone	Lumens	% Luminaire
0-30	378	71
0-40	426	80.1
0-60	485	91.1
0-90	531	99.8

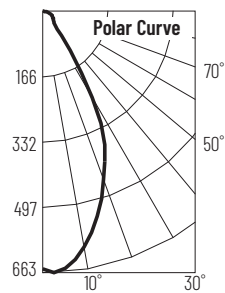
Candela Table	
Vertical Angles	Candela
0	910
15	606
25	291
35	66
45	38

Illuminance at a Distance		
Distance from Luminaire	FC at Nadir	Beam Diameter
4'	56.9fc	2'-10"
6'	25.3fc	4'-2"
8'	14.2fc	5'-7"
10'	9.1fc	7'
12'	6.3fc	8'-4"

1" IOLITE: 600LM / 3000K / 60° FLOOD

Item Number: NIOB-1RNG3060WW

Lumens: 539lm Wattage: 9.2W Efficacy: 58lpw



Zonal Lumen Summary		
Zone	Lumens	% Luminaire
0-30	363	67.3
0-40	436	80.9
0-60	494	91.7
0-90	538	99.8

Candela Table	
Vertical Angles	Candela
0	660
15	521
25	352
35	108
45	39

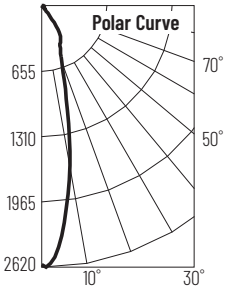
Illuminance at a Distance		
Distance from Luminaire	FC at Nadir	Beam Diameter
4'	41.2fc	3'-11"
6'	18.3fc	5'-10"
8'	10.3fc	7'-10"
10'	6.6fc	9'-8"
12'	4.6fc	11'-7"

IOLITE SERIES

2" PHOTOMETRICS

2" IOLITE: 800LM / 3000K / 25° SPOT

Item Number: NIOB-2RC3025WW
 Lumens: 947lm Wattage: 14.2W Efficacy: 67lpw



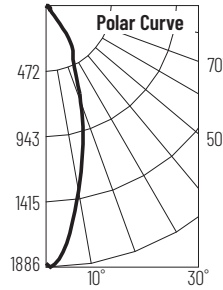
Zonal Lumen Summary		
Zone	Lumens	% Luminaire
0-30	675	71.2
0-40	839	88.6
0-60	906	95.7
0-90	945	99.8

Candela Table	
Vertical Angles	Candela
0	2594
15	967
25	443
35	291
45	45

Illuminance at a Distance		
Distance from Luminaire	FC at Nadir	Beam Diameter
4'	162fc	1'-8"
6'	72.1fc	2'-7"
8'	40.5fc	3'-6"
10'	25.9fc	4'-5"
12'	18fc	5'-2"

2" IOLITE: 800LM / 3000K / 38° NARROW FLOOD

Item Number: NIOB-2RC3038WW
 Lumens: 936lm Wattage: 14.2W Efficacy: 66lpw



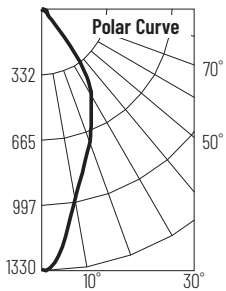
Zonal Lumen Summary		
Zone	Lumens	% Luminaire
0-30	623	70.8
0-40	824	88.1
0-60	892	95.3
0-90	934	99.8

Candela Table	
Vertical Angles	Candela
0	1858
15	1021
25	480
35	279
45	45

Illuminance at a Distance		
Distance from Luminaire	FC at Nadir	Beam Diameter
4'	116fc	2'-5"
6'	51.6fc	3'-7"
8'	29fc	4'-10"
10'	18.6fc	5'-11"
12'	12.9fc	7'-1"

2" IOLITE: 800LM / 3000K / 60° FLOOD

Item Number: NIOB-2RC3060WW
 Lumens: 962lm Wattage: 14.2W Efficacy: 68lpw



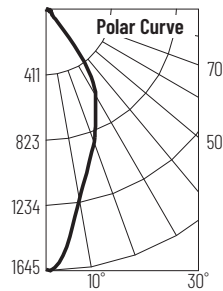
Zonal Lumen Summary		
Zone	Lumens	% Luminaire
0-30	614	63.8
0-40	831	86.3
0-60	913	94.9
0-90	960	99.8

Candela Table	
Vertical Angles	Candela
0	1324
15	826
25	594
35	371
45	56

Illuminance at a Distance		
Distance from Luminaire	FC at Nadir	Beam Diameter
4'	82.8fc	3'-4"
6'	36.8fc	4'-11"
8'	20.7fc	6'-6"
10'	13.2fc	8'-1"
12'	9.2fc	9'-10"

2" IOLITE: 1000LM / 3000K / 60° FLOOD

Item Number: NIOB-2RC3060WW/10
 Lumens: 1246lm Wattage: 13.2W Efficacy: 94lpw



Zonal Lumen Summary		
Zone	Lumens	% Luminaire
0-30	793	63.7
0-40	1071	86
0-60	1180	94.7
0-90	1243	99.8

Candela Table	
Vertical Angles	Candela
0	1635
15	1070
25	768
35	474
45	74

Illuminance at a Distance		
Distance from Luminaire	FC at Nadir	Beam Diameter
4'	102fc	3'-6"
6'	45.4fc	5'-2"
8'	25.5fc	6'-11"
10'	16.4fc	8'-8"
12'	11.4fc	10'-5"

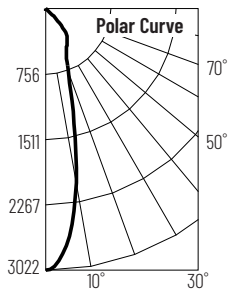
IOLITE SERIES

4" PHOTOMETRICS

4" IOLITE: 800LM / 4000K / 26° SPOT

Item Number: NIO-4RC4026WW

Lumens: 1294lm Wattage: 13.96W Efficacy: 93lpw



Zonal Lumen Summary		
Zone	Lumens	% Luminaire
0-30	844	65.2
0-40	1111	85.9
0-60	1281	99
0-90	1292	99.9

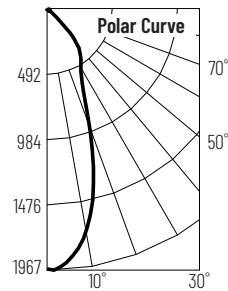
Candela Table	
Vertical Angles	Candela
0	3000
15	1193
25	556
35	426
45	194

Illuminance at a Distance		
Distance from Luminaire	FC at Nadir	Beam Diameter
4'	187fc	1'-10"
6'	83.3fc	2'-7"
8'	46.9fc	3'-6"
10'	30fc	4'-5"
12'	20.8fc	5'-4"

4" IOLITE: 800LM / 4000K / 39° NARROW FLOOD

Item Number: NIO-4RC4039WW

Lumens: 1329lm Wattage: 13.98W Efficacy: 95lpw



Zonal Lumen Summary		
Zone	Lumens	% Luminaire
0-30	848	63.9
0-40	1125	84.6
0-60	1304	98.2
0-90	1323	99.6

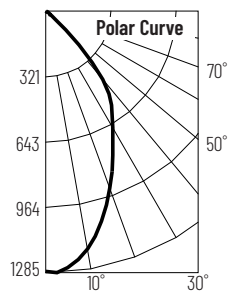
Candela Table	
Vertical Angles	Candela
0	1697
15	1013
25	495
35	126
45	68

Illuminance at a Distance		
Distance from Luminaire	FC at Nadir	Beam Diameter
4'	123fc	2'-10"
6'	54.7fc	4'-2"
8'	30.7fc	5'-7"
10'	19.7fc	7'
12'	13.7fc	8'-5"

4" IOLITE: 800LM / 4000K / 61° FLOOD

Item Number: NIO-4RC4061WW

Lumens: 1348lm Wattage: 14.07W Efficacy: 96lpw



Zonal Lumen Summary		
Zone	Lumens	% Luminaire
0-30	768	57
0-40	1081	80.2
0-60	1319	97.9
0-90	1343	99.6

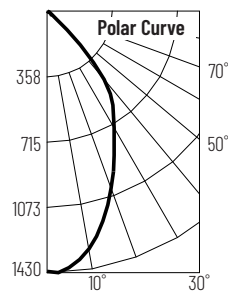
Candela Table	
Vertical Angles	Candela
0	1276
15	1050
25	768
35	553
45	222

Illuminance at a Distance		
Distance from Luminaire	FC at Nadir	Beam Diameter
4'	79.8fc	4'-8"
6'	35.5fc	7'
8'	19.9fc	9'-5"
10'	12.8fc	11'-8"
12'	8.9fc	14'

4" IOLITE: 1000LM / 4000K / 61° FLOOD

Item Number: NIO-4RC4061WW/10

Lumens: 1500lm Wattage: 13.47W Efficacy: 111lpw



Zonal Lumen Summary		
Zone	Lumens	% Luminaire
0-30	701	64.7
0-40	859	79.2
0-60	987	91.1
0-90	1077	99.3

Candela Table	
Vertical Angles	Candela
0	1423
15	1174
25	854
35	619
45	247

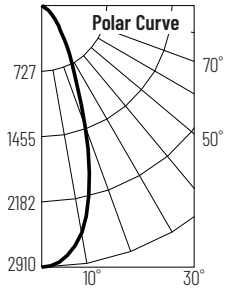
Illuminance at a Distance		
Distance from Luminaire	FC at Nadir	Beam Diameter
4'	88.9fc	4'-8"
6'	39.5fc	7'
8'	22.2fc	9'-5"
10'	14.2fc	11'-8"
12'	9.9fc	14'

IOLITE SERIES

4" PHOTOMETRICS

4" IOLITE: 1500LM / 4000K / 39° SPOT

Item Number: NIO-4RC40XWW/HL
 Lumens: 1829lm Wattage: 19.5W Efficacy: 94lpw



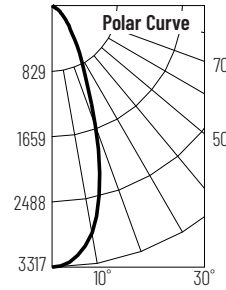
Zonal Lumen Summary		
Zone	Lumens	% Luminaire
0-30	1251	68.4
0-40	1518	83
0-60	1773	96.9
0-90	1817	99.3

Candela Table	
Vertical Angles	Candela
0	2910
15	2058
25	913
35	421
45	209

Illuminance at a Distance		
Distance from Luminaire	FC at Nadir	Beam Diameter
4'	182fc	2'-11"
6'	80.8fc	4'-4"
8'	45.5fc	5'-8"
10'	29.1fc	7'-2"
12'	20.2fc	8'-7"

4" IOLITE: 2000LM / 4000K / 39° SPOT

Item Number: NIO-4RC40XWW/HL
 Lumens: 2085lm Wattage: 24.1W Efficacy: 87lpw



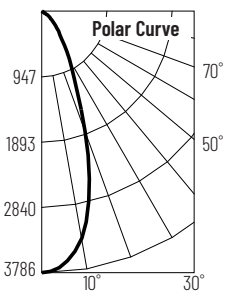
Zonal Lumen Summary		
Zone	Lumens	% Luminaire
0-30	1425	68.4
0-40	1730	83
0-60	2021	96.9
0-90	2071	99.3

Candela Table	
Vertical Angles	Candela
0	3317
15	2347
25	1042
35	480
45	238

Illuminance at a Distance		
Distance from Luminaire	FC at Nadir	Beam Diameter
4'	207fc	2'-11"
6'	92.1fc	4'-4"
8'	51.8fc	5'-8"
10'	33.2fc	7'-2"
12'	23fc	8'-7"

4" IOLITE: 2500LM / 4000K / 39° SPOT

Item Number: NIO-4RC40XWW/HL
 Lumens: 2368lm Wattage: 28.2W Efficacy: 84lpw



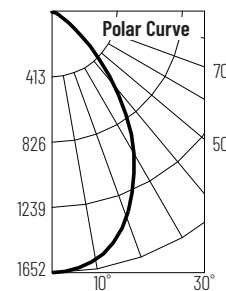
Zonal Lumen Summary		
Zone	Lumens	% Luminaire
0-30	1624	68.6
0-40	1943	82
0-60	2300	99.4
0-90	2355	99.4

Candela Table	
Vertical Angles	Candela
0	3786
15	2681
25	1183
35	544
45	271

Illuminance at a Distance		
Distance from Luminaire	FC at Nadir	Beam Diameter
4'	237fc	2'-11"
6'	105fc	4'-4"
8'	59.2fc	5'-8"
10'	37.9fc	7'-2"
12'	26.3fc	8'-7"

4" IOLITE: 2500LM / 4000K / 70° FLOOD

Item Number: NIO-4RC40XWW/HL
 Lumens: 2226lm Wattage: 27.8W Efficacy: 80lpw



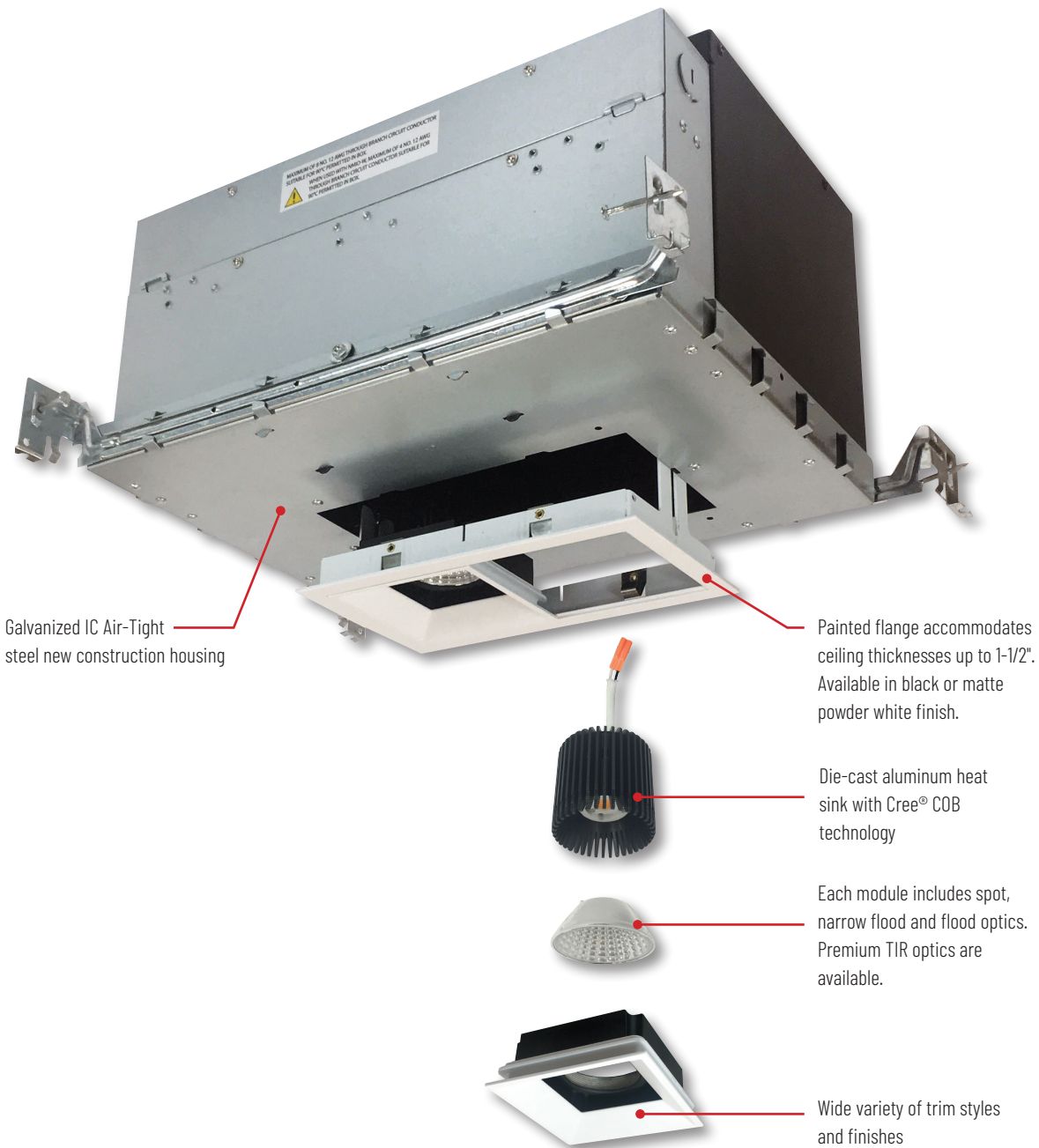
Zonal Lumen Summary		
Zone	Lumens	% Luminaire
0-30	1137	51.1
0-40	1613	72.5
0-60	2138	96.1
0-90	2211	99.3

Candela Table	
Vertical Angles	Candela
0	1652
15	1511
25	1216
35	841
45	428

Illuminance at a Distance		
Distance from Luminaire	FC at Nadir	Beam Diameter
4'	103fc	5'-8"
6'	45.9fc	8'-6"
8'	25.8fc	11'-5"
10'	16.5fc	14'-2"
12'	11.5fc	17'



IOLITE MULTIPLE LIGHTING SYSTEM



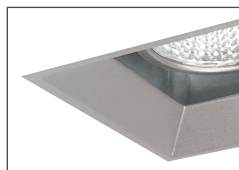
TRIM FINISHES



B Black



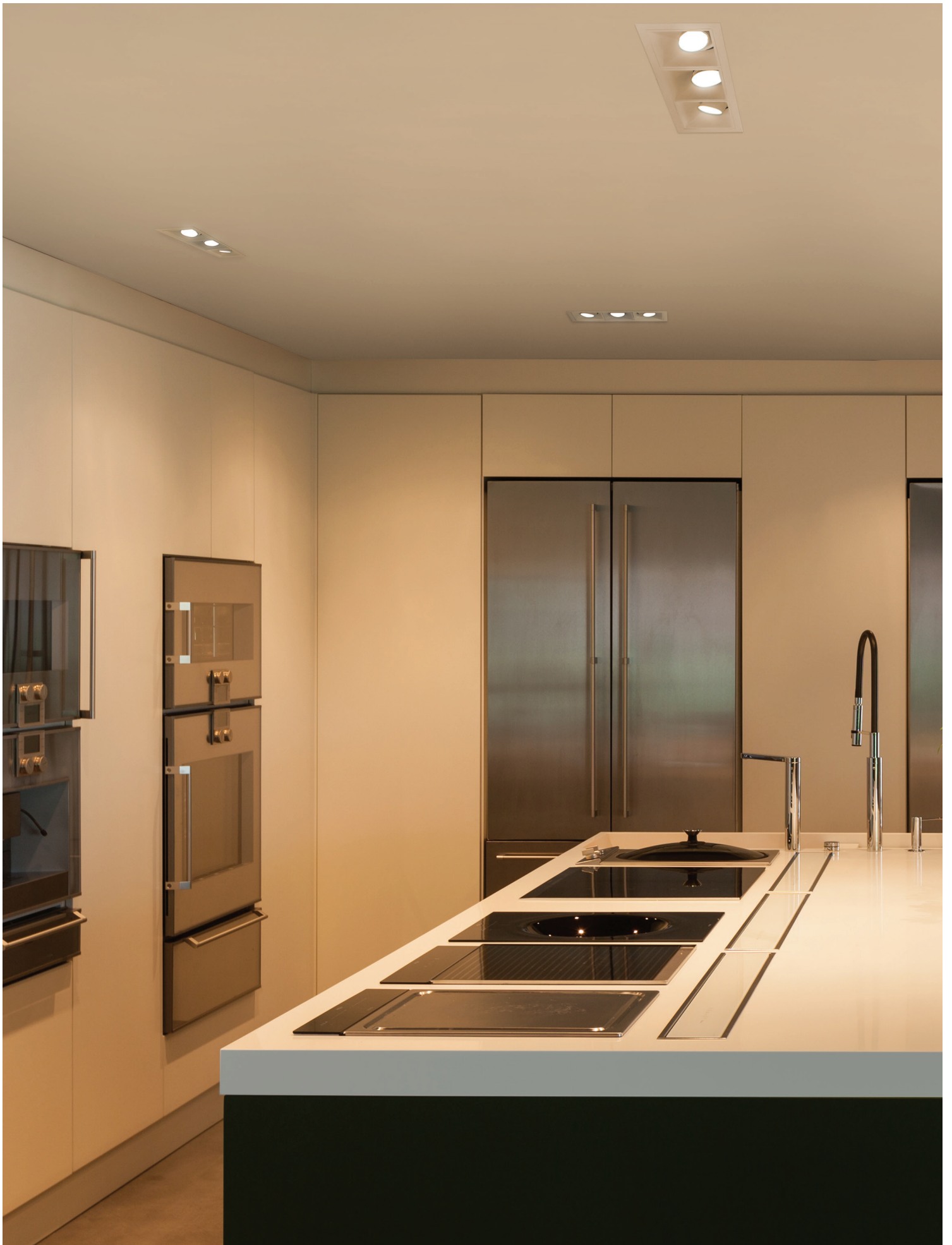
BMPW Black Interior /
Matte Power White Exterior



HZ Haze

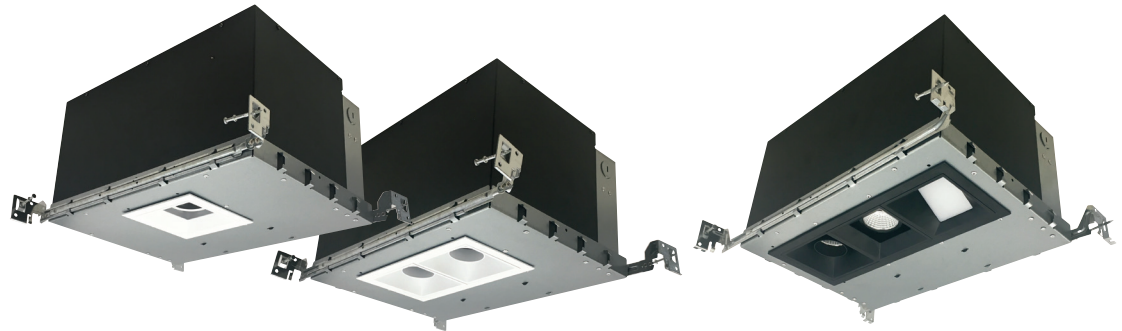
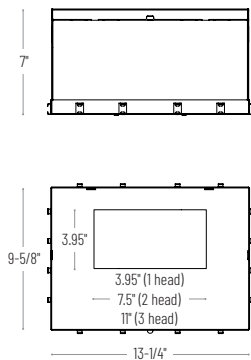


MPW Matte Powder White



LED DEDICATED IOLITE SERIES MULTIPLE

1000LM PER HEAD 1-3 ADJUSTABLE HEADS



NMHIOIC-11-LE4
One Head Iolite New Construction Housing

NMHIOIC-12-LE4
Two Head Iolite New Construction Housing

NMHIOIC-13-LE4
Three Head Iolite New Construction Housing

IOLITE MULTIPLE NEW CONSTRUCTION HOUSING

SERIES / NUMBER OF HEADS	DRIVER / DIMMING
NMHIOIC-11 One Head	-LE4 120-277V input; Triac / ELV / 0-10V dimming
NMHIOIC-12 Two Heads	
NMHIOIC-13 Three Heads	

Example: **NMHIOIC-13-LE4** - Three Head Iolite Multiple, 120-277V input, Triac / ELV / 0-10V Dimming



-A
Adjustable Snoot
20° Adjustable
B, HZ, MPW

-B
Blank Plate
B, HZ, MPW

-F
Fixed Downlight
Non-Adjustable
B, BMPW, HZ, MPW

-W
Wall Wash
Non-Adjustable
B, HZ, MPW

IOLITE MULTIPLE TRIM

FLANGE TYPE	NUMBER OF HEADS	FLANGE FINISH	TRIM TYPE	COLOR TEMP	LUMENS / WATTAGE PER HEAD	TRIM FINISH
NMIOT-1 Flanged	1 One Head 2 Two Heads 3 Three Heads	-NF Trimless -B Black -MPW Matte Powder White	-A Adjustable Snoot	27X 2700K	-10 1000lm / 12W per head (800lm with Comfort Dim)	-B Black -BMPW Black / Matte Powder White (fixed only) -HZ Haze -MPW Matte Powder White
NMIOTL-1 Trimless			-B Blank Plate	30X 3000K		
			-F Fixed Downlight	35X 3500K		
	-W Wall Wash	40X 4000K				
		50X 5000K CDX Comfort Dim				

Example: **NMIOT-13-MPW-AAF-30X-10-MPW** Matte Powder White Flange, Adjustable Snoot-Fixed-Adjustable Snoot, 3000K, 1000lm / 12W per head, Matte Powder White finish

The Iolite Multiple recessed family consists of one to three independently adjustable heads, a variety of beam distributions and three reflector options. The housing includes individual drivers for each module. Completely serviceable from below, Iolite Multiple series is a perfect solution for most retail, hospitality and commercial applications.

ELECTRICAL:

Voltage: 120V-277V

Lumens / Wattage: 1000lm / 12W per head
(Comfort Dim is 800lm per head)

Color Rendering Index: 90+ CRI

Color Temperature: 2700K, 3000K, 3500K, 4000K, 5000K and Comfort Dim (3100K-2000K)

Beam Spread: 25° Spot, 38° Narrow Flood, 60° Flood

LED: Cree® COB (2700K-5000K),

premium non-Cree COB (Comfort Dim)

Dimming: Triac, ELV or 0-10V

COMFORT DIM: Comfort Dim color tunes the temperature from a bright 3100K, to a romantic and comfortable 2000K on a gradual, even curve. Available in 800lm only.

CONSTRUCTION:

New Construction Housing: 0.0475" Galvanized steel housing with quick connects from each driver for ease of installation. Includes two adjustable bar hangers with L-shaped alignment foot and T-bar notch and pre-wired junction box suitable for through branch circuit wiring.

Trim/Module: Each trim assembly includes three optics (flood 60° - installed, narrow flood 38° and spot 25°) and quick connect for easy installation. Trim options include a fixed snoot, adjustable snoot (20° adjustable) and wall wash. Premium TIR optics are available in 15° and 25° beam spreads.

FLANGED/TRIMLESS: Trims can be specified with a flanged or trimless appearance. Trimless mud plate allows for a premium finishing technique with minimalist appearance.

ACCESSORIES:

NIO-REFLTIR15 Premium 15° TIR Optic (must specify per head)
NIO-REFLTIR25 Premium 25° TIR Optic (must specify per head)

LISTING & WARRANTY:

- cULus Listed for Damp Location
- ENERGY STAR certified
- 5-Year Limited Warranty
- Can be used to comply with 2019 Title 24 High Efficacy LED light source requirements

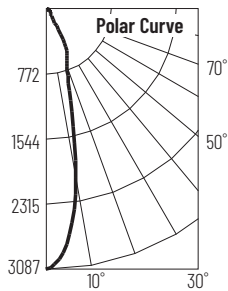


IOLITE SERIES

MULTIPLE PHOTOMETRICS

ADJUSTABLE SNOOT 4000K, 25°

Item Number: NMIOT-11-MPW-A-40X-10-MPW
 Lumens: 1116lm Wattage: 11.7W Efficacy: 96lpw



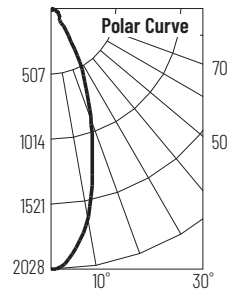
Zonal Lumen Summary		
Zone	Lumens	% Luminaire
0-30	824	73.8
0-40	921	82.5
0-60	1045	93.6
0-90	1111	99.5

Candela Table	
Vertical Angles	Candela
0	3087
15	1120
25	574
35	122
45	84

Illuminance at a Distance		
Distance from Luminaire	FC at Nadir	Beam Diameter
4'	193fc	1'-10"
6'	85.8fc	2'-8"
8'	48.2fc	3'-6"
10'	30.9fc	4'-5"
12'	21.4fc	5'-4"

ADJUSTABLE SNOOT 4000K, 38°

Item Number: NMIOT-11-MPW-A-40X-10-MPW
 Lumens: 1096lm Wattage: 11.6W Efficacy: 94lpw



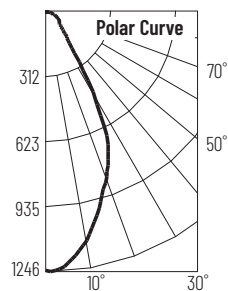
Zonal Lumen Summary		
Zone	Lumens	% Luminaire
0-30	796	72.6
0-40	896	81.8
0-60	1023	93.3
0-90	1091	99.5

Candela Table	
Vertical Angles	Candela
0	2028
15	1239
25	619
35	126
45	85

Illuminance at a Distance		
Distance from Luminaire	FC at Nadir	Beam Diameter
4'	127fc	2'-7"
6'	56.3fc	3'-11"
8'	31.7fc	5'-2"
10'	20.3fc	6'-6"
12'	14.1fc	7'-10"

ADJUSTABLE SNOOT 4000K, 60°

Item Number: NMIOT-11-MPW-A-40X-10-MPW
 Lumens: 1060lm Wattage: 11.6W Efficacy: 91lpw



Zonal Lumen Summary		
Zone	Lumens	% Luminaire
0-30	701	66.1
0-40	849	80.1
0-60	986	93.1
0-90	1055	99.6

Candela Table	
Vertical Angles	Candela
0	1246
15	982
25	708
35	208
45	93

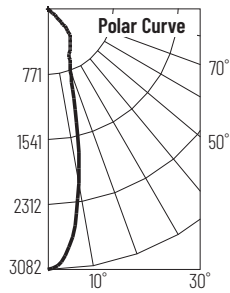
Illuminance at a Distance		
Distance from Luminaire	FC at Nadir	Beam Diameter
4'	77.9fc	4'-1"
6'	34.6fc	6'-1"
8'	19.5fc	8'-1"
10'	12.5fc	10'-1"
12'	8.7fc	12'-2"

IOLITE SERIES

MULTIPLE PHOTOMETRICS

FIXED DOWNLIGHT 4000K, 25°

Item Number: NMIOT-11-B-F-40X-10-BMPW
 Lumens: 1361lm Wattage: 11.7W Efficacy: 117lpw



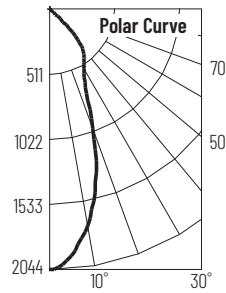
Zonal Lumen Summary		
Zone	Lumens	% Luminaire
0-30	868	63.8
0-40	1157	85
0-60	1346	98.9
0-90	1349	99.14

Candela Table	
Vertical Angles	Candela
0	3082
15	1208
25	595
35	464
45	227

Illuminance at a Distance		
Distance from Luminaire	FC at Nadir	Beam Diameter
4'	193fc	1'-10"
6'	85.6fc	2'-10"
8'	48.2fc	3'-8"
10'	30.8fc	4'-7"
12'	21.4fc	5'-6"

FIXED DOWNLIGHT 4000K, 38°

Item Number: NMIOT-11-B-F-40X-10-BMPW
 Lumens: 1368lm Wattage: 11.7W Efficacy: 117lpw



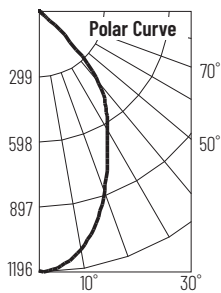
Zonal Lumen Summary		
Zone	Lumens	% Luminaire
0-30	867	63.4
0-40	1152	84.2
0-60	1354	99
0-90	1361	99.5

Candela Table	
Vertical Angles	Candela
0	2036
15	1386
25	654
35	455
45	237

Illuminance at a Distance		
Distance from Luminaire	FC at Nadir	Beam Diameter
4'	127fc	2'-10"
6'	56.5fc	4'-4"
8'	31.8fc	5'-8"
10'	20.4fc	7'-1"
12'	14.1fc	8'-6"

FIXED DOWNLIGHT 4000K, 60°

Item Number: NMIOT-11-B-F-40X-10-BMPW
 Lumens: 1340lm Wattage: 11.7W Efficacy: 115lpw



Zonal Lumen Summary		
Zone	Lumens	% Luminaire
0-30	750	55.9
0-40	1095	81.7
0-60	1323	98.7
0-90	1333	99.5

Candela Table	
Vertical Angles	Candela
0	1194
15	1033
25	763
35	557
45	258

Illuminance at a Distance		
Distance from Luminaire	FC at Nadir	Beam Diameter
4'	53.8fc	4'-11"
6'	23.9fc	7'-5"
8'	13.5fc	9'-11"
10'	8.6fc	12'-5"
12'	6fc	14'-10"

IOLITE SERIES

MULTIPLE PHOTOMETRICS

WALL WASH 4000K

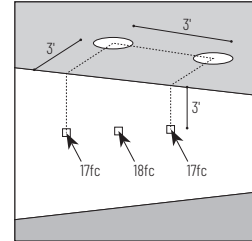
Item Number: NMIOT-11-B-W-40X-10-MPW

Lumens: 586lm Wattage: 11.85W Efficacy: 49lpw

Multiple luminaire data (footcandles)			
Distance from Luminaire	2' from wall		
	2' on center		
1'	31	28	31
2'	30	31	30
3'	17	18	17
4'	10	10	10
5'	6	6	6
6'	4	4	4
7'	2	2	2
8'	2	2	2
9'	1	1	1
10'	1	1	1

Multiple luminaire data (footcandles)			
Distance from Luminaire	2' from wall		
	3' on center		
1'	28	16	28
2'	25	22	25
3'	15	15	15
4'	8	9	8
5'	5	5	5
6'	3	4	3
7'	2	2	2
8'	2	2	2
9'	1	1	1
10'	1	1	1

Multiple luminaire data (footcandles)			
Distance from Luminaire	3' from wall		
	3' on center		
1'	8	7	8
2'	16	15	16
3'	13	14	13
4'	9	10	9
5'	6	7	6
6'	4	5	4
7'	3	3	3
8'	2	2	2
9'	2	2	2
10'	1	1	1



Example: Two luminaires located 3' from wall and spaced 3' on center, the illumination on the wall 3' down from ceiling will be 13fc beneath and 14fc between luminaires.





NORA LIGHTING, INC.
6505 Gayhart St.
Commerce, CA 90040
TEL 323.767.2600
FAX 323.722.3677
www.NoraLighting.com

DOMESTIC FACILITIES:
Cincinnati, OH
Dallas, TX
Denver, CO
Detroit, MI
Los Angeles, CA
Louisville, KY
Nashville, TN
New York, NY

INTERNATIONAL SALES:
6505 Gayhart St.
Commerce, CA 90040
TEL 323.767.2600
FAX 323.722.3677

The products shown in this catalog are covered by USA and International patents. Specifications subject to change without notice.