

# NORA<sup>®</sup>

## LIGHTING



## LINEAR / ACCENT

LIGHTBAR, UNDER CABINET, TAPE LIGHT, MINIATURE DOWNLIGHT, PUCK





# TABLE OF CONTENTS

Nora's family of products for linear, accent, or discrete general lighting is limited in application only by the lighting designer's imagination. These fixtures are compact in design and meet various energy requirements while achieving desired lighting effects. Lighting can be specified in a variety of applications including, under cabinet, niche, display, cabinet, shelf, closet, furniture, cove, under bar top, toe-kick or other applications where drama and accent lighting are used to define a space. Linear applications are solved with LED Silk SBC Lightbar, LED LEDUR Under Cabinet, LED Bravo FROST Linear, LED Tape Light, M1 miniature downlights and LED Puck Lights. Nora's linear and accent lighting is an excellent choice for today's green energy-efficient environment.

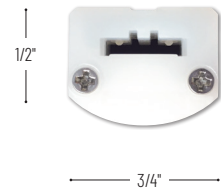
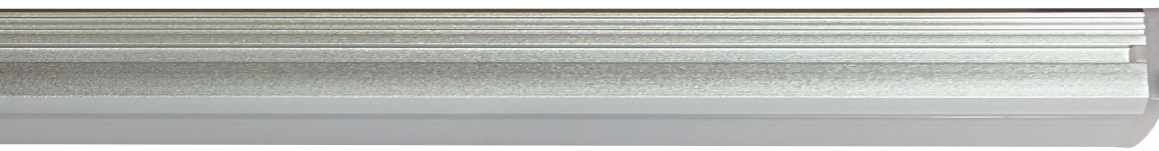
<b>SILK SBC LED LIGHTBAR.....</b>	<b>PG. 5</b>
24V high-output extruded aluminum low profile linear luminaire available five lengths from 6" to 48". 350 lumens and 5W per foot in 2700K, 3000K or 4000K.	
<b>LED LEDUR &amp; LEDUR TW.....</b>	<b>PG. 8</b>
120V LED edge-lit under cabinet available in 2700K, 3000K, 4000K or 5000K and Tunable White. Knockouts allow series to be direct wired with Romex® cable.	
<b>LED BRAVO FROST .....</b>	<b>PG. 9</b>
120V Linear luminaire available in 2700K, 3000K, 4000K or 5000K with adjustable 0° to 90° mounting brackets.	
<b>NULS LED LINEAR .....</b>	<b>PG. 10</b>
120V Economical linear luminaire available in four lengths from 10" to 45". 525 lumens and 5 watts per foot in 2700K, 3000K or 4000K.	
<b>LED RGB TAPE LIGHT .....</b>	<b>PG. 14</b>
12V or 24V Flexible damp label tape with RGB diode that allow the color to be changed at the press of a button.	
<b>LED RGBW TAPE LIGHT .....</b>	<b>PG. 16</b>
24V Flexible tape with a high-output RGB diode and dedicated high-output 30K diode that allow the color to be changed at the press of a button.	
<b>LED CCT COLOR TUNING TAPE LIGHT .....</b>	<b>PG. 18</b>
24V Flexible color tuning tape that allows the kelvin temperature to be changed from 2500K to 4500K.	
<b>LED COMFORT DIM TAPE LIGHT .....</b>	<b>PG. 20</b>
24V flexible Comfort Dim tape light that warms the color temperature from 3000K to 1800K as tape is dimmed.	
<b>LED HY-BRITE TAPE LIGHT .....</b>	<b>PG. 22</b>
24V Flexible Hy-Brite tape light produces 200+ lumens per foot at 90+ CRI.	
<b>LED HIGH OUTPUT TAPE LIGHT .....</b>	<b>PG. 22</b>
24V Flexible High Output tape light produces over 350 lumens per foot at 90+ CRI.	
<b>LED STANDARD ENCAPSULATED TAPE LIGHT .....</b>	<b>PG. 24</b>
12V or 24V Silicone encapsulated flexible tape produces 70 lumens per foot at 90+ CRI.	
<b>LED STANDARD TAPE LIGHT .....</b>	<b>PG. 26</b>
24V Non-Encapsulated flexible tape light produces 70 lumens per foot at 90+ CRI.	
<b>LED SIDE-LIT TAPE LIGHT .....</b>	<b>PG. 26</b>
24V Side illuminating flexible tape light produces 70 lumens per foot.	
<b>LED CONTINUOUS ROLL TAPE LIGHT .....</b>	<b>PG. 28</b>
24V flexible tape light in 20' or 100' continuous rolls with flip-type connectors. Available in Standard, Hy-Brite and High Output types.	
<b>M1 MINIATURE DOWNLIGHT .....</b>	<b>PG. 35</b>
12V Miniature 1" downlight, high performance, low energy, low profile.	
<b>JOSH LED PUCK LIGHT .....</b>	<b>PG. 37</b>
12V Surface or recessed mount, high performance, discrete light source.	
<b>LINKABLE LED PUCK LIGHT .....</b>	<b>PG. 38</b>
12V Surface or recessed mount, discrete light source can be linked together.	







# SILK SBC LED LIGHTBAR 24V 350LM/FT



Silk SBC Lengths: 12", 18", 24", 32"

The Silk SBC LED Lightbar eliminates the diode image to provide uniform reflectance of light without the hot spots generated by direct view mounted LEDs. Solid Bus Connectors (SBC) provide a rigid connection between bars, while the flush mount adjustable mounting brackets allow complete zero to 90-degree adjustment. Silk can be used in under cabinet, in cabinet, cove, display, and general commercial, retail and residential lighting applications.

**FEATURES:**

- Uniform reflectance with NO diode image
- 350 lumens and 5W per foot
- 2700K, 3000K and 4000K at 90+ CRI
- Five different lengths; 6", 12", 24", 36" and 48"
- Easy installation with flush mount 0°-90° adjustable mounting brackets (included)
- Solid Bus Connector (SBC) included
- Dimmable with dimmable power supply
- Aluminum and Black (special order) finish
- Can be connected up to 20' per run

**ELECTRICAL:**

**Voltage:** 24V  
**Lumens/Wattage Per Foot:** 350lm / 5W  
**Color Temperature:** 2700K, 3000K, 4000K  
**Color Rendering Index:** 90+ CRI  
**Dimming:** Specified by driver  
**Max Run Length:** 20'

**INCLUDED WITH EVERY LIGHTBAR:**

- (1) End to End Connector (NAL-800)
  - (2-3) Flat Mounting Clips (NAL-801)
  - (2-3) 0°-90° Adjustable Mounting Clips (NAL-809)
- 6", 12", 24" Silk Lightbars include two clips;  
 36" and 48" Silk Lightbars include three clips*

**MOUNTING:** Each Lightbar includes flat and adjustable mounting clips allowing aiming angles from 0° to 90°. Additional angled or 180° adjustable mounting clips are available, see accessories.

**FINISH:** Natural Aluminum or Black (special order)

**DRIVER:** Required — direct plug-in, Class II, and Dimmable Class II available.

**LISTINGS & WARRANTY:**

- cULus Listed for Dry Location
- ENERGY STAR certified
- 5-Year Limited Warranty



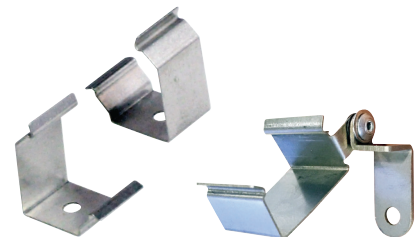
## SILK SBC LED LIGHTBAR

SERIES / LENGTH / WATT	CCT	FINISH
<b>NULB-806LED</b> 6" / 7W	<b>927</b> 2700K	<b>A</b> Aluminum
<b>NULB-812LED</b> 12" / 10W	<b>930</b> 3000K	<b>B</b> Black (special order)
<b>NULB-824LED</b> 24" / 13W	<b>940</b> 4000K	
<b>NULB-836LED</b> 36" / 16W		
<b>NULB-848LED</b> 48" / 16W		

*Example: **NULB-824LED930A**  
 24" Silk SBC Lightbar, 3000K / 90+CRI, Aluminum finish*



Included Solid Bus Connector (SBC) provides rigid connection between bars.

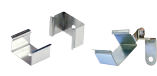


Mount with angled or adjustable brackets for flexibility. Two to three flat and 0° to 90° adjustable brackets included with each lightbar.



# SILK SBC LED LIGHTBAR ACCESSORIES


ACCESSORIES




**Mounting Clip**  
**NAL-801** Flat Mount

**NAL-809** 0-90°+ Adj. Mount


Flat and 0-90° Adjustable clips included with each lightbar.



**Mounting Clip**  
**NAL-845** 45° Mount




**Mounting Clip**  
**NAL-880** 0-180° Adj. Mount




**Interlink SBC Solid Bus Connector**  
**NAL-800**


Included with each lightbar



**Flex SBC Interconnection Cable**  
**NAL-802W** 2"  
**NAL-806W** 6"  
**NAL-812W** 12"  
**NAL-824W** 24"  
**NAL-872W** 72"




**SBC Power Line Cable**  
**NAL-808/24W** 24"  
**NAL-808/72W** 72"




**SBC Power Line Cable**  
**NAL-810/12W** 12"  
**NAL-810/72W** 72"

Open wire




**SBC Power Line Cable with Terminal Block**  
**NAL-812TBW** 12"  
**NAL-872TBW** 72"

14AWG-22AWG




**SBC Side Power Line Cable**  
**NAL-807W** 12"  
**NAL-807LW** Left 12"  
**NAL-807/72W** 72"  
**NAL-807/72LW** Left 72"




**SBC Side Power Line Cable**  
**NAL-811/12W** 12"  
**NAL-811/12LW** Left 12"  
**NAL-811/72W** 72"  
**NAL-811/72LW** Left 72"

Open wire




**2' Wire Raceway**  
**NATL-422** B or W

Field-cutttable plastic. Includes wire channel with double faced tape and cover. Available in Black or White.



**In-Line Motion Sensor**  
**NAL-830**

L: 2.5", W: 0.75", H: 0.75"  
12' Max activation distance; 20 second auto off; 120° detection zone; Max Load 4A



**In-Line Touch Dimmer Control**  
**NAL-855**

Tap once for 100%, twice for 75%, third time for 50%, fourth for 25% and fifth for off. No power failure memory.

DRIVERS & DRIVER ACCESSORIES



**NEXUS® All-in-One LED Driver and Dimmer**  
**NATL-SWEX100/24A** 24V 100W  
**NATL-SWEX/3FP** 3 Face Plates (Almond, Brown, Black)



**Direct Plug-In LED Driver**  
**NATL-524W** 24V 24W  
**NATL-545W** 24V 45W



**Direct Plug-In LED Driver**  
**NATL-545CPW** 24V 45W  
**NATL-596W** 24V 96W



**Class II Hardwire LED Driver**  
**NATL-5030HW** 24V 30W  
**NATL-5060HW** 24V 60W  
**NATL-5100HW** 24V 100W



**Class II Hardwire LED Driver 0-10V dimming**  
**NATL-5096-24-HWD10** 24V 90W



**Class II Hardwire LED Driver ELV dimming**  
**NATLED-5040HW** 24V 40W  
**NATLED-5075HW** 24V 75W



**Class II Hardwire LED Driver with Breakers, MLV dimming**  
**NMT-303/24C2D1** 120/24V 300W  
**NMT-303/24C2D2** 277/24V 300W



**Class II Hardwire LED Driver with Regulator, MLV dimming**  
**NMTD-60/24D** 24V 60W  
**NMTD-96/24D** 24V 96W



**Power Line Connector**  
**NATL-10** 10' Cable  
**NATL-30** 30' Cable



**5' Power Line Splitter**  
**NATL-302W**



**Low Voltage Splice Box**  
**NATL-415W**



**16AWG In-Wall Rated Wire**  
**NATL-W16-2-250** 16AWG 250'  
**NATL-W16-2-20** 16AWG 20'



**Terminal/Splitter Block**  
**NATL-407** 4-Way  
**NATL-408** 8-Way

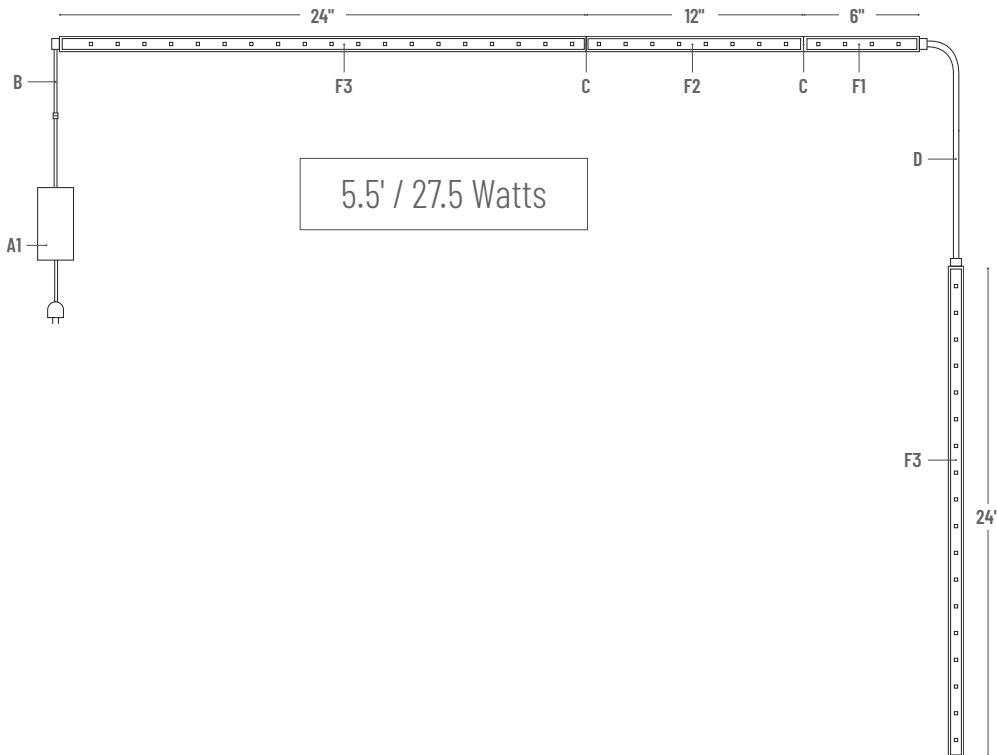
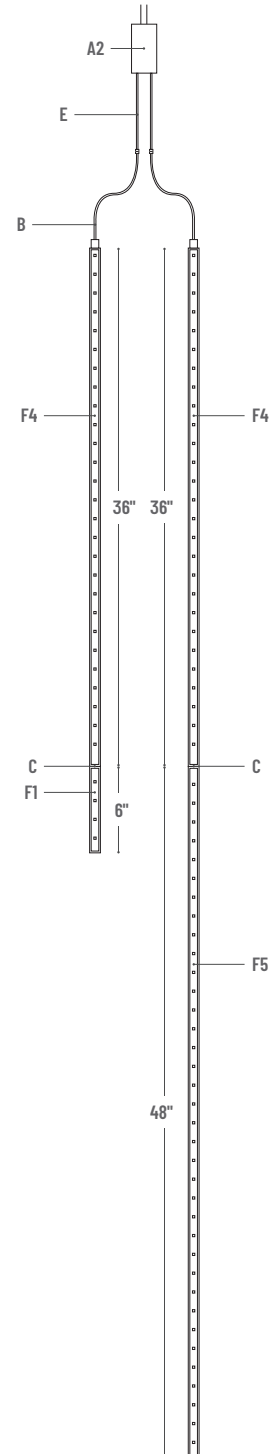
Note: See page 41 for more information about drivers.



# SILK SBC LED LIGHTBAR SAMPLE LAYOUTS

	DESCRIPTION	ITEM #
A1	45W Plug-In Driver	NATL-545W
A2	60W Class II Hardwire LED Driver	NATL-5060HW
B	90° Power Line Cable (12" Cable)	NAL-807W
	90° Power Line Cable (72" Cable)	NAL-807/72W
	Straight Power Line Cable (24" Cable)	NAL-808/24W
	Straight Power Line Cable (72" Cable)	NAL-808/72W
C	End-to-End Connector (included with each Lightbar)	NAL-800
D	2" Interconnection Cable	NAL-802W
	6" Interconnection Cable	NAL-806W
	12" Interconnection Cable	NAL-812W
	24" Interconnection Cable	NAL-824W
	72" Interconnection Cable	NAL-872W
E	10' Power Line Connector (one included with Class II HW drivers)	NALTL-10
	30' Power Line Connector	NALTL-30
F1	6" LED Silk SBC Lightbar	NULB-806LED
F2	12" LED Silk SBC Lightbar	NULB-812LED
F3	24" LED Silk SBC Lightbar	NULB-824LED
F4	36" LED Silk SBC Lightbar	NULB-836LED
F5	48" LED Silk SBC Lightbar	NULB-848LED

10.5' / 52.5 Watts

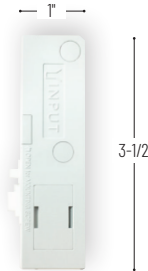


5.5' / 27.5 Watts



# LEDUR & LEDUR TW LED LINEAR 120V Edge-Lit Under Cabinet

DESIGNATED CCT OR TUNABLE WHITE



LEDUR & LEDUR TW Lengths:  
8", 11", 18", 22", 32", 42"

The LEDUR series of undercabinet lighting is now available in a Tunable White version that allows the end user to select between kelvin temperatures at time of installation with a three-position switch. LEDUR's built in LED driver, captive mounting screws, and large knockout plate in the back makes LEDUR easy to install. A heavily frosted lens diffuses the LED image and softens the light output.

**FEATURES:**

- Designated CCT or Tunable White switch
- 350+ Lumens per foot
- 7 Watts average per foot
- 90+ CRI
- Frosted Lens / No Diode Image
- Dimmable
- Built-in On/Off switch
- White or Bronze finishes
- Less than 1" in depth
- Each unit can be hardwired with Romex feed
- Each unit includes Romex™ Connector
- Easy to mount with captive screws
- Linkable up to 400 Watts

**ELECTRICAL:**

**Input Voltage:** 120V  
**Lumens / Wattage:** 350lm / 7W per foot  
**Color Temperature:** Warm White (2700K, 3000K) Cool White (4000K, 5000K)  
**CRI:** 90+ CRI  
**Maximum Run Length:** 400W max.  
**Dimming:** ELV

**MOUNTING:** Captive screws make mounting easy and quick.

**INCLUDED:** Captive screws for mounting, Romex connector, end-to-end connector and tool to remove electrical compartment cover.

**FINISHES:** Bronze (BZ) or White (W)

**LISTINGS & WARRANTY:**

- cULus Listed for Dry Location
- ENERGY STAR® Certified
- Can be used to comply with 2016 Title 24 Part 6 high efficacy LED light source requirements
- 5-Year Limited Warranty



**LEDUR LED LINEAR**

SERIES / LENGTH / WATT	CCT	FINISH
<b>NUD-8808</b> 8" / 4.5W	<b>/27</b> 2700K	<b>BZ</b>
<b>NUD-8811</b> 11" / 6.7W	<b>/30</b> 3000K	Bronze
<b>NUD-8818</b> 18" / 11W	<b>/40</b> 4000K	<b>WH</b>
<b>NUD-8822</b> 22" / 12W	4000K available in White finish only	White
<b>NUD-8832</b> 32-3/16" / 16W		
<b>NUD-8842</b> 42" / 20W		

Example: **NUD-8811/30WH**  
 11" LEDUR Under Cabinet, 3000K, White finish

**LEDUR TW LED LINEAR**

SERIES / LENGTH / WATT	CCT	FINISH
<b>NUDTW-8808</b> 8" / 4.9W	<b>(blank)</b> 2700K,	<b>/BZ</b>
<b>NUDTW-8811</b> 11" / 6.7W	3000K, 3500K	Bronze
<b>NUDTW-8818</b> 18" / 11W	<b>345</b> 3000K,	<b>/WH</b>
<b>NUDTW-8822</b> 22" / 12W	4000K, 5000K	White
<b>NUDTW-8832</b> 32-3/16" / 16W	Built-in switch changes between kelvin temps	
<b>NUDTW-8842</b> 42" / 20W		

Example: **NUDTW-8811/BZ**  
 11" LEDUR TW Under Cabinet, 2700K-3000K-3500K, Bronze

**LEDUR & LEDUR TW ACCESSORIES**

Note: Luminaire can be hardwired or with accessories to power run.



**Junction Box**

**NUA-802** B or W

Hardwire box used to power LEDUR Series using jumper cable or NUA-804 (Hardwire Connector).

L: 4" W: 1-3/4" H: 1"

Note: LEDUR Series can be direct wired into fixture.



**3-Wire Hardwire Connector**

**NUA-804** B or W

3-Wire grounded connector/cable used to hardwire fixture to NUA-802.

**3-Wire 72" Cord & Plug**

**NUA-805** B or W

Converts fixture from hardwire to direct plug-in units using connector pins on either end of fixture. Grounded plug.



**Jumper Cables**

**NUA-806** 6" B or W

**NUA-812** 12" B or W

**NUA-824** 24" B or W

**NUA-872** 72" B or W

Used to join fixtures together or to NUA-802.



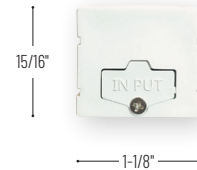
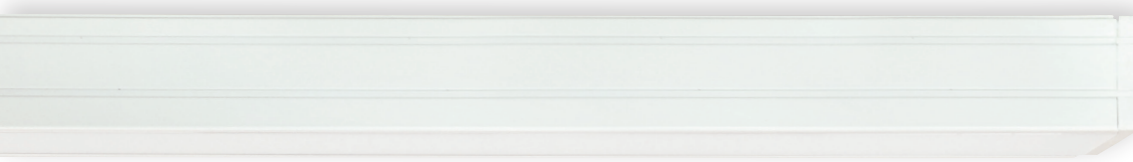
**End to End Connector**

**NUA-803**

Use to join fixtures seamlessly together. 3-Wire grounded connector (one included with fixture).



# BRAVO FROST LED LINEAR 120V



Bravo FROST Lengths: 12", 18", 24", 32"

Low profile LED Bravo FROST offers a diode image-free linear lighting solution for residential and commercial use. Less than 1" in depth, luminaires can be installed under cabinets, within shelves and displays cases, and architectural covers. An encapsulated 120V dimmable LED driver in each unit allows extended runs and easier installation. 0° to 90° adjustable mounting brackets are included.

**FEATURES:**

- Architectural extruded aluminum construction
- Symmetrical internal reflectors produce broad, even light
- Frosted lens eliminates LED diode image
- 120V linear system
- 7W produces 500 lumens per foot
- 90+ CRI
- 2700K, 3000K and 4000K
- Dimmable
- Linkable up to 300 Watts fixtures (about 43ft.)
- Less than 1" depth
- Bronze and White Finishes
- Self contained electronic driver in each unit
- 0° to 90° adjustable mounting brackets included
- Can be used to comply with 2016 Title 24 - part 6 High Efficacy LED light source requirements

**ELECTRICAL:**

**Input Voltage:** 120V  
**Lumens / Wattage:** 500lm / 7W per foot  
**Color Temperature:** Warm White (2700K, 3000K)  
 Cool White (4000K, 5000K)  
**CRI:** 90+CRI  
**Maximum Run Length:** 300W max.  
**Dimming:** ELV

**MOUNTING:** Adjustable mounting brackets 0°-90° (included).

**INCLUDED:** (2) adjustable mounting brackets and (1) end-to-end connector included with each fixture.

**FINISHES:** Bronze (BZ) or White (W)

**LISTINGS & WARRANTY:**

- cULus Listed for Dry Location
- ENERGY STAR® Certified
- Can be used to comply with 2016 Title 24 Part 6 high efficacy LED light source requirements
- 5-Year Limited Warranty



## BRAVO FROST LED LINEAR

SERIES / LENGTH / WATT	CCT	FINISH
<b>NUD-6812</b> 12" / 7W	<b>/27</b> 2700K	<b>BZ</b> Bronze
<b>NUD-6818</b> 18" / 10W	<b>/30</b> 3000K	<b>W</b> White
<b>NUD-6824</b> 24" / 13W	<b>/40</b> 4000K	
<b>NUD-6832</b> 32" / 16W	<b>/50</b> 5000K	
		<i>4000K &amp; 5000K are available in White finish only</i>

Example: **NUD-6812/30W**  
 12" Bravo FROST LED Linear, 3000K, White finish



90° Adjustability with included mounting bracket

## BRAVO FROST ACCESSORIES

Note: Each run requires junction box, hardwire connector or cord and plug to power run.



Junction Box with On/Off Switch  
**NUA-602** BZ or W

Used to power Bravo FROST using jumper cable or NUA-604 (Hardwire Connector).  
 L: 6-1/4" W: 3-5/8" H: 1"

Junction Box with On/Off Switch and Motion Sensor  
**NUA-6020CS** BZ or W

Consult factory for lead time.



2-Wire Hardwire Connector  
**NUA-604** B or W

2-Wire connector used to hardwire fixture to NUA-602 (Junction Box).

2-Wire 72" Cord and Plug  
**NUA-605** B or W

6' Grounded AC power cord to connect fixture to an outlet.



Jumper Cables  
**NUA-603** end to end BZ or W  
**NUA-606** 6" B or W  
**NUA-612** 12" B or W  
**NUA-624** 24" B or W  
**NUA-672** 72" B or W

Used to join two fixtures together or to NUA-602 (Junction Box).



Adjustable Mounting Brackets  
**NUA-609** set of 2 BZ or W

Set of two brackets used fixture between 0° to 90°. Two brackets are included with each fixture.

# NULS LED LINEAR 120V Linear Under Cabinet



NULS Lengths: 11", 21-3/16", 33", 44-13/16"

NULS LED is an economical way to provide linear lighting in undercabinet, cove, or general lighting applications. The 3-wire system meets most code requirements. Providing bright even illumination, the NULS LED is a perfect solution for energy efficient linear lighting.

**FEATURES:**

- Slim low profile construction
- Frosted lens eliminates LED diode image
- 120V linear system
- 5W produces 525 lumens per foot
- 80+ CRI
- 2700K, 3000K or 4000K
- Dimmable
- Mounting hardware and end-to-end connector included with each fixture
- DLC Listed
- cULus Listed

**ELECTRICAL:**

**Input Voltage:** 120V  
**Lumens:** 525lm per foot  
**Wattage:** 11" / 4W; 21" / 8W; 33" / 10W; 45" / 16W  
**Color Temperature:** 2700K, 3000K or 4000K  
**CRI:** 80+CRI  
**Maximum Run Length:** 120W  
**Dimming:** Triac or ELV

**MOUNTING:** Mounting hardware included with each unit. Luminaire has an input and output on opposite ends.

**INCLUDED:** (2) mounting brackets and (1) end-to-end connector included with each fixture.

**FINISHES:** White (W)

**LISTINGS & WARRANTY:**

- cULus Listed for Dry Location
- DLC Listed
- 5 Year Limited Warranty



**NULS LED LINEAR**

SERIES / LENGTH / WATT	CCT	FINISH
<b>NULS-LED10</b> 11" / 4W	<b>27</b> 2700K	<b>W</b> White
<b>NULS-LED21</b> 21-3/16" / 8W	<b>30</b> 3000K	
<b>NULS-LED33</b> 33" / 10W	<b>40</b> 4000K	
<b>NULS-LED45</b> 44-13/16" / 16W		

Example: **NULS-LED2130W**  
 21" NULS LED Linear, 3000K, White finish



Mounting brackets and end-to-end connector included with each fixture. (NULSA-MTGKIT)

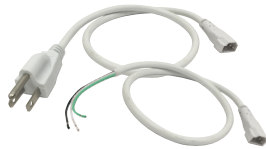
## NULS LED LINEAR ACCESSORIES

Note: Each run requires junction box, hardwire connector or cord and plug to power run.



Junction Box  
**NULSA-JBOX**

Junction box used to power NULS using jumper cable or NULSA-272-HWC (Hardwire Connector).  
 L: 4" W: 1-3/4" H: 1"



3-Wire 72" Hardwire Connector  
**NULSA-272-HWC**

72" 3-Wire connector used to hardwire fixture to NULSA-JBOX (Junction Box).

3-Wire 72" Cord and Plug  
**NULSA-106**

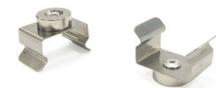
72" Grounded AC power cord to connect fixture to an outlet.



Jumper Cables

<b>NULSA-206</b>	6"
<b>NULSA-212</b>	12"
<b>NULSA-218</b>	18"
<b>NULSA-206-90</b>	6" 90°
<b>NULSA-212-90</b>	12" 90°
<b>NULSA-218-90</b>	18" 90°

Used to join two fixtures together or to junction box. Can be joined together to make custom lengths.



Magnetic Mounting Brackets

**NULSA-MAGMC** set of 2

For easy mounting to metal shelves, cabinets or surface.

Hardware Kit  
**NULSA-MTGKIT**

Included with each fixture.











# Ten Styles of LED Tape Light

LIGHTING DESIGN ONLY LIMITED BY YOUR IMAGINATION

Nora Lighting offers one of the largest selections of LED tape light in the industry. The selection includes a wide variety of outputs and a large selection of installation accessories for large and small jobs. LED tape's small profile, even light distribution and low cost make it the specifier's and lighting designer's choice for lighting applications from A to Z.

## FEATURES

- Each tape roll includes power line connector
- Available in 10' (HO, RGBW), 16', 20' and 100' rolls
- No soldering / cuttable / 3M™ adhesive back
- Available in 90+ CRI
- Each tape roll consists of tape separable every 12" (except Comfort Dim and Continuous Roll, which are cuttable only)
- Available in 4", 6" (RGB + RGBW) and 12" sections (except Comfort Dim and Continuous Roll, which are available in rolls only)



## SINGLE COLOR

1. STANDARD (SILICONE ENCAPSULATED)  
NUTP1 SERIES 24V · NUTP4 SERIES 12V  
70 LUMENS / 1.5W PER FOOT
2. STANDARD (NON-ENCAPSULATED)  
NUTP7 SERIES 24V · 70 LUMENS / 1.65W PER FOOT
3. SIDE-LIT  
NUTP9 SERIES 24V · 70 LUMENS / 1.5W PER FOOT
4. HY-BRITE  
NUTP5 SERIES 24V · 200 LUMENS / 2.7W PER FOOT
5. HIGH OUTPUT  
NUTP8 SERIES 24V · 350 LUMENS / 4.2W PER FOOT
6. CONTINUOUS ROLL  
NUTP71 SERIES 24V · 80 LUMENS / 1.3W PER FOOT  
NUTP51 SERIES 24V · 210 LUMENS / 2.7W PER FOOT  
NUTP81 SERIES 24V · 310 LUMENS / 4.3W PER FOOT

## MULTI COLOR

7. COMFORT DIM  
NUTP12 SERIES 24V · 16' ROLL ONLY  
170 LUMENS / 2.7W PER FOOT
8. RGB COLOR CHANGING  
NUTP3 SERIES 24V · NUTP6 SERIES 12V  
SILICONE ENCAPSULATED
9. RGBW COLOR CHANGING + WHITE  
NUTP11 SERIES 24V · SEPARATE 30K DIODE
10. CCT COLOR TUNING  
NUTP10 SERIES 24V · 2500K TO 4500K



# RGB COLOR CHANGING ENCAPSULATED ED TAPE LIGHT 12V or 24V

CREATES UP TO 16 COLORS – PROGRAM A SINGLE STATIONARY COLOR OR MULTIPLE TRANSITIONING COLORS!



RGB LED Tape Light has the colors Red, Green, and Blue in every LED diode. Several colors of visual spectrum can be selected and programmed with a 120° viewing angle. A stationary color, automatic changing colors and brightness can be selected and changed at anytime with the press of a button. Low profile RGB LED Tape Light is ideal for use in show exhibition lighting, architectural enhancements, bars, theaters, store fronts, or anywhere you need a punch of color.

Cuttable every 3" (12V) or 6" (24V) at marked intervals

Tape Width: 9/16"  
Tape Depth: 1/16"  
Lengths: 16' Roll, 12" Section, 6" Section

**FEATURES:**

- 12V or 24V / 4-wire systems
- Separable every 12" - easily disconnected and connected without soldering
- Tape is silicone encapsulated for easy maintenance and durability
- Field cuttable every 3" using 12V and 6" using 24V
- 40W per roll - 2.5W per foot
- Primary Colors: Red, Green, and Blue
- Several colors or automated changing of visual spectrum can be selected and programmed
- Synchronizable
- Three changeable brightness levels with hand held remote
- 120° Beam Angle
- Easy to install with pre-applied 3M™ tape or accessories

**ELECTRICAL:**

**Voltage:** 12V or 24V  
**Wattage:** 2.5W per foot  
**Light Source:** 12 LEDs per foot  
**Color Temperature:** Color Changing RGB  
**Maximum Run Length:** 40' (24V) / 24' (12V)

**INCLUDED WITH TAPE LIGHT ROLL:**

- (1) 16' Tape Light Roll
- (1) 12" power line interconnector
- (15) clear acrylic clips

**DRIVER:** Required — direct plug-in or Class II available.

**CONTROLLER:** Required for each run. May be linked together for color synchronization.

**LISTINGS & WARRANTY:**

- cULus Listed for Damp Location
- 3 Year Limited Warranty



**RGB COLOR CHANGING LED TAPE LIGHT**

VOLT	SERIES / LENGTH	CCT
24V	NUTP3-W16LEDRGB 16' Roll	Color Changing RGB
	NUTP3-WLEDRGB/12 12" Section	
	NUTP3-WLEDRGB/6 6" Section	
12V	NUTP6-16LEDRGB 16' Roll	Color Changing RGB
	NUTP6-LEDRGB/12 12" Section	
	NUTP6-LEDRGB/6 4" Section	

Example: **NUTP3-W16LEDRGB** - 24V RGB LED Tape Light, 16' roll

16' Tape Rolls include sixteen 12" sections.  
12" and 6" Tape sections contain male/female ends.

**RGB COLOR CHANGING CONTROLLERS** *Note: Each RGB system requires tape, controller and driver.*



**RGB 2.4G Full Color RF Controller and Hand Held Remote**  
**NARGB-860/61**  
12V/24V controller is required for each RGB LED Tape Light run. Installs between the driver and the power line interconnector. The controller can be used to toggle between colors or changing modes.



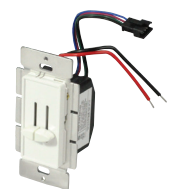
**RGB Controller and Hand Held Remote (sold separately)**  
**NARGB-760** 24V Controller  
**NARGB-765** 12V Controller  
**NARGB-761** Hand Held Remote  
360W Max. A controller is required for each RGB LED Tape Light run. Installs between the driver and the power line interconnector. The controller can be used to toggle between colors or changing modes.



**DMX Decoder for RGB Tape Light**  
**NATL-DMX-4C**  
20A Max. A DMX decoder or RGB controller is required for each RGB LED Tape Light run. Installs between the driver and the power line interconnector. The decoder requires a DMX controller (by others) to operate.



**RGB Touch Pad Wall Controller**  
**NARGB-866**  
12V - 144W max or 24V - 288W max. Includes mounting back box. Requires driver.  
Local control of RGB, select static colors, 4 changing modes, on/off with memory and dimming.



**Spectrum Wall Slide Control**  
**NARGB-875W**  
Dual-Slide controller for CCT tape or RGB tape. One slide control controls color and the other controls brightness with a positive off. Installs between driver and tape.



Note: Each RGB system requires tape, controller and driver.

TAPE LIGHT ACCESSORIES



"Y" Splitter Cables  
**NARGB-700W**



"X" Splitter Cable  
**NARGB-701W**



Interconnection Cable  
**NARGB-702W** 2" Cable  
**NARGB-706W** 6" Cable  
**NARGB-718W** 18" Cable  
**NARGB-736W** 36" Cable  
**NARGB-772W** 72" Cable



Power Line Interconnector  
**NARGB-710W** 12" Cable



Controller Power Line Connector  
**NARGB-762** 10'  
**NARGB-763** 30'



Shrink Wrap Tube  
**NATL-400** Pack of 5



End Cap  
**NATL-403** Black  
**NATL-403W** White



Clear Acrylic Mounting Clips  
**NATHR-685** Pack of 15



2" Wire Raceway  
**NATL-422B** black  
**NATL-422W** white



Clips for Wire, White Plastic  
**NATL-404W** J-Clip 10/pk  
**NATL-405W** Over Wire 10/pk  
**NATL-406W** Clip 10/pk

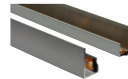
CHANNELS



4' Shallow Channel w/ Lens  
**NATL-C23A** aluminum w/wing  
**NATL-C24A** aluminum  
**NATL-C24B** black  
**NATL-C24W** white



4' Deep Channel w/ Lens  
**NATL-C25A** aluminum w/wing  
**NATL-C26A** aluminum  
**NATL-C26B** black  
**NATL-C26W** white



4' J-Style Channel  
**NATL-C27A** aluminum



4' Corner Channel w/ Lens  
**NATL-C28A** aluminum  
**NATL-C28B** black  
**NATL-C28W** white



4' Aluminum Channel, Lensless  
**NATHR-680**

DRIVERS & DRIVER ACCESSORIES



Direct Plug-In LED Driver  
**NAPK-524/12** 12V 24W  
**NAPK-524W/12** 12V 24W  
**NATL-524W** 24V 24W  
**NATL-545W** 24V 45W



Direct Plug-In LED Driver  
**NAPK-550/12** 12V 50W  
**NATL-545CPW** 24V 45W  
**NATL-596W** 24V 96W



Class II Hardwire LED Driver  
**NAPK-5030HW/12** 12V 30W  
**NAPK-5060HW/12** 12V 60W  
**NATL-5030HW** 24V 30W  
**NATL-5060HW** 24V 60W  
**NATL-5100HW** 24V 100W



Class II Hardwire LED Driver  
**NATL-5060-12-HWD10** 12V 60W  
**NATL-5096-24-HWD10** 24V 96W



Class II Hardwire LED Driver  
**NAPKED-5040HW** 12V 40W  
**NAPKED-5060HW** 12V 60W  
**NATLED-5040HW** 24V 40W  
**NATLED-5075HW** 24V 75W



Class II Hardwire LED Driver with Breakers  
**NMT-244/12C2D1** 120/12V 240W  
**NMT-244/12C2D2** 277/12V 240W  
**NMT-303/24C2D1** 120/24V 300W  
**NMT-303/24C2D2** 277/24V 300W



Class II Hardwire LED Driver with Regulator  
**NMTD-40/12D** 12V 40W  
**NMTD-60/12D** 12V 60W  
**NMTD-60/24D** 24V 60W  
**NMTD-96/24D** 24V 96W



Power Line Connector  
**NATL-10** 10' Cable  
**NATL-30** 30' Cable



5' Power Line Splitter  
**NATL-302W**



Low Voltage Splice Box  
**NATL-415W**



16AWG In-Wall Rated Wire  
**NATL-W16-2-250** 16AWG 250'  
**NATL-W16-2-20** 16AWG 20'



Terminal/Splitter Block  
**NATL-407** 4-Way  
**NATL-408** 8-Way

Notes:

Each RGB Tape runs requires Tape, Driver and Controller. Dimmable drivers are only for powering RGB, RGBW and CCT tape. Dimming is controlled by Spectrum Wall Control, Controller or DMX Decoder, see page 14.

See page 41 for more information about drivers.

# RGBW COLOR CHANGING LED TAPE LIGHT 24V 5W/FT

RGB COLOR CHANGING TAPE PLUS A SEPARATE 30K DIODE FOR QUALITY USABLE WHITE LIGHT!



The RGBW tape consumes 5 watts per foot with a bright 2.5 watts dedicated to the 30K chip and 2.5 watts dedicated to the RGB chip. The RGBW offers the flexibility to create pastel colors using the RGB at the same time as the white, as well as producing a high quality white light when needed, and the ability to change to RGB and color changing when the mode or application changes. The 5-wire system has a dedicated RF controller allowing flexibility during installation and a hand-held control with multiple functions.

Cuttable every 6" at marked intervals

Dedicated 30K diode

Tape Width: 9/16"  
Tape Depth: 1/8"  
Lengths: 10' Roll, 12" Section, 6" Section

**FEATURES:**

- 350 Lumens per foot
- 90+ CRI
- 50W per roll - 5W per foot
- 24V DC, 5-wire System
- Color Changing tape with a dedicated 3000K diode
- Synchronizable
- 120° Beam Angle
- No soldering or additional wiring required
- Separable every 12" - easily disconnected and connected without soldering
- Field cuttable every 6" or 6 LEDs
- 10' maximum run length
- Dimmable with dimmable power supply
- Easy to install with pre-applied 3M™ tape or accessories

**ELECTRICAL:**

**Voltage:** 24V DC input  
**Wattage:** 5W per foot  
**Light Source:** 12 Dual LEDs Per Foot  
**Color Temperature:** Color Changing RGB with dedicated 30K diode  
**Maximum Run Length:** 10'

**INCLUDED WITH TAPE LIGHT ROLL:**

- (1) 10' Tape Light Roll
- (1) 12" power line interconnector
- (15) clear acrylic clips

**DRIVER:** Required — direct plug-in or Class II available.

**CONTROLLER:** Required for each run. May be linked together for color synchronization.

**LISTINGS & WARRANTY:**

- cULus Listed for Damp Location
- IP44 Rated
- 3 Year Limited Warranty



## RGBW COLOR CHANGING LED TAPE LIGHT

SERIES / LENGTH	CCT
<b>NUTP11-W10RGBW</b> 10' Roll	Color Changing RGB with dedicated 30K diode
<b>NUTP11-WR6BW/12</b> 12" Section	
<b>NUTP11-WR6BW/6</b> 6" Section	

Example: **NUTP11-W10RGBW**  
RGBW Color Changing LED Tape Light, 10' Roll

10' Tape Rolls include ten 12" sections.  
12" and 6" Tape sections contain male/female ends.

### LIGHTING TIP

RGBW LED Tape allows the user to select a beautiful bright 30K light for everyday use and then choose colors for special occasions.

## RGBW COLOR CHANGING CONTROLLERS *Note: Each RGBW system requires tape, controller and driver.*



RGBW Full Color RF Controller  
**NARGBW-965**

360W Max. A controller is required for each RGBW LED Tape Light run. Installs between the driver and the power line interconnector. The controller can be used to toggle between colors or changing modes.



RGBW Controller Hand Held Remote  
**NARGBW-967**

Used to program RGBW tape light to certain color configurations. Can be used up to 22' from RGBW controller, must be in direct view.

**Key Selections:** Brightness, Colors, Color Changing - Flash, Strobe, Fade and Smooth Fade, On/Off



DMX Decoder for RGBW Tape Light  
**NATL-DMX-4C/RGBW**

20A Max. A DMX decoder or RGBW controller is required for each RGBW LED Tape Light run. Installs between the driver and the power line interconnector. The decoder requires a DMX controller (by others) to operate.



RGBW Touch Pad Wall Controller  
**NARGBW-869**

24V 16A max. Includes mounting back box. Requires driver.

Local control of RGBW, select static colors, 4 changing modes, 3000K LED on/off, ALL LEDs on/off with memory and dimming.

Note: Each RGBW system requires tape, controller and driver.

TAPE LIGHT ACCESSORIES



**"Y" Splitter Cables**  
**NARGBW-900W**



**"X" Splitter Cable**  
**NARGBW-901W**



**Interconnection Cable**  
**NARGBW-902W** 2" Cable  
**NARGBW-906W** 6" Cable  
**NARGBW-918W** 18" Cable  
**NARGBW-936W** 36" Cable  
**NARGBW-972W** 72" Cable



**Power Line Interconnector**  
**NARGBW-909W** 12" Cable



**Controller Power Line Connector**  
**NARGBW-962** 10'  
**NARGBW-963** 30'



**Shrink Wrap Tube**  
**NATL-400** Pack of 5



**End Cap**  
**NATL-403** Black  
**NATL-403W** White



**Clear Acrylic Mounting Clips**  
**NATHR-685** Pack of 15



**2" Wire Raceway**  
**NATL-422B** black  
**NATL-422W** white



**Clips for Wire, White Plastic**  
**NATL-404W** J-Clip 10/pk  
**NATL-405W** Over Wire 10/pk  
**NATL-406W** Clip 10/pk

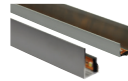
CHANNELS



**4' Shallow Channel w/ Lens**  
**NATL-C23A** aluminum w/wing  
**NATL-C24A** aluminum  
**NATL-C24B** black  
**NATL-C24W** white



**4' Deep Channel w/ Lens**  
**NATL-C25A** aluminum w/wing  
**NATL-C26A** aluminum  
**NATL-C26B** black  
**NATL-C26W** white



**4' J-Style Channel**  
**NATL-C27A** aluminum



**4' Corner Channel w/ Lens**  
**NATL-C28A** aluminum  
**NATL-C28B** black  
**NATL-C28W** white



**4' Aluminum Channel, Lensless**  
**NATHR-680**

DRIVERS & DRIVER ACCESSORIES



**Direct Plug-In LED Driver**  
**NATL-524W** 24V 24W  
**NATL-545W** 24V 45W



**Direct Plug-In LED Driver**  
**NATL-545CPW** 24V 45W  
**NATL-596W** 24V 96W



**Class II Hardwire LED Driver**  
**NATL-5030HW** 24V 30W  
**NATL-5060HW** 24V 60W  
**NATL-5100HW** 24V 100W



**Class II Hardwire LED Driver**  
**NATL-5096-24-HWD10** 24V 96W



**Class II Hardwire LED Driver**  
**NATLED-5040HW** 24V 40W  
**NATLED-5075HW** 24V 75W



**Class II Hardwire LED Driver with Breakers**  
**NMT-303/24C2D1** 120/24V 300W  
**NMT-303/24C2D2** 277/24V 300W



**Class II Hardwire LED Driver with Regulator**  
**NMTD-60/24D** 24V 60W  
**NMTD-96/24D** 24V 96W



**Power Line Connector**  
**NATL-10** 10' Cable  
**NATL-30** 30' Cable



**5" Power Line Splitter**  
**NATL-302W**



**Low Voltage Splice Box**  
**NATL-415W**



**16AWG In-Wall Rated Wire**  
**NATL-W16-2-250** 16AWG 250'  
**NATL-W16-2-20** 16AWG 20'



**Terminal/Splitter Block**  
**NATL-407** 4-Way  
**NATL-408** 8-Way

Notes:

Each RGBW Tape runs requires Tape, Driver and Controller. Dimmable drivers are only for powering RGB, RGBW and CCT tape. Dimming is controlled by Controller or DMX Decoder, see page 16.

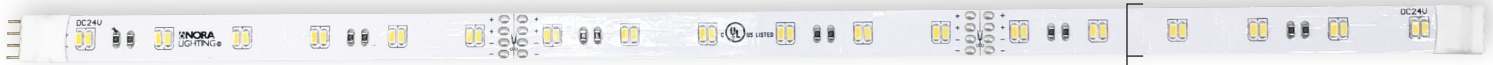
See page 41 for more information about drivers.



# CCT COLOR TUNING LED TAPE LIGHT 24V 2.5W/FT

2500K warm - 4500K cool

SELECT THE COLOR TEMPERATURE AND INTENSITY OF LIGHT FROM WARM 2500K TO COOL 4500K



Different applications require different Kelvin temperatures to enhance various color spectrums. Use 2500K for a warm red enhancing application and 4500K for a cool, brighter white enhancing application. The RF controller is operated with a remote or controller that lets the end user select the temperature and intensity as the application or mood changes as well as having the option to set optional automatic changing modes.

Cutttable every 4" at marked intervals

Tape Width: 7/16"  
Tape Depth: 1/16"  
Lengths: 16' Roll, 12" Section, 4" Section

**FEATURES:**

- 192 LEDs / 40W per roll - 12 LEDs / 2.5W per ft.
- 24V DC / 4-wire system
- Change Kelvin temperature from 2500K-4500K with hand held remote, wall controller or Spectrum
- Program temperature and intensity or set optional automatic changing modes
- Synchronizable
- 120° Beam Angle
- No soldering or additional wiring required
- Separable every 12" - easily disconnected and connected without soldering
- Field cuttable every 4" or 6 LEDs
- 16' Maximum run length
- Dimmable with dimmable power supply
- Easy to install with pre-applied 3M™ tape or accessories

**ELECTRICAL:**

**Voltage:** 24V  
**Wattage:** 2.5W per foot  
**Light Source:** 18 LEDs per foot  
**Color Temperature:** Color Tuning 2500K-4500K  
**Maximum Run Length:** 16'

**INCLUDED WITH TAPE LIGHT ROLL:**

- (1) 16' Tape Light Roll
- (1) 12" power line interconnector
- (15) clear acrylic clips

**DRIVER:** Required – direct plug-in or Class II available.

**CONTROLLER:** Required for each run. May be linked together for color synchronization.

**LISTINGS & WARRANTY:**

- cULus Listed for Damp Location
- IP44 Rated
- 3 Year Limited Warranty



**CCT COLOR TUNING 24V LED TAPE LIGHT**

SERIES / LENGTH	CCT
NUTP10-W16CCT 16' Roll	Color Tuning 2500K-4500K
NUTP10-WCCT/12 12" Section	
NUTP10-WCCT/4 4" Section	

Example: **NUTP10-W16CCT**  
24V Color Tuning (2500K-4500K) LED Tape Light, 16' roll

16' Tape Rolls include sixteen 12" sections.  
12" and 4" Tape sections contain male/female ends.

**CCT COLOR TUNING CONTROLLERS** *Note: Each CCT system requires tape, controller and driver.*



CCT Color Tuning Controller (25K-45K)  
**NACCT-865**  
CCT Color Tuning Hand Held Remote  
**NACCT-867**



CCT Touch Pad Wall Controller  
**NACCT-868**  
**Includes** Mounting back box.  
**Requires:** Driver  
Local control of CCT, on/off with memory and dimming.



Spectrum Wall Slide Control  
**NARGB-875W**  
Dual-Slide controller for CCT tape or RGB tape. One slide control controls color and the other controls brightness with a positive off. Installs between driver and tape.

Note: Each CCT system requires tape, controller and driver.

TAPE LIGHT ACCESSORIES



"Y" Splitter Cables  
**NARGB-700W**



"X" Splitter Cable  
**NARGB-701W**



Interconnection Cable  
**NARGB-702W** 2" Cable  
**NARGB-706W** 6" Cable  
**NARGB-718W** 18" Cable  
**NARGB-736W** 36" Cable  
**NARGB-772W** 72" Cable



Power Line Interconnector  
**NARGB-710W** 12" Cable



Controller Power Line Connector  
**NARGB-762** 10'  
**NARGB-763** 30'



Shrink Wrap Tube  
**NATL-400** Pack of 5



End Cap  
**NATL-403** Black  
**NATL-403W** White



Clear Acrylic Mounting Clips  
**NATHR-685** Pack of 15



2 Wire Raceway  
**NATL-422B** black  
**NATL-422W** white



Clips for Wire, White Plastic  
**NATL-404W** J-Clip 10/pk  
**NATL-405W** Over Wire 10/pk  
**NATL-406W** Clip 10/pk

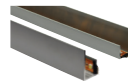
CHANNELS



4' Shallow Channel w/ Lens  
**NATL-C23A** aluminum w/wing  
**NATL-C24A** aluminum  
**NATL-C24B** black  
**NATL-C24W** white



4' Deep Channel w/ Lens  
**NATL-C25A** aluminum w/wing  
**NATL-C26A** aluminum  
**NATL-C26B** black  
**NATL-C26W** white



4' J-Style Channel  
**NATL-C27A** aluminum



4' Corner Channel w/ Lens  
**NATL-C28A** aluminum  
**NATL-C28B** black  
**NATL-C28W** white



4' Aluminum Channel, Lensless  
**NATHR-680**

DRIVERS & DRIVER ACCESSORIES



Direct Plug-In LED Driver  
**NATL-524W** 24V 24W  
**NATL-545W** 24V 45W



Direct Plug-In LED Driver  
**NATL-545CPW** 24V 45W  
**NATL-596W** 24V 96W



Class II Hardwire LED Driver  
**NATL-5030HW** 24V 30W  
**NATL-5060HW** 24V 60W  
**NATL-5100HW** 24V 100W



Class II Hardwire LED Driver  
**NATL-5096-24-HWD10** 24V 96W



Class II Hardwire LED Driver  
**NATLED-5040HW** 24V 40W  
**NATLED-5075HW** 24V 75W



Class II Hardwire LED Driver with Breakers  
**NMT-303/24C2D1** 120/24V 300W  
**NMT-303/24C2D2** 277/24V 300W



Class II Hardwire LED Driver with Regulator  
**NMTD-60/24D** 24V 60W  
**NMTD-96/24D** 24V 96W



Power Line Connector  
**NATL-10** 10' Cable  
**NATL-30** 30' Cable



5' Power Line Splitter  
**NATL-302W**



Low Voltage Splice Box  
**NATL-415W**



16AWG In-Wall Rated Wire  
**NATL-W16-2-250** 16AWG 250'  
**NATL-W16-2-20** 16AWG 20'



Terminal/Splicer Block  
**NATL-407** 4-Way  
**NATL-408** 8-Way

Notes:

Each CCT Tape run requires Tape, controller and driver.  
Dimmable drivers are only for powering RGB, RGBW and CCT tape. Dimming is controlled by Spectrum Wall Control, Controller or DMX Decoder, see page 18.  
See page 41 for more information about drivers.

# COMFORT DIM LED TAPE LIGHT 24V 170LM/FT

Bright 3000K dims to Warm 1800K

COMFORT DIM TECHNOLOGY WARMS THE COLOR TEMPERATURE WHILE BEING DIMMED



Comfort Dim technology tunes the color temperature as the luminaire is dimmed. Beginning at a bright 3000K, as the tape light is dimmed the color temperature warms to 1800K. LED Tape Light is a perfect solution for your LED linear lighting needs. This energy efficient and very low profile LED Tape is great for use in cove lighting, architectural enhancements, under cabinet or many more discreet locations.

Cutttable every 2" at marked intervals

Tape Width: 7/16"  
Tape Depth: 1/16"  
Lengths: 16' Roll

**FEATURES:**

- 24V systems
- Field cuttable every 2"; reconnect with interconnection cables
- 39W per roll - 2.44W per foot
- Warms the kelvin temperature from 3000K to 1800K when dimmed
- No soldering or additional wiring required
- 16' maximum run length
- Easy to install with pre-applied 3M™ tape or accessories
- Dimmable with Dimmable Magnetic Low Voltage Driver

**ELECTRICAL:**

**Voltage:** 24V  
**Wattage:** 2.44W per foot  
**Lumens:** 170lm per foot  
**Color Temperature:** Comfort Dim color tunes the temperature from a bright 3000K, to a romantic and comfortable 1800K  
**Color Rendering Index:** 90  
**Maximum Run Length:** 16'  
**Dimming:** Magnetic Low Voltage

**INCLUDED WITH TAPE LIGHT ROLL:**

- (1) 16' Tape Light Roll
- (1) 12" power line interconnector
- (15) clear acrylic clips

**DRIVER:** Requires magnetic low voltage driver to be used with a magnetic low voltage dimmer.

**LISTINGS & WARRANTY:**

- cULus Listed for Damp Location
- 3 Year Limited Warranty



## COMFORT DIM 24V LED TAPE LIGHT

SERIES / LENGTH	CCT
<b>NUTP12-W16LEDCD</b> 16' Roll	Comfort Dim 3000K-1800K

Example: **NUTP12-W16LEDCD**  
24V Comfort Dim LED Tape Light, 16' roll





TAPE LIGHT ACCESSORIES



Power Line Interconnector  
**NATLCD-210** 12"



Interconnection Cables  
**NATLCD-203** 3"  
**NATLCD-206** 6"  
**NATLCD-224** 24"  
**NATLCD-248** 48"  
**NATLCD-272** 72"



Clear Acrylic Mounting Clips  
**NATL-401** Pack of 15



2' Wire Raceway  
**NATL-422B** black  
**NATL-422W** white



Clips for Wire, White Plastic  
**NATL-404W** J-Clip 10/pk  
**NATL-405W** Over Wire 10/pk  
**NATL-406W** Clip 10/pk

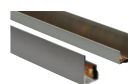
CHANNELS



4' Shallow Channel w/ Lens  
**NATL-C23A** aluminum w/wing  
**NATL-C24A** aluminum  
**NATL-C24B** black  
**NATL-C24W** white



4' Deep Channel w/ Lens  
**NATL-C25A** aluminum w/wing  
**NATL-C26A** aluminum  
**NATL-C26B** black  
**NATL-C26W** white



4' J-Style Channel  
**NATL-C27A** aluminum



4' Corner Channel w/ Lens  
**NATL-C28A** aluminum  
**NATL-C28B** black  
**NATL-C28W** white



4' Aluminum Channel, Lensless  
**NATHR-680**

DRIVERS & DRIVER ACCESSORIES



Class II Hardwire LED Driver with Breakers, MLV dimming  
**NMT-303/24C2D1** 120/24V 300W  
**NMT-303/24C2D2** 277/24V 300W



Class II Hardwire LED Driver with Regulator, MLV dimming  
**NMTD-60/24D** 24V 60W  
**NMTD-96/24D** 24V 96W



Power Line Connector  
**NATL-10** 10' Cable  
**NATL-30** 30' Cable



5' Power Line Splitter  
**NATL-302W**



Low Voltage Splice Box  
**NATL-415W**



16AWG In-Wall Rated Wire  
**NATL-W16-2-250** 16AWG 250'  
**NATL-W16-2-20** 16AWG 20'



Terminal/Splitter Block  
**NATL-407** 4-Way  
**NATL-408** 8-Way

Notes:  
Each Comfort Dim Tape run requires a magnetic driver and dimmer.  
See page 41 for more information about drivers.

# HY-BRITE LED TAPE LIGHT 24V 200LM/FT



**FEATURES:**

- 200+ Lumens per foot
- 90+ CRI
- 43.2W per roll - 2.7W per foot
- 24V DC System
- Available in three color outputs: Cool White (4200K), Warm White (3000K), Warm White (2700K)
- 120° Beam Angle
- No soldering or additional wiring required
- Separable every 12" - easily disconnected and connected without soldering
- Field cuttable every 4" or 4 LEDs
- 32' Maximum run length
- Dimmable with dimmable power supply
- Easy to install with pre-applied 3M™ tape or accessories

**ELECTRICAL:**

**Voltage:** 24V  
**Lumens / Wattage:** 200lm / 2.7W per foot  
**Light Source:** 12 Hy-Brite LEDs per foot  
**Color Rendering Index:** 90+ CRI  
**Color Temperature:** 2700K, 3000K or 4200K  
**Maximum Run Length:** 32'

**INCLUDED WITH TAPE LIGHT ROLL:**

(1) 16' Tape Light Roll  
 (1) 9" power line interconnector  
 (15) clear acrylic clips

**DRIVER:** Required — direct plug-in, Class II, and Dimmable Class II available.

**LISTINGS & WARRANTY:**

- cULus Listed for Damp Location
- IP44 Rated
- 3 Year Limited Warranty



Cuttable every 4" at marked intervals

Tape Width: 9/16"  
 Tape Depth: 1/8"  
 Lengths: 16' Roll, 12" Section, 4" Section

HY-BRITE 24V LED TAPE LIGHT		CCT
<b>SERIES / LENGTH</b>		
<b>NUTP5-W16LED(CCT)</b>	16' Roll	<b>927</b> 2700K
<b>NUTP5-WLED(CCT)/12</b>	12" Section	<b>930</b> 3000K
<b>NUTP5-WLED(CCT)/4</b>	4" Section	<b>942</b> 4200K

*Example: NUTP5-WLED942/4  
 24V Hy-Brite LED Tape Light, 4" Section, 4200K*

16' Tape Rolls include sixteen 12" sections.  
 12" and 4" Tape sections contain male/female ends.

# HIGH OUTPUT LED TAPE LIGHT 24V 350LM/FT



**FEATURES:**

- 350 Lumens per foot
- 90+ CRI
- 180 LEDs / 42W per roll - 18 LEDs / 4.2W per ft.
- 24V DC System
- Available in 7 colors: Blue, Green, Red, Yellow, Cool White (4200K), Warm White (3000K), Warm White (2700K)
- 120° Beam Angle
- No soldering or additional wiring required
- Separable every 12" - easily disconnected and connected without soldering
- Field cuttable every 4" or 6 LEDs
- 10' Maximum run length
- Dimmable with dimmable power supply
- Easy to install with pre-applied 3M™ tape or accessories
- Dimmable with dimmable power supply

**ELECTRICAL:**

**Voltage:** 24V  
**Lumens / Wattage:** 350lm / 4.2W per foot  
**Light Source:** 18 High Output LEDs per foot  
**Color Temperature:** 2700K, 3000K, 4200K, Blue, Green, Red or Yellow  
**Maximum Run Length:** 10'

**INCLUDED WITH TAPE LIGHT ROLL:**

(1) 10' Tape Light Roll  
 (1) 9" power line interconnector  
 (15) clear acrylic clips

**DRIVER:** Required — direct plug-in, Class II, and Dimmable Class II available.

**LISTINGS & WARRANTY:**

- cULus Listed for Damp Location
- IP44 Rated
- 3 Year Limited Warranty



Cuttable every 4" at marked intervals

Tape Width: 5/8"  
 Tape Depth: 1/8"  
 Lengths: 10' Roll, 12" Section, 4" Section

HIGH OUTPUT 24V LED TAPE LIGHT		CCT
<b>CATALOG NO. / LENGTH</b>		
<b>NUTP8-W10LED(CCT)</b>	10' Roll	<b>B</b> Blue
<b>NUTP8-WLED(CCT)/12</b>	12" Section	<b>G</b> Green
<b>NUTP8-WLED(CCT)/4</b>	4" Section	<b>R</b> Red
		<b>Y</b> Yellow
		<b>927</b> 2700K
		<b>930</b> 3000K
		<b>942</b> 4200K

*Example: NUTP8-WLED930/12  
 24V High Output LED Tape Light, 12" Section, 3000K*

10' Tape Rolls include ten 12" sections.  
 12" and 4" Tape sections contain male/female ends.

TAPE LIGHT ACCESSORIES



"Y" Splitter Cables  
**NAHO-600W**



"X" Splitter Cable  
**NAHO-601W**



Interconnection Cable  
**NAHO-602W** 2" Cable  
**NAHO-606W** 6" Cable  
**NAHO-618W** 18" Cable  
**NAHO-636W** 36" Cable  
**NAHO-672W** 72" Cable



Power Line Interconnector  
**NAHO-609W** 9" Cable



Power Line Interconnector with On/Off Switch  
**NAHO-611W** 11" Cable



Shrink Wrap Tube  
**NATL-400** Pack of 5



End Cap  
**NATL-403** Black  
**NATL-403W** White



Clear Acrylic Mounting Clips  
**NATHR-685** Pack of 15



2' Wire Raceway  
**NATL-422B** black  
**NATL-422W** white



Clips for Wire, White Plastic  
**NATL-404W** J-Clip 10/pk  
**NATL-405W** Over Wire 10/pk  
**NATL-406W** Clip 10/pk

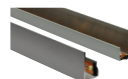
CHANNELS



4' Shallow Channel w/ Lens  
**NATL-C23A** aluminum w/wing  
**NATL-C24A** aluminum  
**NATL-C24B** black  
**NATL-C24W** white



4' Deep Channel w/ Lens  
**NATL-C25A** aluminum w/wing  
**NATL-C26A** aluminum  
**NATL-C26B** black  
**NATL-C26W** white



4' J-Style Channel  
**NATL-C27A** aluminum



4' Corner Channel w/ Lens  
**NATL-C28A** aluminum  
**NATL-C28B** black  
**NATL-C28W** white



4' Aluminum Channel, Lensless  
**NATHR-680**

DRIVERS & DRIVER ACCESSORIES



NEXUS® All-in-One LED Driver and Dimmer  
**NATL-SWEX100/24A** 24V 100W  
**NATL-SWEX/3FP** 3 Face Plates (Almond, Brown, Black)



Direct Plug-In LED Driver  
**NATL-524W** 24V 24W  
**NATL-545W** 24V 45W



Direct Plug-In LED Driver  
**NATL-545CPW** 24V 45W  
**NATL-596W** 24V 96W



Class II Hardwire LED Driver  
**NATL-5030HW** 24V 30W  
**NATL-5060HW** 24V 60W  
**NATL-5100HW** 24V 100W



Class II Hardwire LED Driver 0-10V dimming  
**NATL-5096-24-HWD10** 24V 96W



Class II Hardwire LED Driver ELV dimming  
**NATLED-5040HW** 24V 40W  
**NATLED-5075HW** 24V 75W



Class II Hardwire LED Driver with Breakers, MLV dimming  
**NMT-303/24C2D1** 120/24V 300W  
**NMT-303/24C2D2** 277/24V 300W



Class II Hardwire LED Driver with Regulator, MLV dimming  
**NMTD-60/24D** 24V 60W  
**NMTD-96/24D** 24V 96W



Power Line Connector  
**NALTL-10** 10' Cable  
**NALTL-30** 30' Cable



5' Power Line Splitter  
**NATL-302W**



Touch Dimmer with Memory  
**NATL-518W**



In-Line Motion Sensor  
**NAL-856W**



Low Voltage Splice Box  
**NATL-415W**



16AWG In-Wall Rated Wire  
**NATL-W16-2-250** 16AWG 250'  
**NATL-W16-2-20** 16AWG 20'



Terminal/Splicer Block  
**NATL-407** 4-Way  
**NATL-408** 8-Way

Note: See page 41 for more information about drivers.



# STANDARD ENCAPSULATED LED TAPE 12V or 24V



Designed to cast no shadows, our flexible LED light boasts a desirable seamless glow. Our durable standard tape is encapsulated in silicone for easy maintenance and durability.

**FEATURES:**

- Silicone encapsulated for maintenance and durability
- 70 Lumens per foot
- 24W per roll / 1.5W per foot
- 12V or 24V DC single color illumination
- Available in 7 colors: Blue, Green, Red, Yellow, Cool White (4200K), Warm White (3000K), Warm White (2700K)
- Separable every 12" - easily disconnect and connect without soldering
- Field cuttable every 2" on 12V and 4" on 24V at marked intervals with no effect to circuit
- Easy to install with pre-applied 3M™ tape or accessories
- Dimmable with dimmable power supply

**ELECTRICAL:**

**Voltage:** 12V or 24V  
**Lumens / Wattage:** 70lm / 1.5W per foot  
**Light Source:** 18 LEDs per foot  
**Color Rendering Index:** 90+ CRI  
**Color Temperature:** 2700K, 3000K, 4200K, Blue, Green, Red or Yellow  
**Maximum Run Length:** 64' (24V) / 32' (12V)

**INCLUDED WITH TAPE LIGHT ROLL:**

- (1) 16' Tape Light Roll
- (1) 9" power line interconnector
- (15) clear acrylic clips
- Kit also includes an LED plug-in driver

**DRIVER:** Required — direct plug-in, Class II, and Dimmable Class II available.

**LISTINGS & WARRANTY:**

- cULus Listed for Damp Location
- 3 Year Limited Warranty



Cutttable every 2" (12V) or 4" (24V) at marked intervals

Tape Width: 7/16"  
 Tape Depth: 1/8"  
 Lengths: 16' Roll, 12" Section, 4" Section

## STANDARD SILICONE ENCAPSULATED LED TAPE LIGHT

VOLT	SERIES / LENGTH	CCT
24V	NUTP1-W16LED(CCT) 16' Roll	<b>B</b> Blue <b>G</b> Green <b>R</b> Red <b>Y</b> Yellow <b>927</b> 2700K <b>930</b> 3000K <b>942</b> 4200K
	NUTP1-WLED(CCT)/12 12" Section	<b>927K</b> 2700K <b>930K</b> 3000K <b>942K</b> 4200K
	NUTP1-WLED(CCT)/4 4" Section	
	NUTP1-W16LED(CCT) 16' Kit	<b>927K</b> 2700K <b>930K</b> 3000K <b>942K</b> 4200K
12V	NUTP4-W16LED(CCT) 16' Roll	<b>930</b> 3000K <b>942</b> 4200K
	NUTP4-WLED(CCT)/12 12" Section	<b>930K</b> 3000K <b>942K</b> 4200K
	NUTP4-WLED(CCT)/4 4" Section	
	NUTP4-W16LED(CCT) 16' Kit	<b>930K</b> 3000K <b>942K</b> 4200K

Example: **NUTP1-W16LEDB** - 24V Standard Tape Light, 16' Roll, Blue

16' Tape Rolls include sixteen 12" sections. Kit includes plug-in driver. 12" and 4" Tape sections contain male/female ends.

TAPE LIGHT ACCESSORIES



"Y" Splitter Cables  
**NATL-300W**



"X" Splitter Cable  
**NATL-301W**



Interconnection Cable  
**NATL-202W** 2" Cable  
**NATL-206W** 6" Cable  
**NATL-218W** 18" Cable  
**NATL-236W** 36" Cable  
**NATL-272W** 72" Cable



Power Line Interconnector  
**NATL-509W** 24V 9" Cable  
**NATL-515W** 12V 9" Cable



Power Line Interconnector with On/Off Switch  
**NATL-511W** 24V 11" Cable  
**NATL-517** 12V 11" Cable



Shrink Wrap Tube  
**NATL-400** Pack of 5



End Cap  
**NATL-403** Black  
**NATL-403W** White



Clear Acrylic Mounting Clips  
**NATL-401** Pack of 15



2' Wire Raceway  
**NATL-422B** black  
**NATL-422W** white



Clips for Wire, White Plastic  
**NATL-404W** J-Clip 10/pk  
**NATL-405W** Over Wire 10/pk  
**NATL-406W** Clip 10/pk

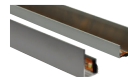
CHANNELS



4' Shallow Channel w/ Lens  
**NATL-C23A** aluminum w/wing  
**NATL-C24A** aluminum  
**NATL-C24B** black  
**NATL-C24W** white



4' Deep Channel w/ Lens  
**NATL-C25A** aluminum w/wing  
**NATL-C26A** aluminum  
**NATL-C26B** black  
**NATL-C26W** white



4' J-Style Channel  
**NATL-C27A** aluminum



4' Corner Channel w/ Lens  
**NATL-C28A** aluminum  
**NATL-C28B** black  
**NATL-C28W** white



4' Aluminum Channel, Lensless  
**NATHR-680**

DRIVERS & DRIVER ACCESSORIES



NEXUS® All-in-One LED Driver and Dimmer  
**NATL-SWEX60/12A** 12V 60W  
**NATL-SWEX100/24A** 24V 100W  
**NATL-SWEX/3FP** 3 Face Plates (Almond, Brown, Black)



Direct Plug-In LED Driver  
**NAPK-524/12** 12V 24W  
**NAPK-524W/12** 12V 24W  
**NATL-524W** 24V 24W  
**NATL-545W** 24V 45W



Direct Plug-In LED Driver  
**NAPK-550/12** 12V 50W  
**NATL-545CPW** 24V 45W  
**NATL-596W** 24V 96W



Class II Hardwire LED Driver  
**NAPK-5030HW/12** 12V 30W  
**NAPK-5060HW/12** 12V 60W  
**NATL-5030HW** 24V 30W  
**NATL-5060HW** 24V 60W  
**NATL-5100HW** 24V 100W



Class II Hardwire LED Driver 0-10V dimming  
**NATL-5060-12-HWD10** 12V 60W  
**NATL-5096-24-HWD10** 24V 96W



Class II Hardwire LED Driver ELV dimming  
**NAPKED-5040HW** 12V 40W  
**NAPKED-5060HW** 12V 60W  
**NATLED-5040HW** 24V 40W  
**NATLED-5075HW** 24V 75W



Class II Hardwire LED Driver with Breakers, MLV dimming  
**NMT-244/12C2D1** 120/12V 240W  
**NMT-244/12C2D2** 277/12V 240W  
**NMT-303/24C2D1** 120/24V 300W  
**NMT-303/24C2D2** 277/24V 300W



Class II Hardwire LED Driver with Regulator, MLV dimming  
**NMTD-40/12D** 12V 40W  
**NMTD-60/12D** 12V 60W  
**NMTD-60/24D** 24V 60W  
**NMTD-96/24D** 24V 96W



Power Line Connector  
**NATL-10** 10' Cable  
**NATL-30** 30' Cable



5' Power Line Splitter  
**NATL-302W**



Touch Dimmer with Memory  
**NATL-518W**



In-Line Motion Sensor  
**NAL-856W**



Low Voltage Splice Box  
**NATL-415W**



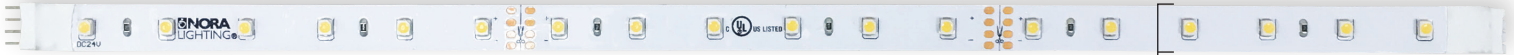
16AWG In-Wall Rated Wire  
**NATL-W16-2-250** 16AWG 250'  
**NATL-W16-2-20** 16AWG 20'



Terminal/Splitter Block  
**NATL-407** 4-Way  
**NATL-408** 8-Way

Note: See pages 40-41 for more information about drivers.

# STANDARD LED TAPE LIGHT 24V Non-Encapsulated



**FEATURES:**

- 70 Lumens per foot with 3000K CCT
- 90+ CRI
- 288 LEDs/26.4W per roll; 18 LEDs/1.65W per foot
- 24V DC single color illumination
- Three color outputs available: Cool White (4200K), Warm White (3000K), Warm White (2700K)
- Separable every 12"; easily disconnect and connect without soldering
- Field cuttable every 4" or 6 LEDs
- 64' Maximum run length
- Easy to install with pre-applied 3M™ tape or accessories
- Dimmable with dimmable power supply

**ELECTRICAL:**

**Voltage:** 24V  
**Lumens / Wattage:** 70lm / 1.65W per foot  
**Light Source:** 18 LEDs per foot  
**Color Rendering Index:** 90+ CRI  
**Color Temperature:** 2700K, 3000K or 4200K  
**Maximum Run Length:** 64'

**INCLUDED WITH TAPE LIGHT ROLL:**

- (1) 16' Tape Light Roll
- (1) 9" power line interconnector
- (15) clear acrylic clips

**DRIVER:** Required — direct plug-in, Class II, and Dimmable Class II available.

**LISTINGS & WARRANTY:**

- cULus Listed for Damp Location
- IP44 Rated
- 3 Year Limited Warranty



Cuttable every 4" at marked intervals

Tape Width: 7/16"  
 Tape Depth: 1/8"  
 Lengths: 16' Roll, 12" Section, 4" Section

## STANDARD LED TAPE LIGHT

SERIES / LENGTH	CCT
<b>NUTP7-W16LED(CCT)</b> 16' Roll	<b>927</b> 2700K
<b>NUTP7-WLED(CCT)/12</b> 12" Section	<b>930</b> 3000K
<b>NUTP7-WLED(CCT)/4</b> 4" Section	<b>942</b> 4200K
<b>NUTP7-W16LED(CCT)K</b> 16' Kit	

Example: **NUTP7-WLED927/4**  
 24V Standard Tape Light, 4" Section, 2700K

16' Tape Rolls include sixteen 12" sections. Kit includes plug-in driver. 12" and 4" Tape sections contain male/female ends.

# SIDE LIT LED TAPE LIGHT 24V Non-Encapsulated



**FEATURES:**

- Illuminates to the side, parallel to the mounting surface
- 70 Lumens per foot with 3000K CCT
- 288 LEDs / 24W per roll; 18 LEDs / 1.5W per foot
- 24V DC single color illumination
- Two color outputs available: Warm White (3000K) or Warm White (2700K)
- Separable every 12"; easily disconnect and connect without soldering
- Field cuttable every 4" or 6 LEDs
- 64' Maximum run length
- Easy to install with pre-applied 3M™ tape or accessories
- Dimmable with dimmable power supply

**ELECTRICAL:**

**Voltage:** 24V  
**Lumens / Wattage:** 70lm / 1.5W per foot  
**Light Source:** 18 LEDs per foot  
**Color Temperature:** 2700K or 3000K  
**Maximum Run Length:** 64'

**INCLUDED WITH TAPE LIGHT ROLL:**

- (1) 16' Tape Light Roll
- (1) 9" power line interconnector
- (15) clear acrylic clips

**DRIVER:** Required — direct plug-in, Class II, and Dimmable Class II available.

**LISTINGS & WARRANTY:**

- cULus Listed for Damp Location
- IP44 Rated
- 3 Year Limited Warranty



Cuttable every 4" at marked intervals

Side Lit tape illuminates to the side, parallel to the mounting surface

Tape Width: 7/16"  
 Tape Depth: 1/16"  
 Lengths: 16' Roll, 12" Section, 4" Section

## SIDE-LIT 24V LED TAPE LIGHT

SERIES / LENGTH	CCT
<b>NUTP9-16LED(CCT)</b> 16' Roll	<b>27</b> 2700K
<b>NUTP9-LED(CCT)/12</b> 12" Section	<b>30</b> 3000K
<b>NUTP9-LED(CCT)/4</b> 4" Section	

Example: **NUTP9-16LED30**  
 24V Side-Lit Tape Light, 16' Roll, 3000K

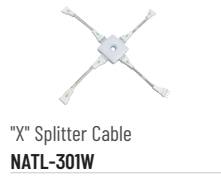
16' Tape Rolls include sixteen 12" sections. 12" and 4" Tape sections contain male/female ends.



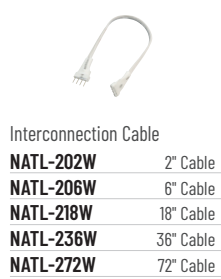
TAPE LIGHT ACCESSORIES



"Y" Splitter Cables  
**NATL-300W**



"X" Splitter Cable  
**NATL-301W**



Interconnection Cable  
**NATL-202W** 2" Cable  
**NATL-206W** 6" Cable  
**NATL-218W** 18" Cable  
**NATL-236W** 36" Cable  
**NATL-272W** 72" Cable



Power Line Interconnector  
**NATL-509W** 9" Cable



Power Line Interconnector with On/Off Switch  
**NATL-511W** 11" Cable



Shrink Wrap Tube  
**NATL-400** Pack of 5



End Cap  
**NATL-403** Black  
**NATL-403W** White



Clear Acrylic Mounting Clips  
**NATL-401** Pack of 15



2' Wire Raceway  
**NATL-422B** black  
**NATL-422W** white



Clips for Wire, White Plastic  
**NATL-404W** J-Clip 10/pk  
**NATL-405W** Over Wire 10/pk  
**NATL-406W** Clip 10/pk

CHANNELS



4' Shallow Channel w/ Lens  
**NATL-C23A** aluminum w/wing  
**NATL-C24A** aluminum  
**NATL-C24B** black  
**NATL-C24W** white



4' Deep Channel w/ Lens  
**NATL-C25A** aluminum w/wing  
**NATL-C26A** aluminum  
**NATL-C26B** black  
**NATL-C26W** white



4' J-Style Channel  
**NATL-C27A** aluminum

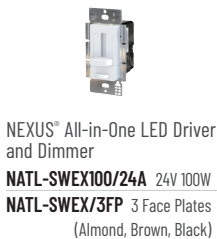


4' Corner Channel w/ Lens  
**NATL-C28A** aluminum  
**NATL-C28B** black  
**NATL-C28W** white

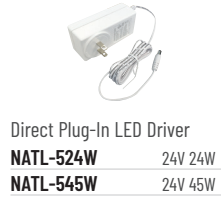


4' Aluminum Channel, Lensless  
**NATHR-680**

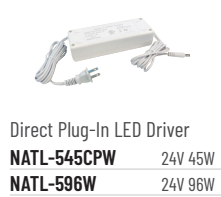
DRIVERS & DRIVER ACCESSORIES



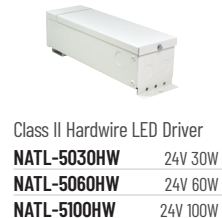
NEXUS® All-in-One LED Driver and Dimmer  
**NATL-SWEX100/24A** 24V 100W  
**NATL-SWEX/3FP** 3 Face Plates (Almond, Brown, Black)



Direct Plug-In LED Driver  
**NATL-524W** 24V 24W  
**NATL-545W** 24V 45W



Direct Plug-In LED Driver  
**NATL-545CPW** 24V 45W  
**NATL-596W** 24V 96W



Class II Hardwire LED Driver  
**NATL-5030HW** 24V 30W  
**NATL-5060HW** 24V 60W  
**NATL-5100HW** 24V 100W



Class II Hardwire LED Driver 0-10V dimming  
**NATL-5096-24-HWD10** 24V 96W



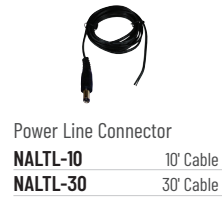
Class II Hardwire LED Driver ELV dimming  
**NATLED-5040HW** 24V 40W  
**NATLED-5075HW** 24V 75W



Class II Hardwire LED Driver with Breakers, MLV dimming  
**NMT-303/24C2D1** 120/24V 300W  
**NMT-303/24C2D2** 277/24V 300W



Class II Hardwire LED Driver with Regulator, MLV dimming  
**NMTD-60/24D** 24V 60W  
**NMTD-96/24D** 24V 96W



Power Line Connector  
**NALTL-10** 10' Cable  
**NALTL-30** 30' Cable



5' Power Line Splitter  
**NATL-302W**



Touch Dimmer with Memory  
**NATL-518W**



In-Line Motion Sensor  
**NAL-856W**



Low Voltage Splice Box  
**NATL-415W**



16AWG In-Wall Rated Wire  
**NATL-W16-2-250** 16AWG 250'  
**NATL-W16-2-20** 16AWG 20'



Terminal/Splitter Block  
**NATL-407** 4-Way  
**NATL-408** 8-Way

Note: See page 41 for more information about drivers.

# CONTINUOUS ROLL LED TAPE 24V Standard / Hy-Brite / High Output ○○○

**NUTP71**  
STANDARD



**NUTP51**  
HY-BRITE



**NUTP81**  
HIGH OUTPUT



**FEATURES:**

- Continuous 100' or 20' rolls
- 24V DC System
- Available in three outputs (310lm, 210lm or 80lm per foot)
- Available in three color outputs: Cool White (4200K), Warm White (3000K), Warm White (2700K)
- 90+ CRI
- Dedicated Flip type connectors
- Field cuttable every 4"
- No soldering
- Maximum single runs:
  - NUTP51 - 32 Feet
  - NUTP71 - 64 Feet
  - NUTP81 - 20 Feet
- Easy to install with pre-applied 3M™ tape or optional channels, acrylic clips or raceway accessories
- Dimmable with dimmable power supply

**ELECTRICAL:**

**Voltage:** 24V  
**Lumens / Wattage:**  
 NUTP51 - 210lm / 2.7W per foot  
 NUTP71 - 80lm / 1.3W per foot  
 NUTP81 - 310lm / 4.3W per foot  
**Light Source:** 18 LEDs per foot  
**Color Rendering Index:** 90+ CRI  
**Color Temperature:**  
 2700K, 3000K, 4200K  
**Maximum Run:** 32' (NUTP51),  
 64' (NUTP71), 20' (NUTP81)

**INCLUDED WITH 100' TAPE LIGHT ROLL:**

- (1) 100' Tape Light Roll
- (1) 12" power line interconnector
- (50) clear acrylic clips

**INCLUDED WITH 20' TAPE LIGHT ROLL:**

- (1) 20' Tape Light Roll
- (1) 12" power line interconnector
- (10) clear acrylic clips

**DRIVER:** Required — direct plug-in, Class II, and Dimmable Class II available.

**LISTINGS & WARRANTY:**

- cULus Listed for Damp Location
- IP44 Rated
- 3 Year Limited Warranty

Cuttable every 4" at marked intervals	<b>NUTP71</b>	<b>NUTP51</b>	<b>NUTP81</b>	
	Tape Width:	7/16"	1/2"	1/2"
	Tape Depth:	1/16"	1/8"	1/8"
	Lengths:	100' Roll or 20' Roll		

Available in 100' or 20' rolls. Cut every 4".

24V CONTINUOUS LED TAPE LIGHT			
TYPE	SERIES / LENGTH		CCT
HY-BRITE	NUTP51-W100LED(CCT)	100' Roll	927 2700K 930 3000K 942 4200K
	NUTP51-W20LED(CCT)	20' Roll	
STANDARD	NUTP71-W100LED(CCT)	100' Roll	927 2700K 930 3000K 942 4200K
	NUTP71-W20LED(CCT)	20' Roll	
HIGH OUTPUT	NUTP81-W100LED(CCT)	100' Roll	927 2700K 930 3000K 942 4200K
	NUTP81-W20LED(CCT)	20' Roll	


Example: **NUTP71-W100LED930**  
 24V Continuous Standard LED Tape Light, 100' roll, 3000K  
 Note: Consult factory for custom cuts.




TAPE LIGHT ACCESSORIES




Flip-Type Link Connector  
**NATLCFC-(S)00A** 12mm



Flip-Type Interconnection Cable  
**NATLCFC-(S)03A** 3"  
**NATLCFC-(S)06A** 6"  
**NATLCFC-(S)12A** 12"  
**NATLCFC-(S)24A** 24"  
**NATLCFC-(S)48A** 48"  
**NATLCFC-(S)72A** 72"




Flip-Type Splice Connector  
**NATLCFC-(S)08/3A** 3"  
**NATLCFC-(S)08/12A** 12"  
**NATLCFC-(S)08/48A** 48"  
**NATLCFC-(S)08/96A** 96"




Flip-Type DC Plug Connector Cable  
**NATLCFC-(S)09/3A** 3"  
**NATLCFC-(S)09/12A** 12"  
**NATLCFC-(S)09/48A** 48"  
**NATLCFC-(S)09/96A** 96"



Clear Acrylic Mounting Clips  
**NATHR-685** Pack of 15



2' Wire Raceway  
**NATL-422B** black  
**NATL-422W** white



Clips for Wire, White Plastic  
**NATL-404W** J-Clip 10/pk  
**NATL-405W** Over Wire 10/pk  
**NATL-406W** Clip 10/pk

Tape Style (S):  
**2** NUTP71 or  
**6** NUTP51 or NUTP81  
Example: NATLCFC-212A  
12" flip type interconnection for NUTP71 tape.

CHANNELS



4' Shallow Channel w/ Lens  
**NATL-C23A** aluminum w/wing  
**NATL-C24A** aluminum



4' Deep Channel w/ Lens  
**NATL-C25A** aluminum w/wing  
**NATL-C26A** aluminum



4' J-Style Channel w/ Lens  
**NATL-C27A** aluminum



4' Corner Channel w/ Lens  
**NATL-C28A** aluminum



4' Aluminum Channel, Lensless  
**NATHR-680**

DRIVERS & DRIVER ACCESSORIES




NEXUS® All-in-One LED Driver and Dimmer  
**NATL-SWEX100/24A** 24V 100W  
**NATL-SWEX/3FP** 3 Face Plates (Almond, Brown, Black)



Direct Plug-In LED Driver  
**NATL-524W** 24V 24W  
**NATL-545W** 24V 45W



Direct Plug-In LED Driver  
**NATL-545CPW** 24V 45W  
**NATL-596W** 24V 96W



Class II Hardwire LED Driver  
**NATL-5030HW** 24V 30W  
**NATL-5060HW** 24V 60W  
**NATL-5100HW** 24V 100W



Class II Hardwire LED Driver 0-10V dimming  
**NATL-5096-24-HWD10** 24V 96W




Class II Hardwire LED Driver ELV dimming  
**NATLED-5040HW** 24V 40W  
**NATLED-5075HW** 24V 75W



Class II Hardwire LED Driver with Breakers, MLV dimming  
**NMT-303/24C2D1** 120/24V 300W  
**NMT-303/24C2D2** 277/24V 300W



Class II Hardwire LED Driver with Regulator, MLV dimming  
**NMTD-60/24D** 24V 60W  
**NMTD-96/24D** 24V 96W



Power Line Connector  
**NATL-10** 10' Cable  
**NATL-30** 30' Cable



5' Power Line Splitter  
**NATL-302W**



Touch Dimmer with Memory  
**NATL-518W**



In-Line Motion Sensor  
**NAL-856W**



Low Voltage Splice Box  
**NATL-415W**



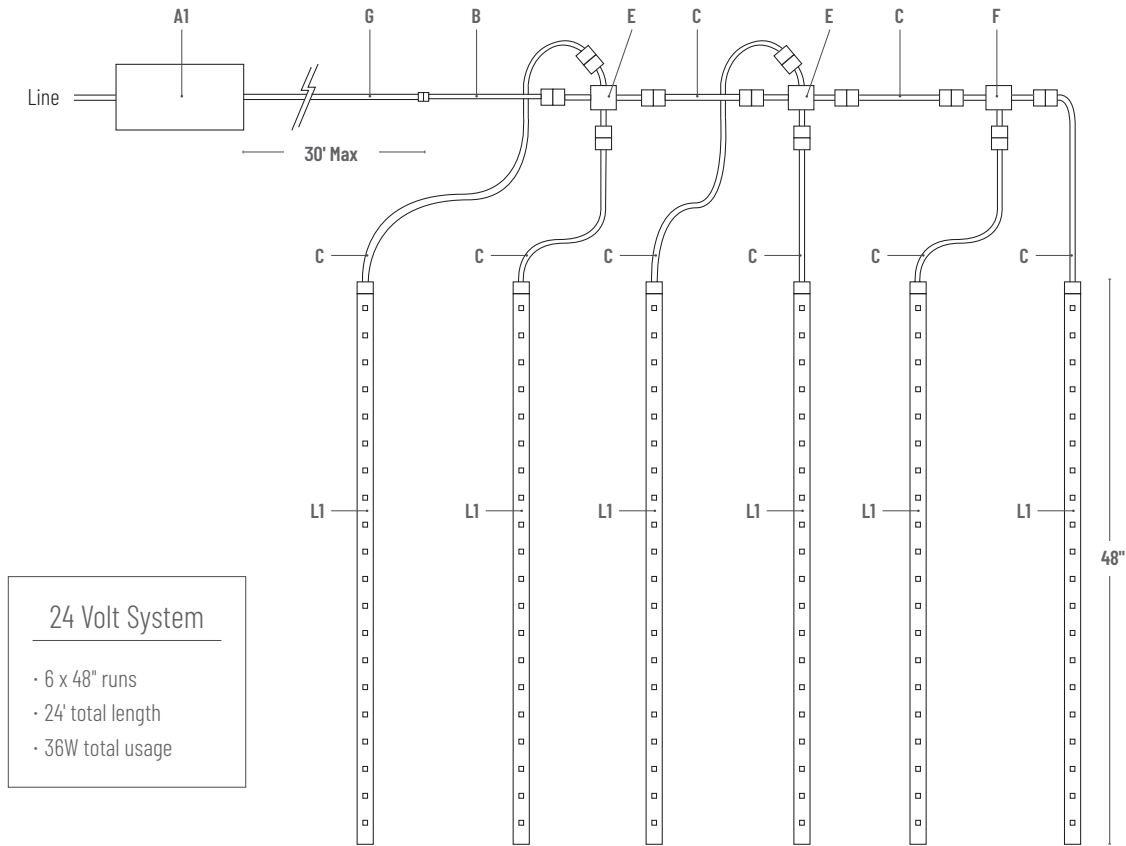
16AWG In-Wall Rated Wire  
**NATL-W16-2-250** 16AWG 250'  
**NATL-W16-2-20** 16AWG 20'



Terminal/Splitter Block  
**NATL-407** 4-Way  
**NATL-408** 8-Way

Note: See page 41 for more information about drivers.

# STANDARD & SIDE-LIT LED TAPE 24V SAMPLE LAYOUT



**24 Volt System**

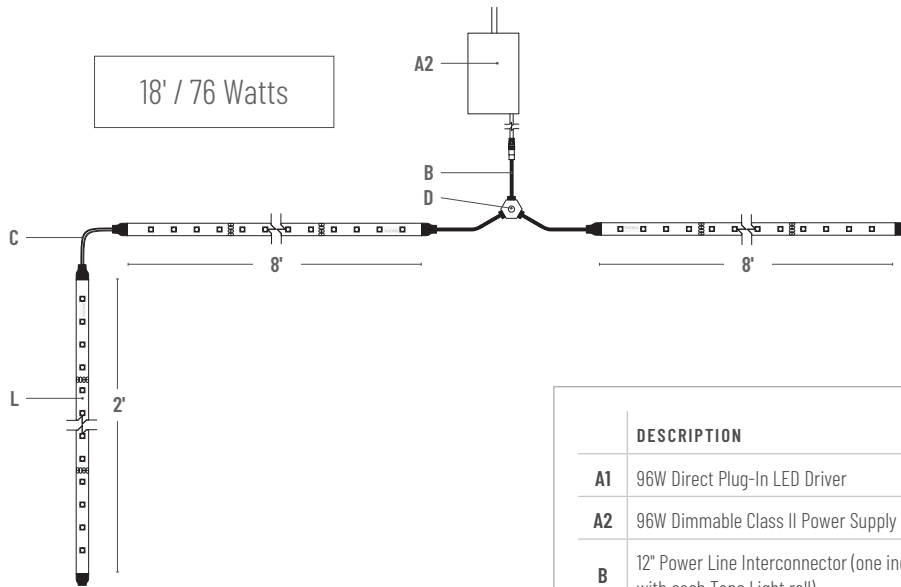
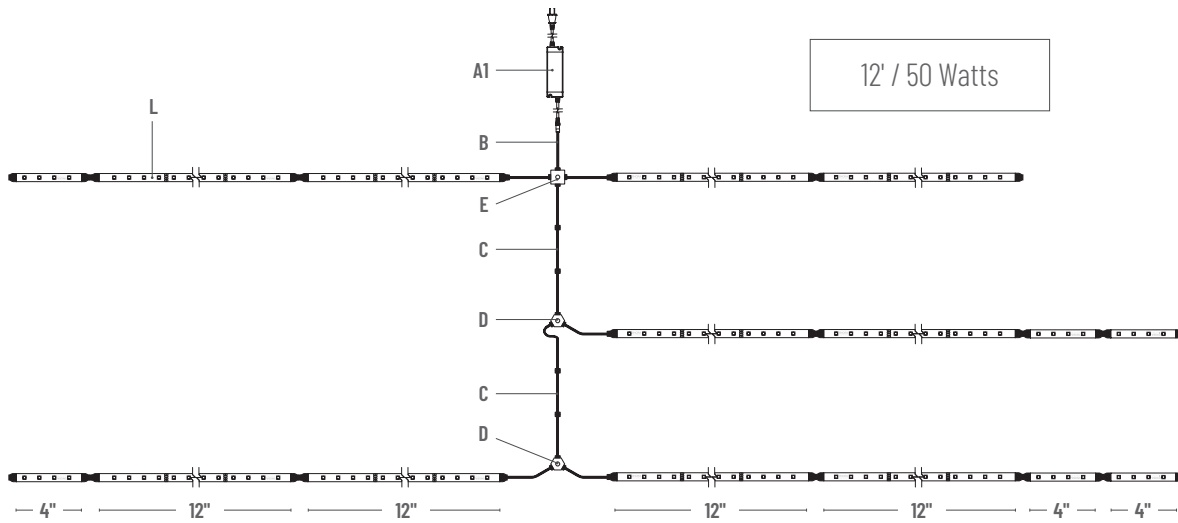
- 6 x 48" runs
- 24' total length
- 36W total usage

	DESCRIPTION	ITEM #
<b>A1</b>	24V 60W Dimmable Class II Hardwire LED Driver	NMTD-60/24D
<b>B</b>	24V 9" Power Line Interconnector (one included with each Tape Light roll)	NATL-509
<b>C</b>	2" Interconnection Cable	NATL-202
	6" Interconnection Cable	NATL-206
	18" Interconnection Cable	NATL-218
	36" Interconnection Cable	NATL-236
	72" Interconnection Cable	NATL-272
<b>E</b>	"X" Splitter Cable (1 in & 3 out)	NATL-301
<b>F</b>	"Y" Splitter Cable (1 in & 2 out)	NATL-300
<b>G</b>	10' Power Line Connector (one included with Class II drivers)	NALTL-10
	30' Power Line Connector	NALTL-30
<b>L1</b>	24V 48" LED Tape Light Segments (Each NUTP(1, 7 or 9)-W16LED Roll contains (16) 12" detachable sections)	(1) NUTP(1, 7 or 9)-W16LED(color) and (8) NUTP(1, 7 or 9)-WLED(color)/12

**\*Note:** All drivers require power line interconnector to connect to tape. (One included with each roll.)

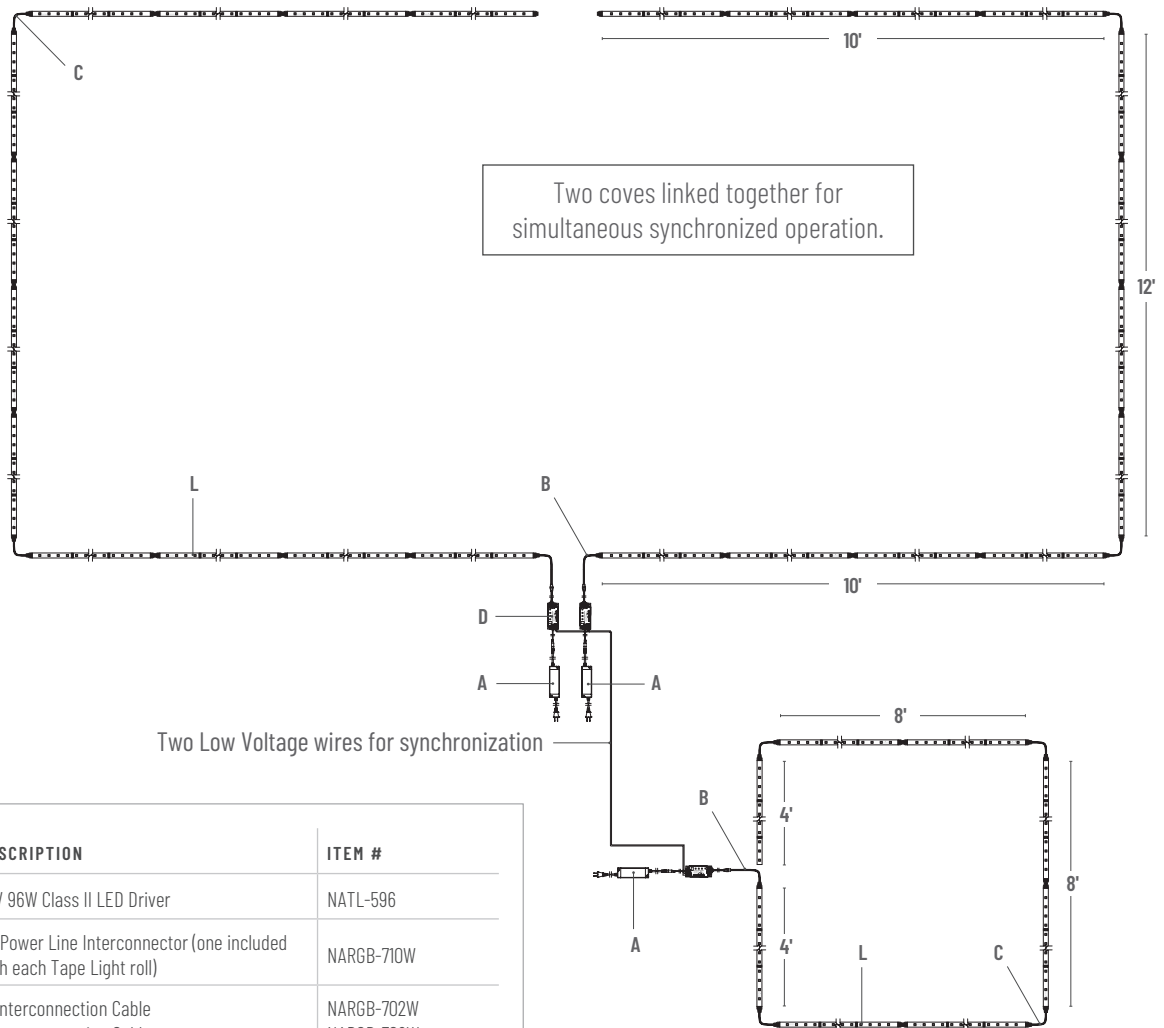
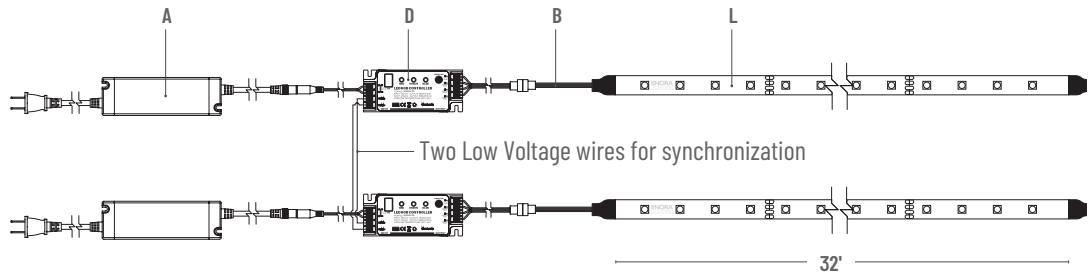


# HIGH OUTPUT LED TAPE 24V SAMPLE LAYOUTS



	DESCRIPTION	ITEM #
A1	96W Direct Plug-In LED Driver	NATL-596W
A2	96W Dimmable Class II Power Supply	NMTD-96/24D
B	12" Power Line Interconnector (one included with each Tape Light roll)	NAHO-609W
C	2" Interconnection Cable	NAHO-602W
	6" Interconnection Cable	NAHO-606W
	18" Interconnection Cable	NAHO-618W
	36" Interconnection Cable	NAHO-636W
	72" Interconnection Cable	NAHO-672W
D	"Y" Splitter Cable	NAHO-600W
E	"X" Splitter Cable	NAHO-601W
L	4" High Output LED Tape Light	NUTP8-WLED(color)/4
	12" High Output LED Tape Light	NUTP8-WLED(color)/12
	10' High Output LED Tape Light Roll	NUTP8-WIOLED(color)

# RGB COLOR CHANGING LED TAPE 24V SAMPLE LAYOUTS



	DESCRIPTION	ITEM #
A	24V 96W Class II LED Driver	NATL-596
B	12" Power Line Interconnector (one included with each Tape Light roll)	NARGB-710W
C	2" Interconnection Cable	NARGB-702W
	6" Interconnection Cable	NARGB-706W
	18" Interconnection Cable	NARGB-718W
	36" Interconnection Cable	NARGB-736W
	72" Interconnection Cable	NARGB-772W
D	24V RGB Controller	NARGB-760
L	24V 16' RGB LED Tape Light Rolls (Disconnect every 12" or can be cut every 6", contains (16) 12" segments)	NUTP3-W16LEDRGB



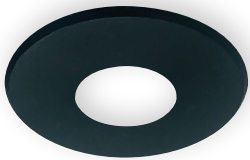
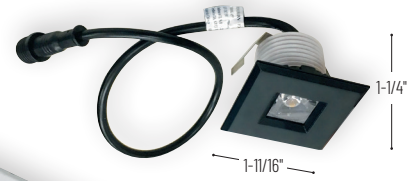








# M1 SERIES 1" MINIATURE RECESSED 12V 110LM / 2W



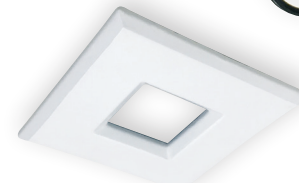
NMI-RSS



NMI-RAEYELID



NMI-RSSD



NMI-SSS

M1 miniature recessed series features quality and convenience with easy installation for indoor or outdoor applications. Each luminaire includes four plastic downlight trims, three optics and a 6" quick connect. Series is available in four color temperatures (2700K, 3000K, 3500K or 4000K) and requires a 12V dimmable driver.

**FEATURES:**

- No housing required
- Each luminaire includes four plastic trims (2 square and 2 round in white and black finishes), three optics and a 6" quick connect
- Field changeable optics (spot, narrow and flood)
- Threaded LED module allows for field changeable trims
- Prewired junction box for easy installation
- Quick disconnect allows for extended lengths
- IC rated for direct contact with insulation, no minimum clearance required
- Remodel or new construction applications

**ELECTRICAL:**

**Voltage:** 12V DC  
**Lumens / Wattage:** 110lm / 2W  
**Color Rendering Index:** 90+ CRI  
**Color Temperature:** 2700K, 3000K, 3500K, 4000K  
**Dimming:** Triac or ELV

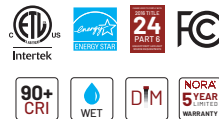
**MOUNTING:** Recessed, no housing required.

**DRIVER:** 12V dimmable driver required.

**NMI-DVR12:** 12V 12W Dimmable Hardwire Driver  
**NMI-DVR20:** 12V 20W Dimmable Hardwire Driver  
**NMI-DVR30:** 12V 30W Dimmable Hardwire Driver  
 Requires access to driver.

**LISTINGS & WARRANTY:**

- cETLus Listed for Wet Locations
- ENERGY STAR certified
- 5-Year Limited Warranty
- FCC compliant
- Can be used to comply with 2016 Title 24 - part 6 High Efficacy LED light source requirements



**M1 SERIES LED MODULE**

SERIES / LM / W	CCT	FINISH
<b>NMI-170</b> 170lm / 2W	<b>27X</b> 2700K	<b>2PBW</b> (2) Square Plastic Trims in Black and White (2) Round Plastic Trims in Black and White
	<b>30X</b> 3000K	
	<b>35X</b> 3500K	
	<b>40X</b> 4000K	

Example: **NMI-17030X2PBW** (Requires 12V Dimmable Driver)  
 1" M1 LED Module and (4) Plastic Trims

**M1 SERIES TRIMS (OPTIONAL)**

SERIES / DESCRIPTION	FINISH
<b>NMI-RSS</b> 1" Round Stainless Steel	<b>B</b> Black
<b>NMI-RAEYELID</b> 1" Round Scoop	<b>BN</b> Brushed Nickel
<b>NMI-RSSD</b> 1" Round Stainless Indicator	<b>W</b> White
<b>NMI-SSS</b> 1" Square M1 Stainless Steel	

Example: **NMI-RSSB**  
 M1 1" Round Stainless Steel Trim, Black finish

## M1 MINIATURE RECESSED ACCESSORIES



**Dimmable Hardwire Driver**

<b>NMI-DVR12</b>	12W
<b>NMI-DVR20</b>	20W
<b>NMI-DVR30</b>	30W

Input Voltage: 120V  
 Output Voltage: 12V DC  
 Dimming: Triac or ELV



**Linkable Extension Cable**

<b>NMI-EXT6</b>	6" Cable
<b>NMI-EXT12</b>	12" Cable
<b>NMI-EXT18</b>	18" Cable
<b>NMI-EXT48</b>	48" Cable
<b>NMI-EXT240</b>	240" Cable

Use to extend the length between luminaire and driver / splitter / wire harness. Can be connected together to create custom lengths.



**Splitter Cable**  
 (1 input - 6 output)

**NMI-TM6**

Use to connect up to (6) NMI LED modules to an LED driver. Input wire length: 4-3/4"  
 Output wire lengths: 5-1/4" each



**Wire Harness System**

**NMI-WH6**

Use to connect up to (6) NMI LED modules to an LED driver on an evenly spaced wire. Each 6" dropped is spaced 32-1/2" on center. Spacing between luminaires: 32-1/2"  
 Output wire length: 6" each



**New Construction Frame-In Kit**

**NMI-F**

For new construction pre-wiring and easier layout planning







# JOSH LED PUCK LIGHT 12V 300LM / 4.5W



Ideal for accent, under cabinet, in cabinet, display cases, niche, and other applications with limited space, these low-profile fixtures can be spaced together to provide excellent and even illumination on all surfaces. The Josh LED Puck Light may be recess or surface mounted, produces no diode image, eliminates forward heat and has no UV or infrared rays to harm artwork, retail displays or heat sensitive foods. Josh produces more light than a traditional 20 watt xenon or halogen puck while consuming only 4.5 watts.

**FEATURES:**

- Compact 1/2" deep by 2-3/4" diameter size makes it well suited to small spaces
- Easy installation
- Dimmable with dimmable power supply
- 72" wire included with each puck
- 12", 24", 38" and 48" accessory extension cables available
- No flicker delay or warm up like with compact fluorescent products
- No UV light or infrared wavelengths

**ELECTRICAL:**

**Voltage:** 12V DC  
**Lumens / Wattage:** 300lm / 4.5W at 4000K  
**Light Source:** 24 LEDs  
**Color Rendering Index:** 90+ CRI  
**Color Temperature:** 2700K, 3000K, 3500K, 4000K  
**Maximum Length:** Six luminaires per run using connector block. Power up to 12 units per 60W power supply.

**MOUNTING:** Surface mount with included housing or recess mount without housing.

**FINISHES:** Black (B), Brushed Nickel (BN), Bronze (BZ) or White (W)

**DRIVER:** Required – direct plug-in, Class II, and Dimmable Class II available, see page 40.

**LISTINGS & WARRANTY:**

- cULus Listed for Damp Location
- ENERGY STAR certified
- ROHS compliant
- 5 Year Limited Warranty



**JOSH 12V LED PUCK LIGHT**

SERIES / LUMEN / WATT	CCT	FINISH
<b>NMP-LED</b> 300lm / 4.5W	<b>27</b> 2700K	<b>B</b> Black
	<b>30</b> 3000K	<b>BN</b> Brushed Nickel
	<b>35</b> 3500K	<b>BZ</b> Bronze
	<b>40</b> 4000K	<b>W</b> White

Example: **NMP-LED30BZ**  
 Josh LED Puck Light, 3000K, Bronze finish

Note: 12V Driver required, see page 40 for drivers and accessories.

## JOSH LED PUCK LIGHT ACCESSORIES



**6-Port Power Line Interconnect**

<b>NMPA-6P-24B</b>	Black
<b>NMPA-6P-24W</b>	White

Terminal block connects up to six LED Josh Puck lights to a Nora driver. Includes 24" cord with RCA jack.



**Extension Cable**

<b>NMPA-EW-12</b>	12" Cable
<b>NMPA-EW-24</b>	24" Cable
<b>NMPA-EW-36</b>	36" Cable
<b>NMPA-EW-48</b>	48" Cable

Finish: Black (B), White (W)

Used to extend the length of the cable from the puck to the terminal block. Linkable up to 110".



# LINKABLE LED PUCK LIGHT 12V 210LM / 4.2W



Slim LED Puck Light system is ideal for accent, under cabinet, in cabinet, display cases, niche, furniture, jewelry cases, and other applications with limited space. These low-profile fixtures can be linked together to provide excellent and even illumination on all surfaces. The LED Puck Light is one of the most energy efficient products in the market. Combined with ultra low-profile housing, the luminaire offers unique features and a great ease of installation.

**FEATURES:**

- 210 lumens / 4.2W
- Ten pucks can be daisy-chained on a single run
- 90' Maximum Distance
- Well suited for very small spaces: 1/2" deep with 2-3/4" diameter
- 3", 6", 12", and 24" interconnectors included with each puck (can be linked together)
- Variety of plug-in, hardwire or dimmable drivers, see page 40
- Surface mount or recessed with accessory

**ELECTRICAL:**

**Voltage:** 12V  
**Lumens / Wattage:** 210lm / 4.2W  
**Color Temperature:** 3000K  
**Maximum Distance:** 90' (10 LED Puck Lights max.)

**MOUNTING:** Surface mount with included surface mount housing or recess mount with recessed housing accessory (sold separately).

**INCLUDES:** Each LED Puck Light includes a 3", 6", 12", and 24" interconnection cable and mounting clip with screw.

**FINISHES:** Bronze (BZ) or White (W)

**DRIVER:** Required – direct plug-in, Class II, and Dimmable Class II available, see page 40.

**LISTINGS & WARRANTY:**

- cULus Listed for Dry Location
- ROHS compliant
- 3 Year Limited Warranty



LINKABLE 12V LED PUCK LIGHT		
SERIES / LUMEN / WATT	CCT	FINISH
<b>NMPK1-3LED</b> 210lm / 4.2W	<b>30</b> 3000K	<b>BZ</b> Bronze <b>W</b> White
<i>Example: NMPK1-3LED30BZ</i> One LED Puck Light, 210lm / 4.2W, 3000K, Bronze finish		

Note: 12V Driver required, see page 40 for drivers and accessories.

## LINKABLE LED PUCK LIGHT ACCESSORIES



**Splitter**  
**NAPK-701B** Black  
**NAPK-701W** White

To separate 4 puck light runs from a single driver or to split a run between puck lights. One in and four out.



**Interconnection Cable**  
**NAPK-702** 2" Cable  
**NAPK-703** 3" Cable  
**NAPK-706** 6" Cable  
**NAPK-712** 12" Cable  
**NAPK-724** 24" Cable  
**NAPK-736** 36" Cable  
**NAPK-748** 48" Cable

**Finish:** Black (B), White (W)  
 Allows easy linking of two pucks.



**Mini Coupler**  
**NAPK-713B** Black  
**NAPK-713W** White

Used to connect two interconnection cables together or to add interconnection cable to power line interconnector.  
 Dim.: 3/8" W; 3/4" L; 1/4" H



**Power Line Interconnector**  
**NAPK-711B** 12" black w/switch  
**NAPK-711W** 12" white w/switch  
**NAPK-709B** 18" black  
**NAPK-709W** 18" white

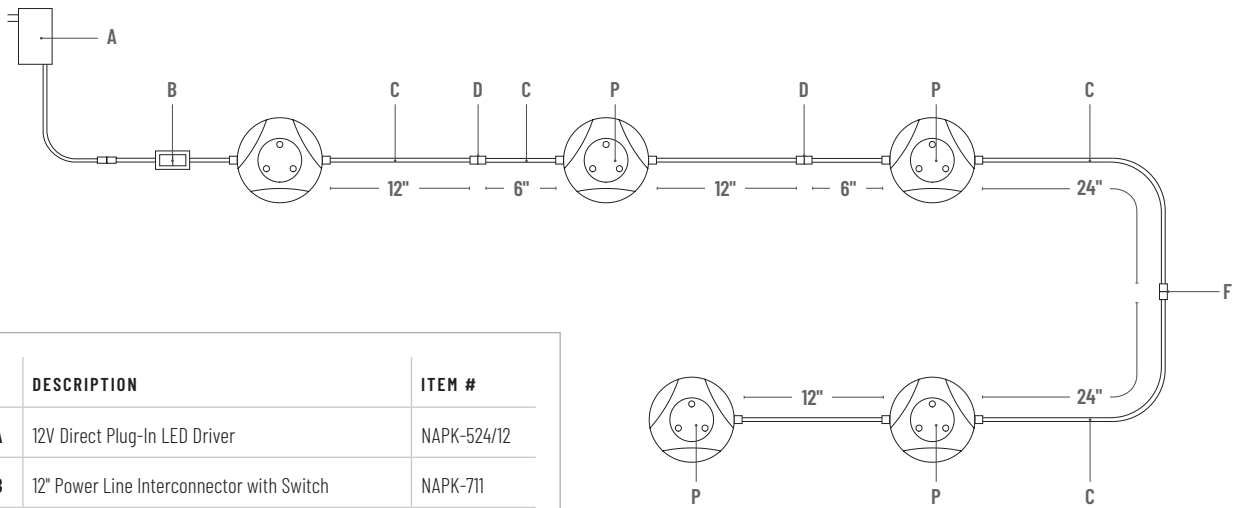
Connects puck light to a driver.



**Recessed Housing Accessory**  
**NMPKA-RECBZ** Bronze  
**NMPKA-RECC** Chrome  
**NMPKA-RECW** White

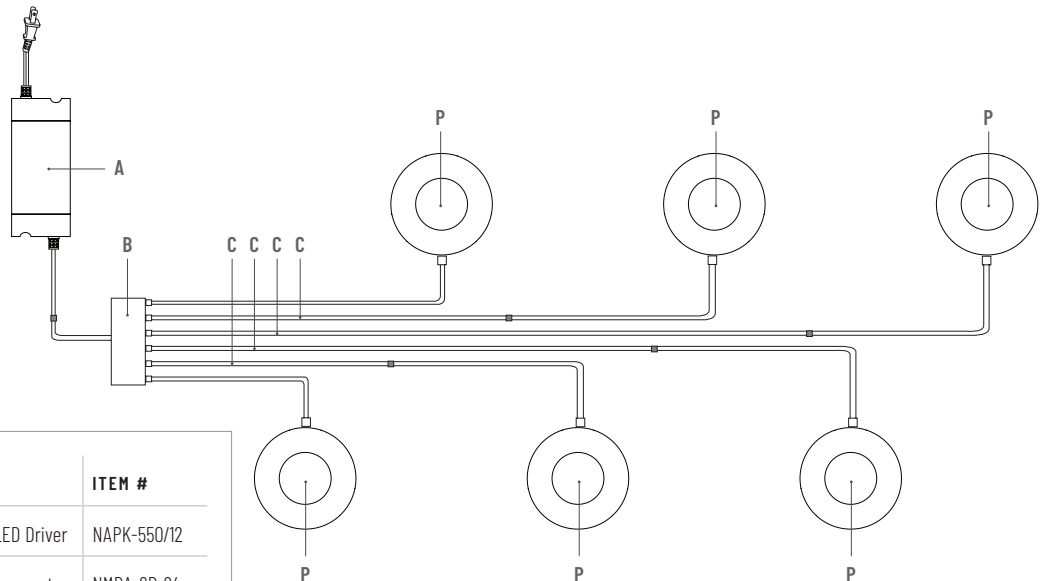
Used to mount puck light recessed and flush

## LINKABLE LED PUCK LIGHT 12V SAMPLE LAYOUT



	DESCRIPTION	ITEM #
A	12V Direct Plug-In LED Driver	NAPK-524/12
B	12" Power Line Interconnector with Switch	NAPK-711
C	6" Interconnection Cable (included with ea. Puck) 12" Interconnection Cable (included with ea. Puck) 24" Interconnection Cable (included with ea. Puck)	NAPK-706 NAPK-712 NAPK-724
D	Mini Coupler	NAPK-713
P	LED Puck Light	NMPKI-3LED

## JOSH LED PUCK LIGHT 12V SAMPLE LAYOUT




	DESCRIPTION	ITEM #
A	12V 50W Direct Plug-In LED Driver	NAPK-550/12
B	6-Port Power Line Interconnect	NMPA-6P-24
C	12" Extension Cable 24" Extension Cable 36" Extension Cable 48" Extension Cable	NMPA-EW-12 NMPA-EW-24 NMPA-EW-36 NMPA-EW-48
P	Josh LED Puck Light	NMP-LED

# 12V LED DRIVERS

	INPUT VOLTAGE	OUTPUT VOLTAGE / WATTAGE	DIMMING	ITEM NO.	STANDARD ENCAP.	RGB TAPE	LED PUCK LIGHT	DIMENSIONS / DESCRIPTION
	<b>NEXUS® All-In-One LED Driver and Dimmer</b> Eliminates driver. Allows 120V input from single gang box. On/Off switch.							
	120V	12V 60W	Integral 100-5%	<b>NATL-SWEX60/12A</b>	•		•	Fits in standard gang box
	Three face plates Almond, Brown, Black			<b>NATL-SWEX/3FP</b>	•		•	Replaces included white face plate
	<b>Direct Plug-In LED Driver</b>							
	120V	12V 24W	Non-Dim	<b>NAPK-524/12</b>	•	•	•	4' Cord and Plug, Black finish
	120V	12V 24W	Non-Dim	<b>NAPK-524W/12</b>	•	•	•	4' Cord and Plug, White finish
	<b>Direct Plug-In LED Driver</b>							
	120V	12V 50W	Non-Dim	<b>NAPK-550/12</b>	•	•	•	6' Cord and Plug & 60" Power Line Connector
	<b>Class II Hardwire LED Driver - Non-Dimmable</b> Includes 10' Power Line Connector							
	120V-240V	12V 30W	Non-Dim	<b>NAPK-5030HW/12</b>	•	•	•	Width: 3-3/8" Length: 11-1/4" Height: 3-1/4"
	120V-240V	12V 60W	Non-Dim	<b>NAPK-5060HW/12</b>	•	•	•	Width: 3-3/8" Length: 11-1/4" Height: 3-1/4"
	<b>Class II Hardwire LED Driver - ELV Dimming</b> Includes 10' Power Line Connector							
	120V	12V 40W	ELV	<b>NAPKED-5040HW</b>	•	•	•	Width: 2-1/8" Length: 9-1/2" Height: 1-1/2"
	120V	12V 60W	ELV	<b>NAPKED-5060HW</b>	•	•	•	Width: 2-1/8" Length: 9-1/2" Height: 1-1/2"
	<b>Class II Hardwire LED Driver - 0-10V Dimming</b> Includes 10' Power Line Connector							
	120V-277V	12V 60W	0-10V	<b>NATL-5060-12-HWD10</b>	•	•	•	Width: 3-3/8" Length: 11-1/4" Height: 3-1/4"
	<b>Class II Hardwire LED Driver with (4) 60W Breakers</b> Includes (4) 10' Power Line Connectors							
	120V	12V 240W	MLV	<b>NMT-244/12C2D1</b>	•	•	•	Width: 8-1/2" Length: 13" Height: 4-3/8"
	277V	12V 240W	MLV	<b>NMT-244/12C2D2</b>	•	•	•	Width: 8-1/2" Length: 13" Height: 4-3/8"
	<b>Class II Hardwire LED Driver with Regulator</b> Includes 10' Power Line Connector							
	120V-277V	12V 40W	MLV	<b>NMTD-40/12D</b>	•	•	•	Width: 3" Length: 10" Height: 2-7/8"
	120V-277V	12V 60W	MLV	<b>NMTD-60/12D</b>	•	•	•	Width: 3" Length: 10" Height: 2-7/8"

DRIVER ACCESSORIES




**Power Line Connector**  
**NALTL-10** 10' Cable  
**NALTL-30** 30' Cable  
 For use with Class II drivers.  
**5" Power Line Splitter**  
**NATL-302W**  
 Splits power line connector into two separate leads, requires power line cable.



**Touch Dimmer with Memory**  
**NATL-518W**  
 72W max., no power fail memory, touch on/off and hold to dim.  
**In-Line Motion Sensor**  
**NAL-856W**  
 12' Max activation distance; 20 second auto off; 120° detection zone; Max Load 4A.



**Low Voltage Splice Box**  
**NATL-415W**  
 Joins low voltage lead to low voltage power line connector or interconnector.



**16AWG In-Wall Rated Wire**  
**NATL-W16-2-250** 16AWG 250'  
**NATL-W16-2-20** 16AWG 20'  
 16 AWG low voltage Class II two-conductor, in-wall rated wire.



**Terminal/Splitter Block**  
**NATL-407** 4-Way  
**NATL-408** 8-Way



# 24V LED DRIVERS

	INPUT VOLTAGE	OUTPUT VOLTAGE / WATTAGE	DIMMING	ITEM NO.	SILK SBC LIGHTBAR	STANDARD ENCAP.	STANDARD TAPE	SIDE LIT TAPE	HY-BRITE TAPE	HIGH OUTPUT TAPE	CONTINUOUS TAPE	RGB TAPE	RGBW TAPE	CCT TAPE	COMFORT DIM TAPE
	<b>NEXUS® All-In-One LED Driver and Dimmer</b> Eliminates driver. Allows 120V input from single gang box. On/Off switch.														
	120V	24V 100W	Integral 100-5%	<b>NATL-SWEX100/24A</b>	•	•	•	•	•	•	•				
	Three face plates: Almond, Brown, Black				<b>NATL-SWEX/3FP</b>	•	•	•	•	•	•				
	<b>Direct Plug-In LED Driver</b> Dimensions: 4' Cord and Plug														
	120V	24V 24W	Non-Dim	<b>NATL-524W</b>	•	•	•	•	•	•	•	•	•	•	
	120V	24V 45W	Non-Dim	<b>NATL-545W</b>	•	•	•	•	•	•	•	•	•	•	
	<b>Direct Plug-In LED Driver</b> Dimensions: 55" Cord and Plug and 44" Power Line Connector														
	120V	24V 45W	Non-Dim	<b>NATL-545CPW</b>	•	•	•	•	•	•	•	•	•	•	
	120V	24V 96W	Non-Dim	<b>NATL-596W</b>	•	•	•	•	•	•	•	•	•	•	
	<b>Class II Hardwire LED Driver - Non-Dimmable</b> Includes 10' Power Line Connector Dimensions: W: 3-3/8" L: 11-1/4" H: 3-1/4"														
	120V-240V	24V 30W	Non-Dim	<b>NATL-5030HW</b>	•	•	•	•	•	•	•	•	•	•	
	120V-240V	24V 60W	Non-Dim	<b>NATL-5060HW</b>	•	•	•	•	•	•	•	•	•	•	
	120V-240V	24V 100W	Non-Dim	<b>NATL-5100HW</b>	•	•	•	•	•	•	•	•	•	•	
	<b>Class II Hardwire LED Driver - ELV Dimming</b> Includes 10' Power Line Connector Dimensions: W: 2-1/8" L: 9-1/2" H: 1-1/2"														
	120V	24V 40W	ELV	<b>NATLED-5040HW</b>	•	•	•	•	•	•	•	•	•	•	
	120V	24V 75W	ELV	<b>NATLED-5075HW</b>	•	•	•	•	•	•	•	•	•	•	
	<b>Class II Hardwire LED Driver - 0-10V Dimming</b> Includes 10' Power Line Connector Dimensions: W: 3-3/8" L: 11-1/4" H: 3-1/4"														
	120V-277V	24V 96W	0-10V	<b>NATL-5096-24-HWD10</b>	•	•	•	•	•	•	•	•	•	•	
	<b>Class II Hardwire LED Driver with (3) 100W Breakers</b> Includes (3) 10' Power Line Connectors Dimensions: W: 3" L: 10" H: 2-7/8"														
	120V	24V 300W	MLV	<b>NMT-303/24C2D1</b>	•	•	•	•	•	•	•	•	•	•	•
	277V	24V 300W	MLV	<b>NMT-303/24C2D2</b>	•	•	•	•	•	•	•	•	•	•	•
	<b>Class II Hardwire LED Driver with Regulator</b> Includes 10' Power Line Connector														
	120V-277V	24V 60W	MLV	<b>NMTD-60/24D</b>	•	•	•	•	•	•	•	•	•	•	•
	120V-277V	24V 96W	MLV	<b>NMTD-96/24D</b>	•	•	•	•	•	•	•	•	•	•	•

DRIVER ACCESSORIES



**Power Line Connector**  
**NATL-10** 10' Cable  
**NATL-30** 30' Cable  
 For use with Class II drivers.

**5" Power Line Splitter**  
**NATL-302W**  
 Splits power line connector into two separate leads, requires power line cable.

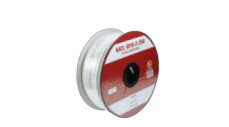


**Touch Dimmer with Memory**  
**NATL-518W**  
 72W max., no power fail memory, touch on/off and hold to dim.

**In-Line Motion Sensor**  
**NAL-856W**  
 12' Max activation distance; 20 second auto off; 120" detection zone; Max Load 4A.



**Low Voltage Splice Box**  
**NATL-415W**  
 Joins low voltage lead to low voltage power line connector or interconnector.



**16AWG In-Wall Rated Wire**  
**NATL-W16-2-250** 16AWG 250'  
**NATL-W16-2-20** 16AWG 20'  
 16 AWG low voltage Class II two-conductor, in-wall rated wire.



**Terminal/Splitter Block**  
**NATL-407** 4-Way  
**NATL-408** 8-Way

# NORA LIGHTING **LINEAR ESTIMATE FORM**

## SKETCH OF LAYOUT

---

## SELECT SOURCE LIGHTBAR, LEDUR, BRAVO, TAPE, M1 or PUCK

1. Number of feet to be illuminated or number of M1 or Pucks \_\_\_\_\_
2. Power feed (one included with tape light rolls) \_\_\_\_\_
3. Linking product together? Lengths \_\_\_\_\_
4. Controller (For RGB, RGBW, & CCT Tape) \_\_\_\_\_
5. Driver - Determine maximum runs or loads. Using Nexus? Splitter? Distance from driver to power feed? \_\_\_\_\_
6. Accessories - Wire mold to hide surface feeds and joiners? \_\_\_\_\_
  - Mounting tape in a channel? \_\_\_\_\_
  - Low voltage wire to be in the wall, low voltage splice box? \_\_\_\_\_
  - In-Line motion or dimming control? \_\_\_\_\_

---

## JOB INFORMATION

Job Name: \_\_\_\_\_

Area: \_\_\_\_\_

Ref. # \_\_\_\_\_

Model No. \_\_\_\_\_

Description: \_\_\_\_\_

\_\_\_\_\_

\_\_\_\_\_

\_\_\_\_\_







**NORA LIGHTING, INC.**

6505 Gayhart St.  
Commerce, CA 90040  
Tel: 800.686.6672  
Fax: 800.500.9955  
Email: [nora@NoraLighting.com](mailto:nora@NoraLighting.com)  
[www.NoraLighting.com](http://www.NoraLighting.com)

**DOMESTIC FACILITIES:**

Cincinnati, OH  
Dallas, TX  
Denver, CO  
Detroit, MI  
Los Angeles, CA  
Louisville, KY  
Nashville, TN  
New York, NY  
Tampa, FL

**INTERNATIONAL SALES:**

6505 Gayhart St.  
Commerce, CA 90040  
Tel: 323.767.2600  
Fax: 323.722.3677

The products shown in this catalog are covered by USA and International patents.  
Specifications subject to change without notice.