

NORA[®]
LIGHTING

TRACK LIGHTING

LED, LOW VOLTAGE, LINE VOLTAGE



LED Track Heads



MAC LED TRACK HEAD, 700lm or 1100lm

| SERIES | CCT / CRI | LUMENS / WATTAGE | FINISH | ADAPTER |
|------------------------|----------------------------|------------------------|-----------------|-----------------|
| NTE-870L MAC | 927X 2700K / 90 CRI | 10 700lm / 10W | B Black | (blank) H-Style |
| | 930X 3000K / 90 CRI | | S Silver | /J J-Style |
| | 935X 3500K / 90 CRI | | W White | /L L-Style |
| | 940X 4000K / 90 CRI | | | |
| NTE-875L MAC XL | 927X 2700K / 90 CRI | 18 1100lm / 18W | B Black | (blank) H-Style |
| | 930X 3000K / 90 CRI | | S Silver | /J J-Style |
| | 935X 3500K / 90 CRI | | W White | /L L-Style |
| | 940X 4000K / 90 CRI | | | |

FEATURES

- 700lm or 1100lm LED output
- 2700K, 3000K, 3500K or 4000K @ 90 CRI
- Field changeable optics included (Spot included and Flood installed)
- AC LED - no LED driver and small appearance
- ELV dimming
- H-Style, J-Style or L-Style Track Adapter
- ENERGY STAR certified



MAY LED TRACK HEAD, 800lm

| SERIES | CCT / CRI | LUMENS / WATTAGE | FINISH | ADAPTER |
|---------------------|---------------------------|-----------------------|----------------|-----------------|
| NTE-860L MAY | 927 2700K / 90 CRI | 10 800lm / 10W | B Black | (blank) H-Style |
| | 930 3000K / 90 CRI | | W White | /J J-Style |
| | 935 3500K / 90 CRI | | | /L L-Style |
| | 940 4000K / 90 CRI | | | |

FEATURES

- 800lm LED output
- 2700K, 3000K, 3500K or 4000K @ 90 CRI
- 35° Narrow Flood
- AC LED - no LED driver and small appearance
- Triac or ELV dimming
- H-Style, J-Style or L-Style Track Adapter
- ENERGY STAR certified



DIPPER LED TRACK HEAD, 1000lm or 2300lm

| LENGTH / LUMENS / WATTAGE | BEAM SPREAD | CCT / CRI | FINISH |
|--------------------------------------|-------------|--------------------------|-----------------|
| NTE-880315 8" / 1000lm / 15W | Wall Wash | 30 3000K / 90 CRI | B Black |
| NTE-880330 12" / 2300lm / 30W | | 35 3500K / 90 CRI | S Silver |
| | | 40 4000K / 90 CRI | W White |

DIPPER LED MONOPOINT, 1000lm or 2300lm

| LENGTH / LUMENS / WATTAGE | BEAM SPREAD | CCT / CRI | FINISH |
|---------------------------------------|-------------|--------------------------|-----------------|
| NTEC-880315 8" / 1000lm / 15W | Wall Wash | 30 3000K / 90 CRI | B Black |
| NTEC-880330 12" / 2300lm / 30W | | 35 3500K / 90 CRI | S Silver |
| | | 40 4000K / 90 CRI | W White |

FEATURES

- 8" or 12" Lengths
- 1000lm or 2300lm LED output
- 3000K, 3500K or 4000K @ 90 CRI
- Adjustable up to 135°
- Wall Wash distribution for indirect lighting
- Round monopoint canopy available (NT-380)
- Triac or ELV dimming



LED Track Heads

T-WASH LED TRACK HEAD, 3000lm or 4460lm

| LENGTH / LUMENS / WATTAGE | CCT / CRI | FINISH | ADAPTER |
|--|--------------------------|-----------------|-----------------|
| NTE-89033 12" Yoke / 3000lm / 33W | 30 3000K / 80 CRI | B Black | (blank) H-Style |
| | 40 4000K / 80 CRI | S Silver | |
| | | W White | |
| NTE-89066 24" Arm / 4460lm / 66W | 30 3000K / 80 CRI | B Black | (blank) H-Style |
| | 40 4000K / 80 CRI | S Silver | |
| | | W White | |

FEATURES

- 12" or 24" Lengths
- 3000lm or 4460lm LED output
- 3000K or 4000K @ 80 CRI
- 358° horizontal / 90° vertical rotation
- Optional louver accessories
- Wall Wash distribution for indirect lighting
- Triac or ELV dimming

T-LINE LINEAR LED TRACK HEAD, 1600lm or 3200lm

| LENGTH / LUMENS / WATTAGE | COLOR TEMPERATURE | FINISH | ADAPTER |
|-----------------------------------|---|-----------------|-----------------|
| NTE-LIN2 2' / 1600lm / 20W | TW Tunable White (3000K / 3500K / 4000K) | B Black | (blank) H-Style |
| NTE-LIN4 4' / 3200lm / 40W | | S Silver | |
| | | W White | |

FEATURES

- 2' or 4' Lengths
- 1600lm or 3200lm LED output
- Field Selectable Color Temperature 3000K, 3500K or 4000K @ 90 CRI
- Optional lenses and visor accessories
- Standard lens provides symmetrical distribution
- ELV dimming
- ENERGY STAR certified

JASON LED ROUND TRACK HEAD, 1400lm to 2800lm

| LUMENS / WATTAGE | BEAM SPREAD | CCT / CRI | FINISH |
|-------------------------------|---------------------------|---------------------------|---------------------------------|
| NTE-85518 1400lm / 18W | S 24° Spot | 30 3000K / 80 CRI | B Black |
| NTE-85526 2200lm / 26W | M 40° Narrow Flood | 35 3500K / 80 CRI | S Silver (Special Order) |
| NTE-85533 2800lm / 38W | F 60° Flood | 40 4000K / 80 CRI | W White |
| | | 930 3000K / 90 CRI | |
| | | 935 3500K / 90 CRI | |
| | | 940 4000K / 90 CRI | |

JASON LED SQUARE TRACK HEAD, 1400lm to 2800lm

| LUMENS / WATTAGE | BEAM SPREAD | CCT / CRI | FINISH |
|-------------------------------|---------------------------|---------------------------|-----------------|
| NTE-85418 1400lm / 18W | S 24° Spot | 35 3500K / 80 CRI | B Black |
| NTE-85426 2200lm / 26W | M 40° Narrow Flood | | W White |
| | F 60° Flood | | |
| NTE-85433 2800lm / 38W | S 24° Spot | 30 3000K / 80 CRI | S Silver |
| | M 40° Narrow Flood | 35 3500K / 80 CRI | |
| | F 60° Flood | 40 4000K / 80 CRI | |
| NTE-85433 2800lm / 38W | S 24° Spot | 935 3500K / 90 CRI | W White |
| | M 40° Narrow Flood | | |
| | F 60° Flood | | |

FEATURES

- 1400lm, 2200lm or 2800lm LED output
- 3000K, 3500K or 4000K @ 80 or 90 CRI
- 24° Spot, 40° Narrow Flood or 60° Flood
- Optional accessories available
- Triac or ELV dimming
- DLC Listed

12" T-Wash



24" T-Wash



2' T-Line



4' T-Line



Jason Round



Jason Square



AIDEN LED TRACK HEAD, 800lm

| COLOR TEMPERATURE / CRI | BEAM SPREAD | LUMENS / WATTAGE | FINISH | ADAPTER |
|-----------------------------------|---|------------------------|---|-------------------|
| NTE-850L27 2700K / 80 CRI | X 25° Spot included 43° Flood installed | 10A 800lm / 10W | B Black S Silver W White | (blank) H-Style |
| NTE-850L927 2700K / 90 CRI | | | | /J J-Style |
| NTE-850L30 3000K / 80 CRI | | | | |
| NTE-850L930 3000K / 90 CRI | | | | |
| NTE-850L40 4000K / 80 CRI | | | | |
| NTE-850L940 4000K / 90 CRI | | | | |

FEATURES

- 800lm LED output
- 2700K, 3000K or 4000K @ 80 or 90 CRI
- Field changeable optics included (25° Spot and 43° Flood - installed)
- Includes heat sink cap for alternate appearance
- ELV dimming
- Round monopoint canopy available (NT-379)
- H-Style or J-Style Track Adapter



AIDEN LED TRACK HEAD, 1150lm

| COLOR TEMPERATURE / CRI | BEAM SPREAD | LUMENS / WATTAGE | FINISH | ADAPTER |
|-----------------------------------|---|------------------------|---|-----------------|
| NTE-845L30 3000K / 80 CRI | X 19° Spot included 40° Flood installed | 15 1150lm / 15W | B Black S Silver W White | (blank) H-Style |
| NTE-845L930 3000K / 90 CRI | | | | |
| NTE-845L940 4000K / 90 CRI | | | | |

FEATURES

- 1150lm LED output
- 3000K or 4000K @ 80 or 90 CRI
- Triac or ELV dimming
- Field changeable optics included (19° Spot and 40° Flood - installed)



AIDEN LED TRACK HEAD, 2200lm

| COLOR TEMPERATURE / CRI | BEAM SPREAD | LUMENS / WATTAGE | FINISH | ADAPTER |
|-----------------------------------|---|------------------------|---|-----------------|
| NTE-842L30 3000K / 80 CRI | S 23° Spot F 43° Flood | 35 2200lm / 35W | B Black S Silver W White | (blank) H-Style |
| NTE-842L930 3000K / 90 CRI | | | | |
| NTE-842L40 4000K / 80 CRI | | | | |
| NTE-842L940 4000K / 90 CRI | | | | |

FEATURES

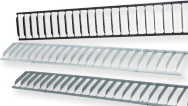
- 2200lm LED output
- 3000K or 4000K @ 80 or 90 CRI
- 23° Spot OR 43° Flood - must specify
- Optional barn door accessory
- Triac or ELV dimming



Track Head Accessories & Monopoints

MONOPOINT CANOPIES FOR TRACK HEADS

| ITEM # | DESCRIPTION |
|--|---|
| NT-319B | Square Monopoint Canopy, Black finish |
| NT-319S | Square Monopoint Canopy, Silver finish |
| NT-319W | Square Monopoint Canopy, White finish |
| NT-366B | Round Monopoint Canopy, Black finish |
| NT-366S | Round Monopoint Canopy, Silver finish |
| NT-366W | Round Monopoint Canopy, White finish |
| NT-379B | Round Monopoint Canopy, Black finish |
| NT-379S | Round Monopoint Canopy, Silver finish |
| NT-379W | Round Monopoint Canopy, White finish |
| • Compatible with NTE-850 only | |
| NT-337B | Square Monopoint Canopy, Black finish |
| NT-337S | Square Monopoint Canopy, Silver finish |
| NT-337W | Square Monopoint Canopy, White finish |
| • Compatible Versa Track Heads only | |
| NT-380B | Round Monopoint Canopy, Black finish |
| NT-380S | Round Monopoint Canopy, Silver finish |
| NT-380W | Round Monopoint Canopy, White finish |
| • Compatible Track Heads: NTE-854, NTE-855, NTE-880, NTH-910, NTH-920, NTH-930 | |
| NT-374B | 4" Retrofit Monopoint Adapter, Black finish |
| NT-374W | 4" Retrofit Monopoint Adapter, White finish |
| • 75W max. | |



TRACK HEAD ACCESSORIES

| ITEM # | DESCRIPTION |
|--|---|
| NT-333 | Slope Adapter for H-Style Head to H-Track |
| NT-333/L | Slope Adapter for H-Style Head to L-Track |
| NT-334 | Slope Adapter for J-Style Head to H-Track |
| NT-335 | Slope Adapter for H-Style Head to J-Track |
| • Finish: Black, Silver or White | |
| NT-322/12 | 12" Track Head Extension with Connector |
| NT-322 | 18" Track Head Extension with Connector |
| NT-323 | 24" Track Head Extension with Connector |
| NT-324 | 36" Track Head Extension with Connector |
| NT-325 | 48" Track Head Extension with Connector |
| • Finish: Black, Silver or White | |
| • Adapter: H-Style, J-Style or L-Style | |
| NT-330B | 18" Flexible Extension Rod, Black finish |
| NT-330W | 18" Flexible Extension Rod, White finish |
| • Adapter: H-Style, J-Style or L-Style | |
| NTR-100B | Blue MR16 Silicone Ring |
| NTR-100W | White MR16 Silicone Ring |
| • Compatible Track Heads: NTH-618, NTH-619 | |
| NM-100/MR16 | MR16 Colored Lens/Filter |
| • Finish: Blue, Clear, Frosted, Green, Red or Yellow | |
| NTE-875HC | Honeycomb Louver for NTE-875 |
| NTE-855HC | Honeycomb Louver for NTE-854 or NTE-855 |
| NT-362 | Honeycomb Louver for MR16 Track Heads |
| NTEL-8903 | 12" Louver Accessory for NTE-89033 |
| NTEL-8906 | 24" Louver Accessory for NTE-89066 |
| • Finish: Black, Silver or White | |
| NTE-LIN2SASYLENS | 2' Single Asymmetrical Lens |
| NTE-LIN2DASYLENS | 2' Double Asymmetrical Lens |
| NTE-LIN2VISB | 2' Visor, Black finish |
| NTE-LIN2VISS | 2' Visor, Silver finish |
| NTE-LIN2VISW | 2' Visor, White finish |
| • Compatible with NTE-LIN2TW only | |
| NTE-LIN4SASYLENS | 4' Single Asymmetrical Lens |
| NTE-LIN4DASYLENS | 4' Double Asymmetrical Lens |
| NTE-LIN4VISB | 4' Visor, Black finish |
| NTE-LIN4VISS | 4' Visor, Silver finish |
| NTE-LIN4VISW | 4' Visor, White finish |
| • Compatible with NTE-LIN4TW only | |
| NTE-855SN | Black Snoot for NTE-854 or NTE-855 |
| NTE-855SNWW | Black Directional Shield for NTE-854 or NTE-855 |
| NTE-855CG | Clear Glass for NTE-854 or NTE-855 |
| NTE-855FG | Frosted Glass for NTE-854 or NTE-855 |
| NTE-855REFL24 | 24° Optic for NTE-854 or NTE-855 |
| NTE-855REFL40 | 40° Optic for NTE-854 or NTE-855 |
| NTE-855REFL60 | 60° Optic for NTE-854 or NTE-855 |
| NTE-855BD | Barndoor for NTE-855 |
| NT-339CP | Barndoor for NTE-842 |
| • Finish: Black, Silver or White | |

Track Packs



MAC Track Pack



MAC LED TRACK PACK, 700lm or 1100lm

| SERIES | CCT / CRI | FINISH |
|------------------------|----------------------------|-----------------|
| NTLE-870 MAC | 927X 2700K / 90 CRI | B Black |
| | 930X 3000K / 90 CRI | S Silver |
| | 935X 3500K / 90 CRI | W White |
| | 940X 4000K / 90 CRI | |
| NTLE-875 MAC XL | 927X 2700K / 90 CRI | B Black |
| | 930X 3000K / 90 CRI | S Silver |
| | 935X 3500K / 90 CRI | W White |
| | 940X 4000K / 90 CRI | |

FEATURES

- 4' track and power feed included
- 700lm or 1100lm LED output
- 2700K, 3000K, 3500K or 4000K @ 90 CRI
- AC LED - no LED driver and small appearance
- Field changeable optics included (Spot included and Flood installed)
- ELV dimming
- ENERGY STAR certified

MAY Track Pack



MAY LED TRACK PACK, 800lm

| SERIES | CCT / CRI | FINISH |
|---------------------|---------------------------|----------------|
| NTLE-860 MAY | 927 2700K / 90 CRI | B Black |
| | 930 3000K / 90 CRI | W White |
| | 935 3500K / 90 CRI | |
| | 940 4000K / 90 CRI | |

FEATURES

- 4' track and power feed included
- 800lm LED output
- 2700K, 3000K, 3500K or 4000K @ 90 CRI
- AC LED - no LED driver and small appearance
- Triac or ELV dimming
- ENERGY STAR certified

Aiden Track Pack



AIDEN LED TRACK PACKS, 800lm, 1150lm or 2200lm

| SERIES | CCT / CRI | BEAM SPREAD | FINISH |
|------------------------|---------------------------|---------------------------|-----------------|
| NTLE-850 800lm | 27 2700K / 80 CRI | (blank) 25° Spot included | B Black |
| | 927 2700K / 90 CRI | 43° Flood installed | S Silver |
| | 30 3000K / 80 CRI | | W White |
| | 930 3000K / 90 CRI | | |
| | 40 4000K / 80 CRI | | |
| | 940 4000K / 90 CRI | | |
| NTLE-845 1150lm | 30 3000K / 80 CRI | (blank) 19° Spot included | B Black |
| | 930 3000K / 90 CRI | 40° Flood installed | S Silver |
| | 940 4000K / 90 CRI | | W White |
| NTLE-842 2200lm | 30 3000K / 80 CRI | S 23° Spot | B Black |
| | 930 3000K / 90 CRI | F 43° Flood | S Silver |
| | 40 4000K / 80 CRI | | W White |
| | 940 4000K / 90 CRI | | |
| | | | |

FEATURES

- 4' track and power feed included
- 2700K, 3000K or 4000K @ 80 or 90 CRI
- Triac or ELV dimming



Track Packs

BR/PAR30 Step Cylinder Track Pack

| SERIES | FINISH |
|---|--|
| NTL-150 (3) BR/PAR30 Step Cylinder Track Heads | B Black BZ Bronze W White |

FEATURES

- 4' track and power feed included
- 75W BR/PAR30 LED or Incandescent max.
- Additional track and accessories can be added



Step Cylinder Track Pack

BR/PAR30 Flatback Cylinder Track Pack

| SERIES | FINISH |
|--|----------------|
| NTL-151 (3) BR/PAR30 Flatback Cylinder Track Heads | B Black |
| NTL-151/2H (2) BR/PAR30 Flatback Cylinder Track Heads | W White |

FEATURES

- 4' track and power feed included
- 75W BR/PAR30 LED or Incandescent max.
- Additional track and accessories can be added



Flatback Cylinder Track Pack

BR/PAR30 Roundback Cylinder Track Pack

| SERIES | FINISH |
|---|---------------|
| NTL-156 (3) BR/PAR30 Roundback Cylinder Track Heads | (blank) White |
| NTL-156/2H (2) BR/PAR30 Roundback Cylinder Track Heads | |
| NTL-156/4H (4) BR/PAR30 Roundback Cylinder Track Heads | |

FEATURES

- 4' track and power feed included
- 75W BR/PAR30 LED or Incandescent max.
- Additional track and accessories can be added



Roundback Cylinder Track Pack

REVO Motorized Track Pack

| SERIES | FINISH |
|--|----------------------------------|
| NTH4K-REV0150 (3) BR/PAR Motorized REVO Track Heads | B Black W White |

FEATURES

- 4' track and power feed included
- 90W PAR20/PAR30/PAR38 LED or Incandescent max.
- Remote control included
- Additional track and accessories can be added



REVO Track Pack

BR/PAR30 Gimbal Ring Track Pack

| SERIES | FINISH |
|--|---|
| NTL-158 (3) BR/PAR30 Gimbal Ring Track Heads | B Black |
| NTL-158/4H (4) BR/PAR30 Gimbal Ring Track Heads | BZ Bronze N Natural Metal S Silver W White |

FEATURES

- 4' track and power feed included
- 75W BR/PAR30 LED or Incandescent max.
- Additional track and accessories can be added



Gimbal Ring Track Pack

Low Voltage Track Heads



*Versa
V-Tech*

Versa V-TECH Dual Track Head with Dimmable Driver

| SERIES | FINISH | ADAPTER |
|-------------------------------|----------------------------------|-----------------|
| NTLE-8265 Versa V-Tech | B Black W White | (blank) H-Style |

FEATURES

- 12V MR16 LED or Halogen compatible
- ELV dimmable electronic driver/transformer
- 3W-25W max. per head



*Versa
Cube*

Versa Cube Track Head with Dimmable Driver

| SERIES | FINISH | ADAPTER |
|----------------------------|------------------------------------|-----------------|
| NTLE-202 Versa Cube | B Black W/A White | (blank) H-Style |

FEATURES

- 12V MR16 LED or Halogen compatible
- ELV dimmable electronic driver/transformer
- 3W-50W max.



*Versa
Cylinder*

Versa Cylinder Track Head with Dimmable Driver

| SERIES | FINISH | ADAPTER |
|--------------------------------|--|-----------------|
| NTLE-203 Versa Cylinder | B/A Black BZ Bronze W/A White | (blank) H-Style |

FEATURES

- 12V MR16 LED or Halogen compatible
- ELV dimmable electronic driver/transformer
- 3W-50W max.
- Custom stem lengths available from 12" to 48"



*Versa
Gimbal Ring*

Versa Gimbal Ring Track Head with Dimmable Driver

| SERIES | FINISH | ADAPTER |
|-----------------------------------|--|-----------------|
| NTLE-207 Versa Gimbal Ring | B/A Black BZ Bronze W/A White | (blank) H-Style |

FEATURES

- 12V MR16 LED or Halogen compatible
- ELV dimmable electronic driver/transformer
- 3W-50W max.
- Custom stem lengths available from 12" to 48"



Low Voltage Track Heads

Versa Wireback Track Head with Dimmable Driver

| SERIES | FINISH | ADAPTER |
|--------------------------------|----------------------------------|-----------------|
| NTLE-213 Versa Wireback | B Black W White | (blank) H-Style |

FEATURES

- 12V MR16 LED or Halogen compatible
- ELV dimmable electronic driver/transformer
- 3W-50W max.
- Custom stem lengths available from 12" to 48"



Versa Wireback

Versa Roundback Track Head with Dimmable Driver

| SERIES | FINISH | ADAPTER |
|---------------------------------|------------------------------------|-----------------|
| NTLE-214 Versa Roundback | B Black W/A White | (blank) H-Style |

FEATURES

- 12V MR16 LED or Halogen compatible
- ELV dimmable electronic driver/transformer
- 3W-50W max.
- Custom stem lengths available from 12" to 48"



Versa Roundback

Versa Track Head Accessories

| DESCRIPTION | FINISH |
|--|--|
| NM-100 MR16 Colored Lens / Filter | B/MR16 Blue C/MR16 Clear F/MR16 Frosted G/MR16 Green R/MR16 Red Y/MR16 Yellow |
| NT-362 MR16 Honeycomb Louver | (blank) Black |
| NT-337 Square Monopoint for Versa Track Heads | B Black S Silver W White |





Michaelangelo™

Michaelangelo™ Framing Projector MR16 GU10 Track Head

| SERIES | FINISH | ADAPTER |
|------------------------------|-----------------|---|
| NTH-613 Michaelangelo | S Silver | (blank) H-Style /J J-Style /L L-Style |

FEATURES

- 50W MR16 GU10 LED or Halogen max.
- Filters, monopoints, extensions available



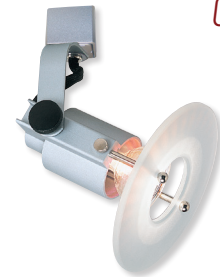
Galileo™

Galileo™ Dual Ring MR16 GU10 Track Head

| SERIES | FINISH | ADAPTER |
|------------------------|-----------------|---|
| NTH-614 Galileo | S Silver | (blank) H-Style /J J-Style /L L-Style |

FEATURES

- 50W MR16 GU10 LED or Halogen max.
- Custom stem lengths available from 12" to 48"
- Filters, monopoints, extensions available



Copernicus™

Copernicus™ Glass Disk MR16 GU10 Track Head

| SERIES | FINISH | ADAPTER |
|---------------------------|-----------------|---|
| NTH-616 Copernicus | S Silver | (blank) H-Style /J J-Style /L L-Style |

FEATURES

- 50W MR16 GU10 LED or Halogen max.
- Custom stem lengths available from 12" to 48"
- Filters, monopoints, extensions available



Italia™

Italia™ MR16 GU10 Track Head

| SERIES | FINISH | ADAPTER |
|-----------------------|-----------------------------------|---|
| NTH-618 Italia | B Black S Silver | (blank) H-Style /J J-Style /L L-Style |

FEATURES

- 50W MR16 GU10 LED or Halogen max.
- Custom stem lengths available from 12" to 48"
- Filters, monopoints, extensions available



Metro™

Metro™ MR16 GU10 Track Head

| SERIES | FINISH | ADAPTER |
|-----------------------|-----------------------------------|---|
| NTH-619 Italia | B Black S Silver | (blank) H-Style /J J-Style /L L-Style |

FEATURES

- 50W MR16 GU10 LED or Halogen max.
- Custom stem lengths available from 12" to 48"



MR16 GU10 Track Heads

MR16 GU10 Roundback with Black Baffle Track Head

| SERIES | FINISH | ADAPTER |
|------------------------------------|----------------------------------|---|
| NTH-694 MR16 GU10 Roundback | B Black W White | (blank) H-Style /J J-Style /L L-Style |

FEATURES

- 50W MR16 GU10 LED or Halogen max.
- Custom stem lengths available from 12" to 48"
- Filters, monopoints, extensions available

MR16 Roundback



MR16 GU10 Telescope Track Head

| SERIES | FINISH | ADAPTER |
|------------------------------------|----------------------------------|---|
| NTH-695 MR16 GU10 Telescope | B Black W White | (blank) H-Style /J J-Style /L L-Style |

FEATURES

- 50W MR16 GU10 LED or Halogen max.
- Custom stem lengths available from 12" to 48"
- Filters, monopoints, extensions available

Telescope



MR16 GU10 Gimbal Track Head

| SERIES | FINISH | ADAPTER |
|-----------------------|----------------------------------|---|
| NTH-697 Gimbal | B Black W White | (blank) H-Style /J J-Style /L L-Style |

FEATURES

- 50W MR16 GU10 LED or Halogen max.
- Custom stem lengths available from 12" to 48"
- Filters, monopoints, extensions available

Gimbal



MR16 GU10 Architectural Cylinder Track Head

| SERIES | FINISH | ADAPTER |
|---------------------------------------|----------------------------------|-----------------|
| NTH-695 Architectural Cylinder | B Black W White | (blank) H-Style |

FEATURES

- 50W MR16 GU10 LED or Halogen max.
- Round monopoint canopy available (NT-380)

Architectural Cylinder



REVO Remote Controlled Track Head

| SERIES | FINISH | ADAPTER |
|------------------------|----------------------------------|-----------------|
| NTH-REV150 REVO | B Black W White | (blank) H-Style |

NTH-REVHHR REVO Remote Control

FEATURES

- 90W PAR20, PAR30, PAR38 LED or Incand. max.
- Controlled with remote control (NTH-REVHHR)

REVO



PAR Track Heads



*Architectural
Cylinder*

PAR Architectural Cylinder Track Heads

| SERIES | FINISH | ADAPTER |
|---|----------------|-----------------|
| NTH-920 PAR20 Architectural Cylinder | B Black | (blank) H-Style |
| NTH-930 PAR30 Architectural Cylinder | W White | |

FEATURES

- 50W R/PAR20 LED or Incandescent max.
- 75W BR/PAR30 LED or Incandescent max.
- Round monopoint canopy available (NT-380)



*Flatback
Cylinder*

PAR Flatback Cylinder with Black Baffle Track Heads

| SERIES | FINISH | ADAPTER |
|---|------------------------|--|
| NTH-101 R/PAR20 Flatback Cylinder with Black Baffle | B Black | (blank) H-Style |
| | W White | /J J-Style /L L-Style |
| NTH-102 BR/PAR30 Flatback Cylinder with Black Baffle | B/A Black | (blank) H-Style |
| | W/A White | /J J-Style /L L-Style |
| NTH-113 BR40/PAR38 Flatback Cylinder with Black Baffle | B Black | (blank) H-Style |
| | N Natural Metal | /J J-Style |
| | W White | /L L-Style |

FEATURES

- 50W R/PAR20 LED or Incandescent max.
- 75W BR/PAR30 LED or Incandescent max.
- 150W BR40/PAR38 LED or Incandescent max.



*Roundback
Cylinder*

PAR Roundback Cylinder with Black Baffle Track Head

| SERIES | FINISH | ADAPTER |
|--|------------------------|--|
| NTH-105 R/PAR20 Roundback Cylinder with Black Baffle | B Black | (blank) H-Style |
| | BZ Bronze | /J J-Style |
| | W White | /L L-Style |
| NTH-106 BR/PAR30 Roundback Cylinder with Black Baffle | B/A Black | (blank) H-Style |
| | BZ Bronze | /J J-Style |
| | N Natural Metal | /L L-Style |
| | W White | |
| NTH-131 BR40/PAR38 Roundback Cylinder with Black Baffle | B Black | (blank) H-Style |
| | W/A White | /J J-Style /L L-Style |

FEATURES

- 50W R/PAR20 LED or Incandescent max.
- 75W BR/PAR30 LED or Incandescent max.
- 100W BR40/PAR38 LED or Incandescent max.



Shroud

PAR Shroud Track Head

| SERIES | FINISH | ADAPTER |
|----------------------------------|-----------------|-------------------|
| NTH-149 BR/PAR30 Shroud | B Black | (blank) H-Style |
| NTH-150 BR40/PAR38 Shroud | S Silver | /J J-Style |
| | W White | /L L-Style |

FEATURES

- 75W BR/PAR30 LED or Incandescent max.
- 250W BR40/PAR38 LED or Incandescent max.



PAR Track Heads

PAR Step Cylinder Track Heads

| SERIES | FINISH | ADAPTER |
|---|--|---|
| NTH-122 R/PAR20 Designer Step Cylinder | B Black BZ Bronze W White | (blank) H-Style /J J-Style /L L-Style |
| NTH-103 R/PAR20 Step Cylinder with Black Baffle | B/A Black W/A White | (blank) H-Style /J J-Style /L L-Style |
| NTH-104 BR/PAR30 Step Cylinder with Black Baffle | B/A Black BZ Bronze W White | (blank) H-Style /J J-Style /L L-Style |
| NTH-151 BR40/PAR38 Step Cylinder with Black Baffle | B Black S Silver W White | (blank) H-Style /J J-Style /L L-Style |

FEATURES

- 50W R/PAR20 LED or Incandescent max.
- 75W BR/PAR30 LED or Incandescent max.
- 250W BR40/PAR38 LED or Incandescent max.

PAR Rear Loading Gimbal Ring Track Heads

| SERIES | FINISH | ADAPTER |
|--|---|---|
| NTH-112 R/PAR20 Rear Loading Gimbal Ring | B/A Black BZ Bronze N Natural Metal W White | (blank) H-Style /J J-Style /L L-Style |
| NTH-107 BR/PAR30 Rear Loading Gimbal Ring | B/A Black BZ Bronze N Natural Metal S Silver W/A White | (blank) H-Style /J J-Style /L L-Style |
| NTH-108 BR40/PAR38 Rear Loading Gimbal Ring | B/A Black BZ Bronze N Natural Metal S Silver W/A White | (blank) H-Style /J J-Style /L L-Style |

FEATURES

- 50W R/PAR20 LED or Incandescent max.
- 75W BR/PAR30 LED or Incandescent max.
- 150W BR40/PAR38 LED or Incandescent max.

PAR Front Loading Gimbal Ring Track Heads

| SERIES | FINISH | ADAPTER |
|---|------------------------------------|---|
| NTH-146 R/PAR20 Front Loading Gimbal Ring | B Black W White | (blank) H-Style /J J-Style /L L-Style |
| NTH-147 BR/PAR30 Front Loading Gimbal Ring | B/A Black W White | (blank) H-Style /J J-Style /L L-Style |
| NTH-148 BR40/PAR38 Front Loading Gimbal Ring | B/A Black W White | (blank) H-Style /J J-Style /L L-Style |

FEATURES

- 50W R/PAR20 LED or Incandescent max.
- 75W BR/PAR30 LED or Incandescent max.
- 150W BR40/PAR38 LED or Incandescent max.

Step Cylinder



Rear Loading Gimbal



Front Loading Gimbal



PAR Track Heads



*Low Profile
Universal*

Low Profile Universal Track Head

| SERIES | FINISH | ADAPTER |
|--------------------------------------|----------------|---|
| NTH-115 Low Profile Universal | W White | (blank) H-Style /J J-Style /L L-Style |

FEATURES

- 50W R/PAR20 LED or Incandescent max.
- 75W BR/PAR30 LED or Incandescent max.
- 150W BR40/PAR38 LED or Incandescent max.



*Roundback
Universal*

Universal Track Heads

| SERIES | FINISH | ADAPTER |
|--|----------------------------------|---|
| NTH-119 Roundback Universal with Round Knob | S White | (blank) H-Style /J J-Style /L L-Style |
| NTH-139 Flatback Universal with Ribbed Knob | B Black W White | (blank) H-Style /J J-Style /L L-Style |

FEATURES

- 50W R/PAR20 LED or Incandescent max.
- 75W BR/PAR30 LED or Incandescent max.
- 100W BR40/PAR38 LED or Incandescent max.



*Adjustable Socket
Universal*

Adjustable Socket Universal Track Head

| SERIES | FINISH | ADAPTER |
|--|--|---|
| NTH-109 Adjustable Socket Universal | B/A Black N Natural Metal W/A White | (blank) H-Style /J J-Style /L L-Style |

FEATURES

- 50W R/PAR20 LED or Incandescent max.
- 75W BR/PAR30 LED or Incandescent max.
- 250W BR40/PAR38 LED or Incandescent max.



*Truly
Universal*

Truly Universal Track Head

| SERIES | FINISH | ADAPTER |
|--------------------------------|----------------------------------|---|
| NTH-138 Truly Universal | B Black W White | (blank) H-Style /J J-Style /L L-Style |

FEATURES

- 50W R/PAR20 LED or Incandescent max.
- 75W BR/PAR30 LED or Incandescent max.
- 150W BR40/PAR38 LED or Incandescent max.



Duet Dual Head

PAR Duet Dual Track Heads

| SERIES | FINISH | ADAPTER |
|-------------------------------------|----------------|-----------------|
| NTH-883 PAR30 Duet Dual Head | B Black | (blank) H-Style |
| NTH-884 PAR38 Duet Dual Head | W White | |

FEATURES

- (2) 75W PAR30 LED or Incandescent max.
- (2) 150W PAR38 LED or Incandescent max.



PAR Track Heads

PAR Classic Cylinder Track Heads

| SERIES | FINISH | ADAPTER |
|--|------------------|-------------------|
| NTH-110 R/PAR20 Classic Cylinder | B Black | (blank) H-Style |
| | BZ Bronze | /J J-Style |
| | W White | /L L-Style |
| NTH-111 BR/PAR30 Classic Cylinder | BZ Bronze | (blank) H-Style |
| | W White | /J J-Style |
| | | /L L-Style |

FEATURES

- 50W R/PAR20 LED or Incandescent max.
- 75W BR/PAR30 LED or Incandescent max.

Classic Cylinder



PAR Cone Track Heads

| SERIES | FINISH | ADAPTER |
|--------------------------------|------------------|--|
| NTH-124 R/PAR20 Cone | B Black | (blank) H-Style |
| | BZ Bronze | /J J-Style |
| | S Silver | /L L-Style |
| | W White | |
| NTH-125 BR/PAR30 Cone | B Black | (blank) H-Style |
| | BZ Bronze | /J J-Style |
| | S Silver | /L L-Style |
| | W White | |
| NTH-126 BR40/PAR38 Cone | B Black | (blank) H-Style |
| | W White | /J J-Style /L L-Style |

FEATURES

- 50W R/PAR20 LED or Incandescent max.
- 75W BR/PAR30 LED or Incandescent max.
- 150W BR40/PAR38 LED or Incandescent max.

Cone



PAR Belgium™ Track Head

| SERIES | FINISH | ADAPTER |
|-------------------------------|-----------------|-------------------|
| NTH-132 PAR30 Belgium™ | B Black | (blank) H-Style |
| NTH-133 PAR38 Belgium™ | S Silver | /J J-Style |
| | W White | /L L-Style |

FEATURES

- 75W PAR30 LED or Incandescent max.
- 90W PAR38 LED or Incandescent max.

Belgium™



PAR38 High-Tech Wire Track Head

| SERIES | FINISH | ADAPTER |
|-------------------------------------|----------------|--|
| NTH-178 PAR38 High-Tech Wire | B Black | (blank) H-Style |
| | W White | /J J-Style /L L-Style |

FEATURES

- 250W PAR38 LED or Incandescent max.

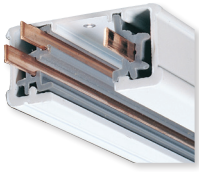
High-Tech Wire



Track System & Components



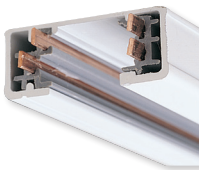
ONE-CIRCUIT TRACK



| ITEM # | DESCRIPTION |
|------------------|---|
| NT-301B | 2' One-Circuit Track, Black finish |
| NT-301BZ | 2' One-Circuit Track, Bronze finish |
| NT-301N | 2' One-Circuit Track, Natural Metal finish |
| NT-301S | 2' One-Circuit Track, Silver finish |
| NT-301W | 2' One-Circuit Track, White finish |
| NT-302B | 4' One-Circuit Track, Black finish |
| NT-302BZ | 4' One-Circuit Track, Bronze finish |
| NT-302N | 4' One-Circuit Track, Natural Metal finish |
| NT-302S | 4' One-Circuit Track, Silver finish |
| NT-302W | 4' One-Circuit Track, White finish |
| NT-303B | 6' One-Circuit Track, Black finish |
| NT-303N | 6' One-Circuit Track, Natural Metal finish |
| NT-303S | 6' One-Circuit Track, Silver finish |
| NT-303W | 6' One-Circuit Track, White finish |
| NT-304B | 8' One-Circuit Track, Black (96-1/4") |
| NT-304BA | 8' One-Circuit Track, Black (92-3/8") |
| NT-304BZ | 8' One-Circuit Track, Bronze (96-1/4") |
| NT-304BZA | 8' One-Circuit Track, Bronze (92-3/8") |
| NT-304N | 8' One-Circuit Track, Natural Metal (96-1/4") |
| NT-304S | 8' One-Circuit Track, Silver finish (96-1/4") |
| NT-304SA | 8' One-Circuit Track, Silver finish (92-3/8") |
| NT-304W | 8' One-Circuit Track, White finish (96-1/4") |
| NT-304WA | 8' One-Circuit Track, White finish (92-3/8") |

| | |
|----------------|--------------------------------------|
| NT-331B | 12' One-Circuit Track, Black finish |
| NT-331S | 12' One-Circuit Track, Silver finish |
| NT-331W | 12' One-Circuit Track, White finish |

TWO-CIRCUIT TRACK



| ITEM # | DESCRIPTION |
|-----------------|-------------------------------------|
| NT-2301B | 2' Two-Circuit Track, Black finish |
| NT-2301S | 2' Two-Circuit Track, Silver finish |
| NT-2301W | 2' Two-Circuit Track, White finish |
| NT-2302B | 4' Two-Circuit Track, Black finish |
| NT-2302S | 4' Two-Circuit Track, Silver finish |
| NT-2302W | 4' Two-Circuit Track, White finish |
| NT-2303B | 6' Two-Circuit Track, Black finish |
| NT-2303S | 6' Two-Circuit Track, Silver finish |
| NT-2303W | 6' Two-Circuit Track, White finish |

| | |
|------------------|---|
| NT-2304B | 8' Two-Circuit Track, Black finish (96-1/4") |
| NT-2304BA | 8' Two-Circuit Track, Black finish (92-3/8") |
| NT-2304S | 8' Two-Circuit Track, Silver finish (96-1/4") |
| NT-2304W | 8' Two-Circuit Track, White finish (96-1/4") |
| NT-2304WA | 8' Two-Circuit Track, White finish (92-3/8") |

RECESSED TRACK



| ITEM # | DESCRIPTION |
|----------------|--|
| NTRT-4 | 4' Recessed Track Housing |
| NTRT-8 | 8' Recessed Track Housing |
| | • Finish: Black or White |
| | • Compatible 4' Track: NT-302; NT-2302 |
| | • Compatible 8' Track: NT-304A; NT-2304A |
| NTRT-18 | Dead Feed for Recessed Track Housing |
| | • Finish: Black or White |
| | • Compatible Fixtures: NT-318; NT-2318 |

TRACK FEEDS



TITLE 24 COMPLIANT

| ITEM # | DESCRIPTION |
|------------------|--|
| NT-348/A | One-Circuit End Feed Current Limiter |
| NT-2348/A | Two-Circuit End Feed Current Limiter |
| | • Amperage: 0.5A / 60W to 14A / 1680W (must specify) |
| | • Finish: Black, Silver or White |



TITLE 24 COMPLIANT

| | |
|------------------|--|
| NT-358/A | One-Circuit In-Line Feed Current Limiter |
| NT-2358/A | Two-Circuit In-Line Feed Current Limiter |
| | • Amperage: 0.5A / 60W to 14A / 1680W (must specify) |
| | • Finish: Black or White |



| | |
|----------------|---------------------------------------|
| NT-311 | One-Circuit Live End Feed with Canopy |
| NT-2311 | Two-Circuit Live End Feed with Canopy |
| | • Finish: Black, Silver or White |



| | |
|------------------|---|
| NT-316 | One-Circuit Live End Feed, Right Polarity |
| NT-316/L | One-Circuit Live End Feed, Left Polarity |
| NT-2316 | Two-Circuit Live End Feed, Right Polarity |
| NT-2316/L | Two-Circuit Live End Feed, Left Polarity |
| | • Finish: Black, Bronze, Silver or White |



| | |
|---------------|---|
| NT-321 | One Circuit Live End Feed w/Cord & Plug, Right Polarity |
| | • Finish: Black, Silver or White |



| | |
|----------------|----------------------------------|
| NT-307 | One-Circuit Floating Canopy Feed |
| NT-2307 | Two-Circuit Floating Canopy Feed |
| | • Finish: Black, Silver or White |



| | |
|----------------|---|
| NT-352 | One-Circuit Live End Feed with Canopy, Right Polarity |
| NT-2352 | Two-Circuit Live End Feed with Canopy |
| | • Finish: Black, Bronze, Silver or White |



| | |
|------------------|--|
| NT-328 | One-Circuit Live End Conduit Connector, Right Polarity |
| NT-328/L | One-Circuit Live End Conduit Connector, Left Polarity |
| NT-2328 | Two-Circuit Live End Conduit Connector, Right Polarity |
| NT-2328/L | Two-Circuit Live End Conduit Connector, Left Polarity |
| | • Finish: Black, Silver or White |



| | |
|----------------|----------------------------------|
| NT-348 | One-Circuit T-Bar End Feed |
| NT-2348 | Two-Circuit T-Bar End Feed |
| | • Finish: Black, Silver or White |

RECESSED TRACK ACCESSORIES

| ITEM # | DESCRIPTION |
|----------------|---|
| NTRT-16 | End Feed for Recessed Track Housing |
| | • Finish: Black or White |
| | • Compatible Fixtures: NT-316; NT-2316 |
| NTRT-10 | Straight Connector for Recessed Track Housing |
| | • Finish: Black or White |
| | • Compatible Fixtures: NT-312; NT-2312 |
| NTRT-13 | L-Connector for Recessed Track Housing |
| | • Finish: Black or White |
| | • Compatible Fixtures: NT-313; NT-2313 |
| NTRT-14 | T-Connector for Recessed Track Housing |
| | • Finish: Black or White |
| | • Compatible Fixtures: NT-314; NT-2314 |
| NTRT-15 | X-Connector for Recessed Track Housing |
| | • Finish: Black or White |
| | • Compatible Fixtures: NT-315; NT-2315 |



Track System Components

TRACK CONNECTORS

| ITEM # | DESCRIPTION |
|-----------------|--|
| NT-310B | One-Circuit Straight Connector, Black |
| NT-310BZ | One-Circuit Straight Connector, Bronze |
| NT-310S | One-Circuit Straight Connector, Silver |
| NT-310W | One-Circuit Straight Connector, White |
| NT-2310B | Two-Circuit Straight Connector, Black |
| NT-2310S | Two-Circuit Straight Connector, Silver |
| NT-2310W | Two-Circuit Straight Connector, White |



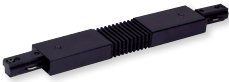
| | |
|----------------|---------------------------------|
| NT-312B | One-Circuit I-Connector, Black |
| NT-312S | One-Circuit I-Connector, Silver |
| NT-312W | One-Circuit I-Connector, White |
| NT-2312 | Two-Circuit I-Connector, Black |
| NT-312S | Two-Circuit I-Connector, Silver |
| NT-312W | Two-Circuit I-Connector, White |

• Includes L-Connector cover, can be converted in the field
• Can be used as power feed



| | |
|----------------|--|
| NT-309B | One Circuit Flexible Connector, Black |
| NT-309S | One Circuit Flexible Connector, Silver |
| NT-309W | One Circuit Flexible Connector, White |

• Can be used as power feed



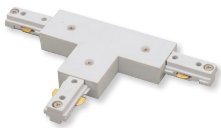
| | |
|-----------------|---------------------------------|
| NT-313B | One-Circuit L-Connector, Black |
| NT-313BZ | One-Circuit L-Connector, Bronze |
| NT-313S | One-Circuit L-Connector, Silver |
| NT-313W | One-Circuit L-Connector, White |
| NT-2313B | Two-Circuit L-Connector, Black |
| NT-2313S | Two-Circuit L-Connector, Silver |
| NT-2313W | Two-Circuit L-Connector, White |

• Can be used as power feed



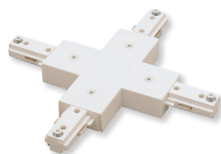
| | |
|-------------------|---|
| NT-314B | 1-Circuit T-Connector, Black, Right Polarity |
| NT-314S | 1-Circuit T-Connector, Silver, Right Polarity |
| NT-314W | 1-Circuit T-Connector, White, Right Polarity |
| NT-314B/L | 1-Circuit T-Connector, Black, Left Polarity |
| NT-314S/L | 1-Circuit T-Connector, Silver, Left Polarity |
| NT-314W/L | 1-Circuit T-Connector, White, Left Polarity |
| NT-2314B | 2-Circuit T-Connector, Black, Right Polarity |
| NT-2314S | 2-Circuit T-Connector, Silver, Right Polarity |
| NT-2314W | 2-Circuit T-Connector, White, Right Polarity |
| NT-2314B/L | 2-Circuit T-Connector, Black, Left Polarity |
| NT-2314S/L | 2-Circuit T-Connector, Silver, Left Polarity |
| NT-2314W/L | 2-Circuit T-Connector, White, Left Polarity |

• Can be used as power feed



| | |
|-------------------|---|
| NT-315B | 1-Circuit X-Connector, Black, Right Polarity |
| NT-315S | 1-Circuit X-Connector, Silver, Right Polarity |
| NT-315W | 1-Circuit X-Connector, White, Right Polarity |
| NT-315B/L | 1-Circuit X-Connector, Black, Left Polarity |
| NT-315S/L | 1-Circuit X-Connector, Silver, Left Polarity |
| NT-315W/L | 1-Circuit X-Connector, White, Left Polarity |
| NT-2315B | 2-Circuit X-Connector, Black, Right Polarity |
| NT-2315S | 2-Circuit X-Connector, Silver, Right Polarity |
| NT-2315W | 2-Circuit X-Connector, White, Right Polarity |
| NT-2315B/L | 2-Circuit X-Connector, Black, Left Polarity |
| NT-2315S/L | 2-Circuit X-Connector, Silver, Left Polarity |
| NT-2315W/L | 2-Circuit X-Connector, White, Left Polarity |

• Can be used as power feed



TRACK COMPONENTS

| ITEM # | PRICE | DESCRIPTION |
|-----------------|-------|--|
| NT-318 | | One-Circuit Dead End Cap |
| NT-2318R | | Two-Circuit Dead End Cap, Right Polarity |
| NT-2318L | | Two-Circuit Dead End Cap, Left Polarity |

• Finish: Black, Bronze, Silver or White



| | | |
|---------------|--|------------------|
| NT-320 | | Outlet Box Cover |
|---------------|--|------------------|

• Finish: Black, Bronze, Silver or White



| | | |
|---------------|--|-----------------------------|
| NT-308 | | Utility Hook (up to 30lbs.) |
|---------------|--|-----------------------------|

• Finish: Black, Silver or White
• Adapter: H-Style, J-Style or L-Style



| | | |
|---------------|--|----------------|
| NT-327 | | Outlet Adapter |
|---------------|--|----------------|

• Finish: Black, Silver or White
• Adapter: H-Style, J-Style or L-Style



| | | |
|---------------|--|--------------------------------------|
| NT-368 | | Track Pendant Adapter (2" extension) |
|---------------|--|--------------------------------------|

• Finish: Black, Silver or White
• Adapter: H-Style, J-Style or L-Style



TRACK MOUNTING ACCESSORIES

| ITEM # | DESCRIPTION |
|---------------|---------------------------------|
| NT-305 | 18" Pendant Assembly Kit, White |
| NT-306 | 24" Pendant Assembly Kit, White |
| NT-336 | 36" Pendant Assembly Kit, White |
| NT-336 | 48" Pendant Assembly Kit, White |

• Finish: Black, Silver or White



| | |
|-------------------|----------------------|
| NRA-132/18 | 18" Replacement Stem |
| NRA-132/24 | 24" Replacement Stem |
| NRA-132/48 | 48" Replacement Stem |
| NRA-132/72 | 72" Replacement Stem |
| NRA-82 | Stem Coupler |

• Finish: Black, Silver or White



| | | |
|---------------|--|----------------|
| NT-326 | | Wire Way Cover |
|---------------|--|----------------|

• Finish: Black, Silver or White



| | | |
|---------------|--|-----------------------|
| NT-349 | | Slope Pendant Adapter |
|---------------|--|-----------------------|

• Finish: Black, Silver or White



| | | |
|------------------|--|-----------------------------------|
| NT-355/8 | | 8' Aircraft Cable Suspension Kit |
| NT-355/20 | | 20' Aircraft Cable Suspension Kit |



| | | |
|---------------|--|--------------------------------|
| NT-332 | | T-Bar Attachment Clip (15/16") |
|---------------|--|--------------------------------|





NORA LIGHTING, INC.
6505 Gayhart St.
Commerce, CA 90040
TEL 323.767.2600
FAX 323.722.3677
www.NoraLighting.com

DOMESTIC FACILITIES:
Atlanta, GA
Cincinnati, OH
Dallas, TX
Denver, CO
Detroit, MI
Los Angeles, CA
Louisville, KY
Nashville, TN
New York, NY

INTERNATIONAL SALES:
6505 Gayhart St.
Commerce, CA 90040
TEL 323.767.2600
FAX 323.722.3677

The products shown in this catalog are covered by USA and International patents. Specifications subject to change without notice.